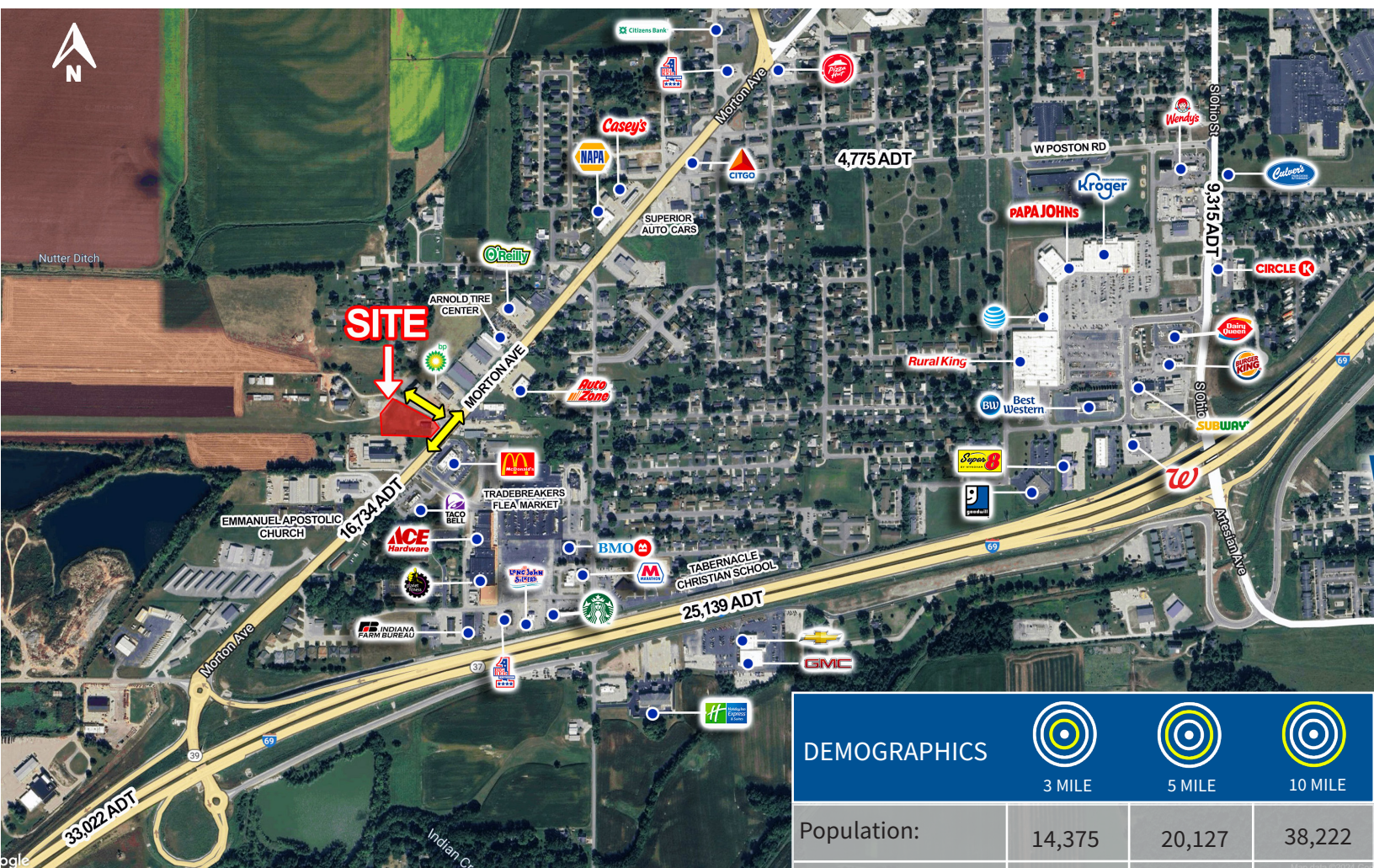


0.98 Acre Parcel Available for Sale, BTS, Ground Lease

PRIME INTERSTATE PAD SITE (I-69 & Morton Ave Exit)

VERITAS
REALTY

1200 Morton Ave., Martinsville, IN 46151



PROPERTY HIGHLIGHTS:

- Premier interstate pad site opportunity for ground lease, build to suit, or sale
- Highly visible & easily accessible 0.98 acre parcel located along Morton Ave. at the newly created I-69 Exit
- Ideal for drive-thru restaurants, QSR's, or free-standing retail/medical
- New McDonald's, Taco Bell, and BP relocated to this intersection
- 16,734 VPD along Morton Ave. and 33,022 VPD along I-69



CONTACT:

Shannon Hunt T: 317-472-1800 E: Shannon@VeritasRealty.com	Kyle Hughes T: 317-472-1800 E: Khughes@VeritasRealty.com	Jamison Downs T: 317-472-1800 E: Jamison@VeritasRealty.com
------------------------------------------------------------------------	-----------------------------------------------------------------------	-------------------------------------------------------------------------

www.VeritasRealty.com

0.98 Acre Parcel Available for Sale, BTS, Ground Lease | Martinsville, IN

PRIME INTERSTATE PAD SITE (I-69 & Morton Ave Exit)

MARKET
AERIAL

1200 Morton Ave., Martinsville, IN 46151



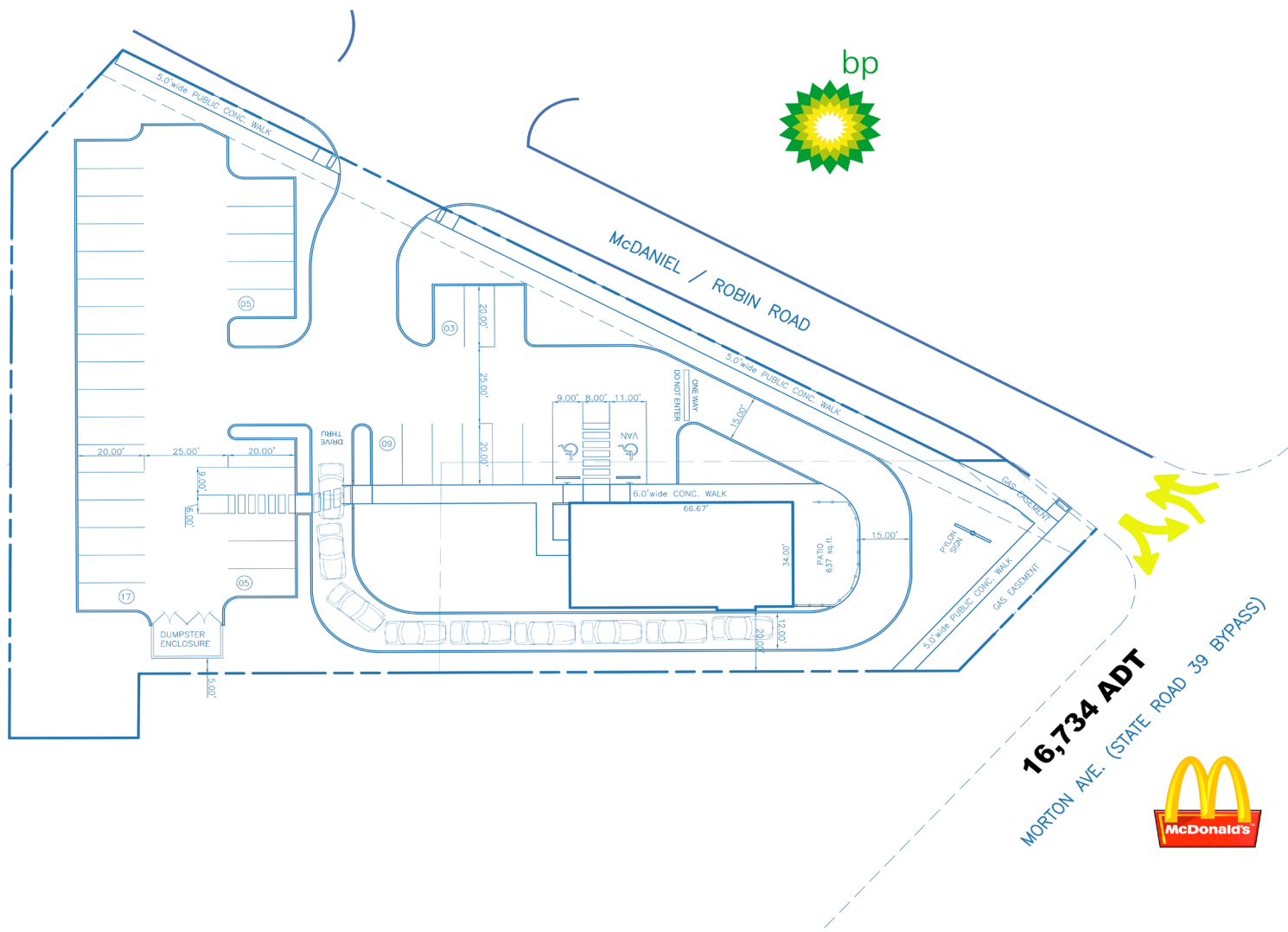
0.98 Acre Parcel Available for Sale, BTS, Ground Lease | Martinsville, IN
PRIME INTERSTATE PAD SITE (I-69 & Morton Ave Exit)

PROPOSED
SITE
PLAN

1200 Morton Ave., Martinsville, IN 46151



**Conceptual Site Plan:
SINGLE TENANT (drive-thru, patio, 39 parking spaces)**



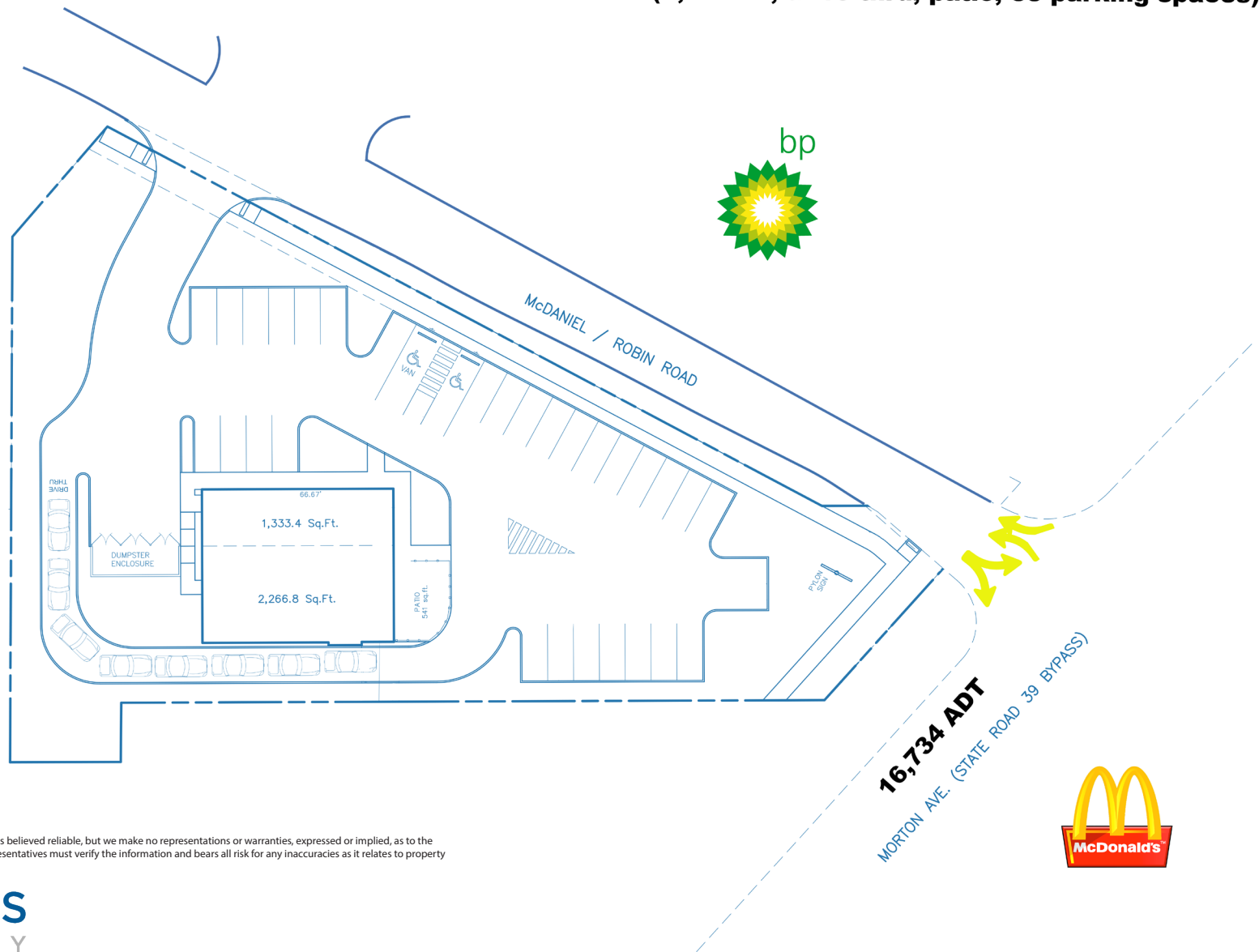
0.98 Acre Parcel Available for Sale, BTS, Ground Lease | Martinsville, IN
PRIME INTERSTATE PAD SITE (I-69 & Morton Ave Exit)

PROPOSED
SITE
PLAN

1200 Morton Ave., Martinsville, IN 46151



Conceptual Site Plan:
MULTI - TENANT (3,600 SF, drive-thru, patio, 33 parking spaces)



Information within this brochure has been obtained from sources believed reliable, but we make no representations or warranties, expressed or implied, as to the accuracy of the information. Prospective tenant and tenant representatives must verify the information and bears all risk for any inaccuracies as it relates to property and market information.

