

Broad Ripple | 2nd Floor Office Space

For Lease | Available July 2024

VERITAS
REALTY

PROPERTY HIGHLIGHTS:

- 2,277 SF 2nd Floor Office Space for Lease
- 6 offices with open layout & elevator access
- Move-in ready office space with modern design, custom finishes and private restroom with shower
- Located in the heart of Broad Ripple
- 23 Minutes from Monument Circle & 17 Minutes from Carmel City Center
- Minutes from Indy's best coffee shops, restaurants, boutiques, The Vogue music venue, Fresh Thyme & the Monon Trail
- 1-2 reserved off street parking spaces available
- Available mid to late Summer 2024

DEMOGRAPHICS	1 MILE	3 MILE
POPULATION	11,361	81,426
HOUSEHOLDS	5,785	35,803
AVERAGE HOUSEHOLD INCOME	\$128,449	\$103,00
MEDIAN AGE	36.7	37.9



815 E 65th Street, Indianapolis, IN 46220

Downtown
Indianapolis

FOR LEASE

CONTACT:

John Holloway
317-472-1800
John@VeritasRealty.com

www.VeritasRealty.com

Broad Ripple Office Space

For Lease | Available July 2024

SITE
PHOTOS



CONTACT: John Holloway
317-472-1800
John@VeritasRealty.com

FOR LEASE

www.VeritasRealty.com

Broad Ripple Office Space

For Lease | Available July 2024

INTERIOR
PHOTOS



CONTACT:

John Holloway
317-472-1800
John@VeritasRealty.com

FOR LEASE

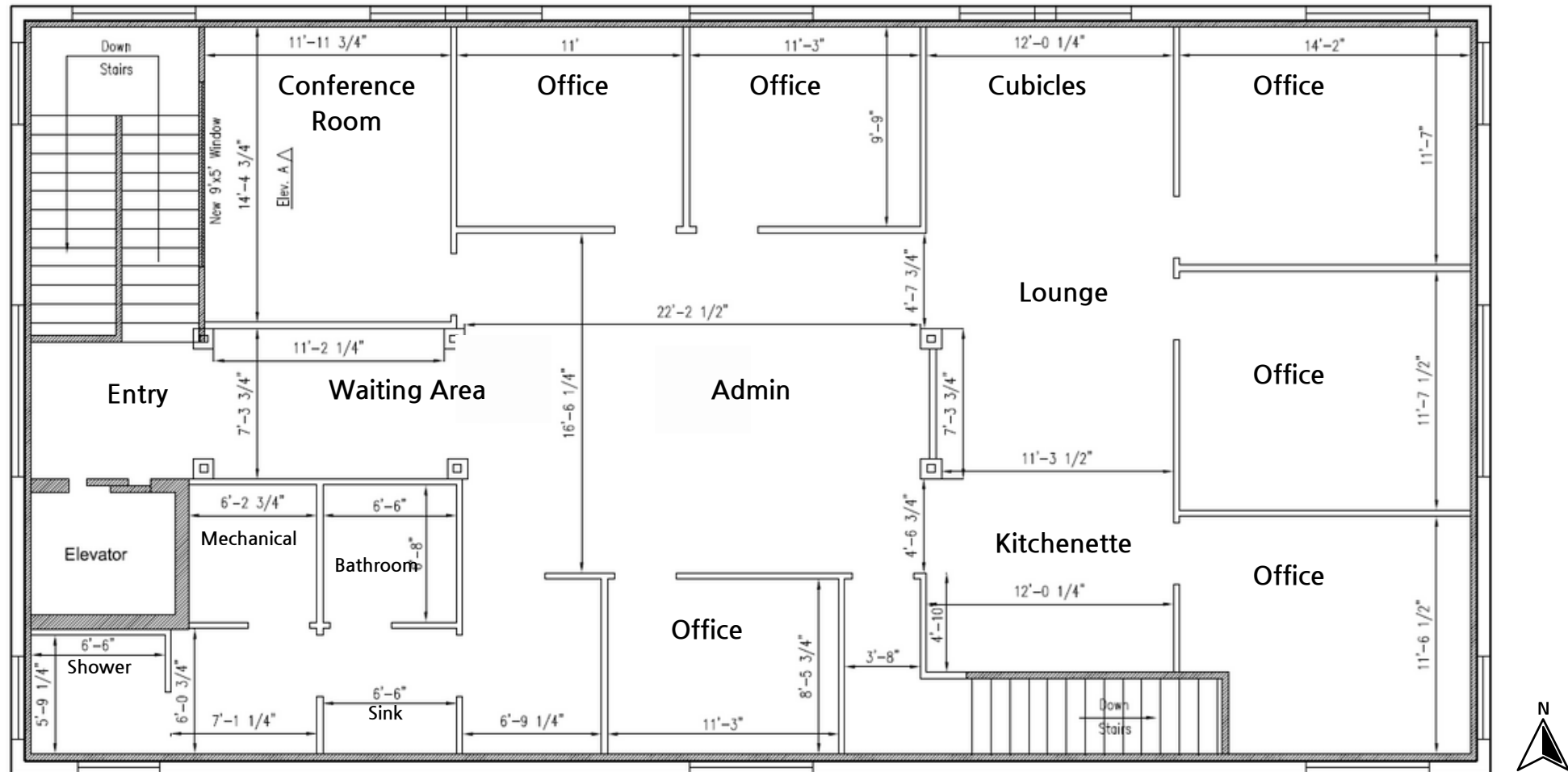
www.VeritasRealty.com

Broad Ripple Office Space

For Lease | Available July 2024

Floor
Plan

65th Street



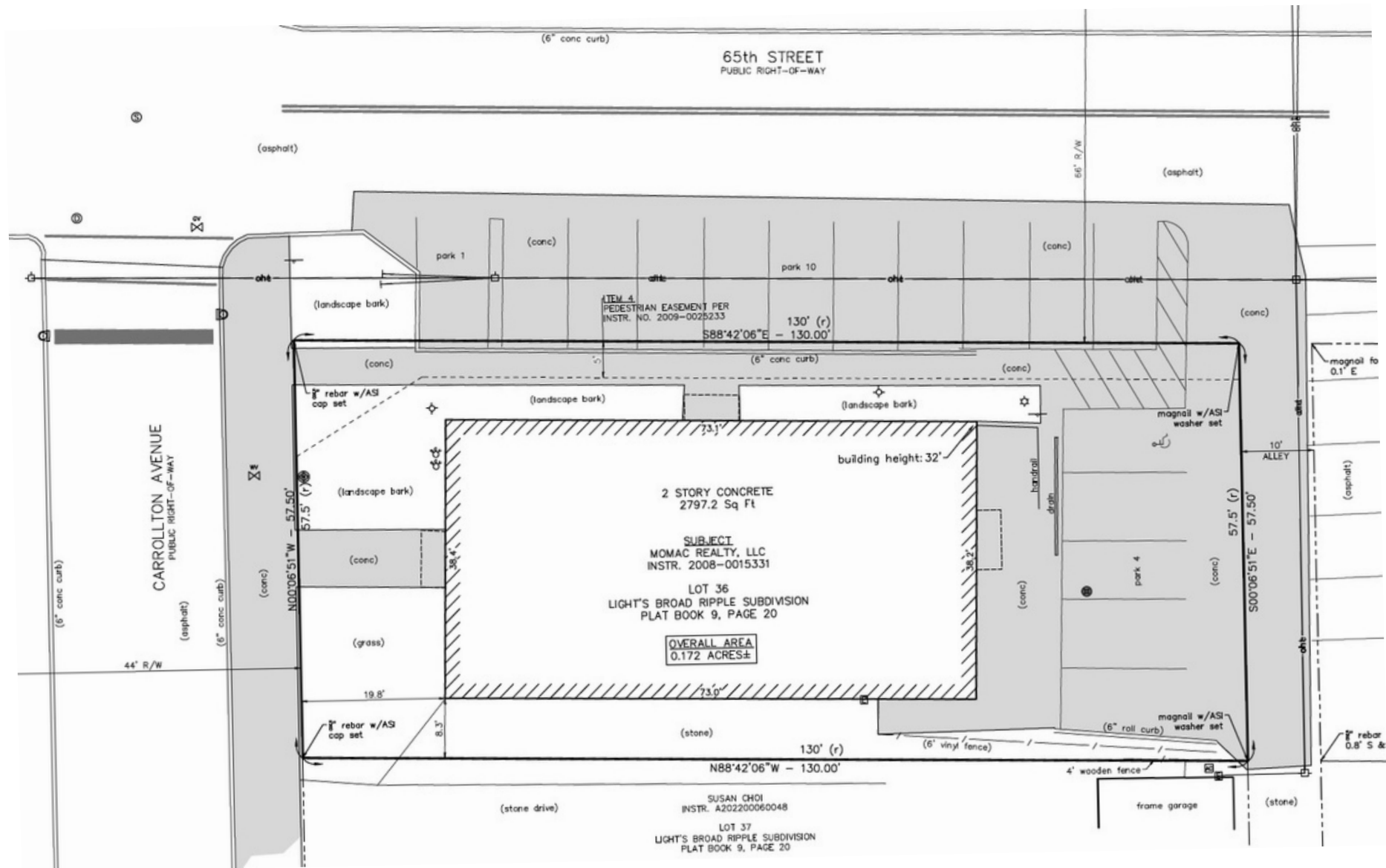
CONTACT:
John Holloway
317-472-1800
John@VeritasRealty.com

FOR LEASE

www.VeritasRealty.com

Broad Ripple Office Space For Lease | Available July 2024

Site Plan



CONTACT:
John Holloway
317-472-1800
John@VeritasRealty.com

FOR LEASE

www.VeritasRealty.com

Broad Ripple Office Space

For Lease | Available July 2024

Market
Aerial



CONTACT: John Holloway | John@VeritasRealty.com | 317.472.1800

FOR LEASE
www.VeritasRealty.com