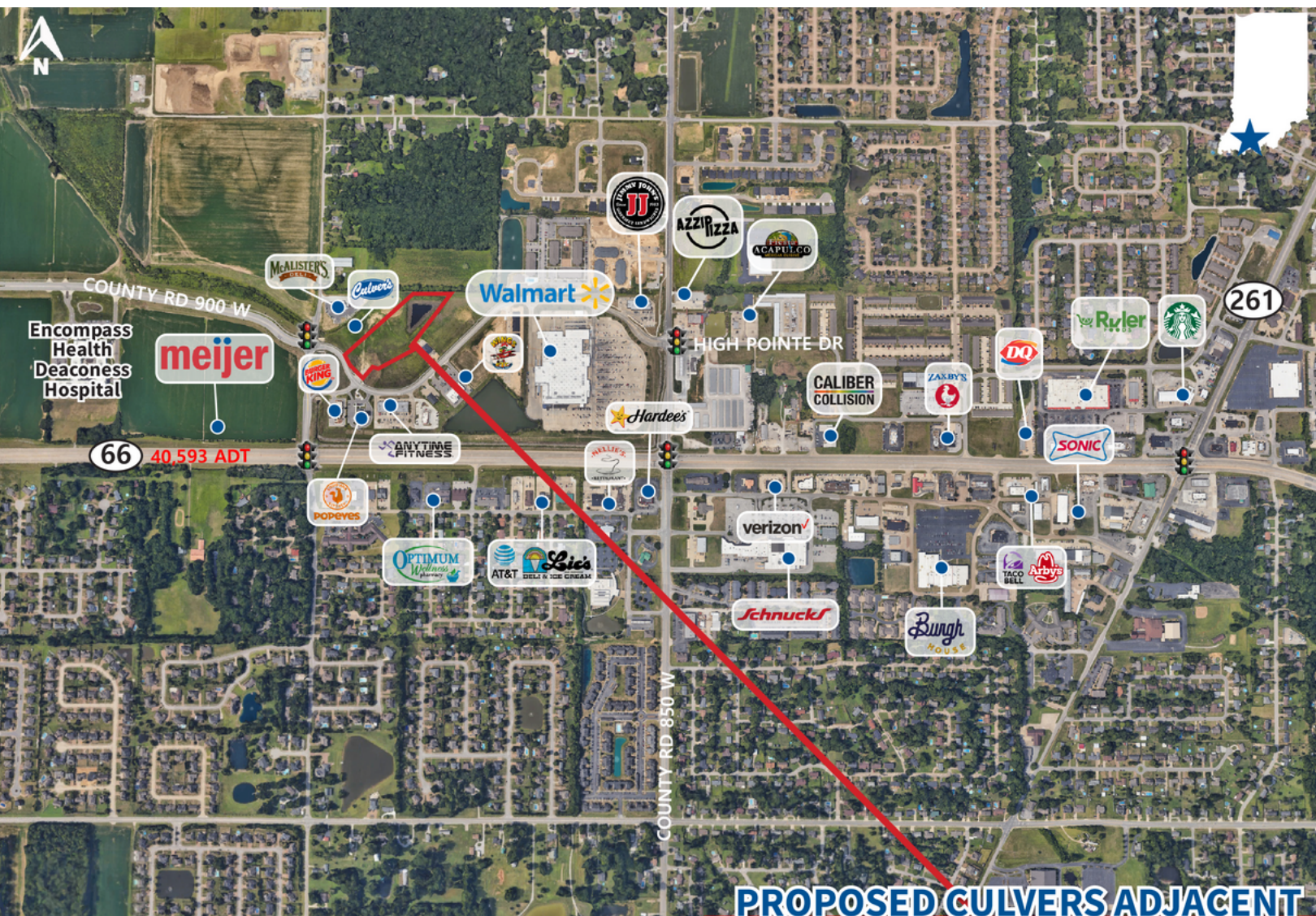


PARCEL AVAILABLE ADJACENT TO NEW CULVER'S

VERITAS
REALTY

2-5.12 ACRES | FOR SALE, GROUND LEASE OR BUILD TO SUIT

8950 High Pointe Drive, Newburgh, IN 47630



PROPERTY HIGHLIGHTS

- Opportunity to purchase land in the high income suburb of Newburgh, IN within the Evansville, IN MSA
- 2.00-5.12 AC parcel available for Sale, Ground Lease or BTS
- Shadow anchored by Walmart, Deaconess Hospital and a future Meijer
- Join McAlister's Deli, proposed Culver's, Burger King, Penn Station, Popeyes and more
- Access to over 40,000 cars per day along State Road 66



CONTACT: John Holloway
T: 317-472-1800
E: John@VeritasRealty.com

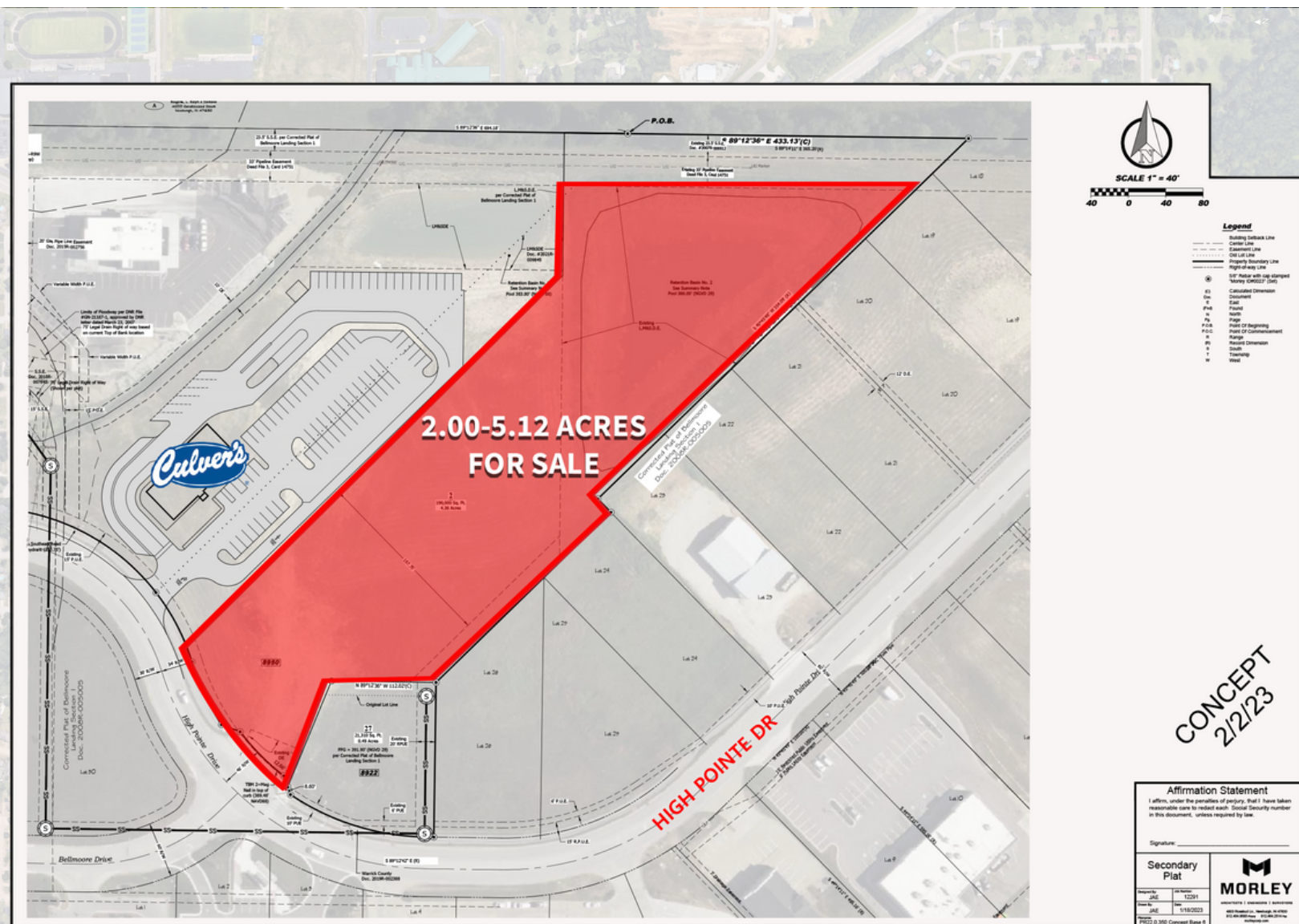
Shannon Hunt
T: 317-737-2060
E: Shannon@VeritasRealty.com

FOR SALE
www.VeritasRealty.com

PARCEL AVAILABLE ADJACENT TO NEW CULVER'S

2- 5.12 ACRES | FOR SALE, GROUND LEASE OR BUILD TO SUIT

SITE PLAN



DEMOGRAPHICS	3 MILE	5 MILE	10 MILE
POPULATION	39,916	70,124	192,558
HOUSEHOLDS	15,473	29,714	80,560
AVERAGE HOUSEHOLD INCOME	\$121,577	\$99,532	\$83,926

CONTACT: John Holloway
T: 317-472-1800
E: John@VeritasRealty.com

Shannon Hunt
T: 317-737-2060
E: Shannon@VeritasRealty.com

VERITAS
REALTY

PARCEL AVAILABLE ADJACENT TO NEW CULVER'S

2-5.12 ACRES | FOR SALE, GROUND LEASE OR BUILD TO SUIT

Evansville, IN
MSA



CONTACT: John Holloway
T: 317-472-1800
E: John@VeritasRealty.com

Shannon Hunt
T: 317-737-2060
E: Shannon@VeritasRealty.com

