

WASHINGTON SQUARE OUTLOTS

FREESTANDING OPPORTUNITY AVAILABLE

PROPERTY
OVERVIEW

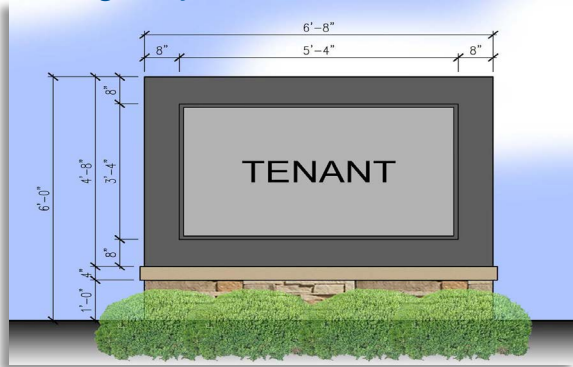
PROPERTY HIGHLIGHTS:

- Up to 3,000 SF endcap available for lease in nw retail development on E. Washington Street with WellNow Urgent Care and Cousins Subs
- Positioned at signalized entrance of Washington Square Mall anchored by Target and AMC Theater
- Regional retail corridor anchored by Walmart Supercenter, Meijer, Kroger, Ross Dress for Less, Marshall's, Hobby Lobby, Chick-Fil-A, Aspen Dental, Starbucks, Culver's and More
- High traffic counts on E. Washington Street (+/-33,929 VPD) and Mitthoefer Road (+/- 12,585 VPD)
- Estimated ground breaking July 2023



MONUMENT SIGN

Serving every individual lot



SITE 1
4,250 SF
wellnow URGENT CARE
0.642 AC Lot

SITE 2
+/- 3,000 SF
Endcap Available
COUSINS SUBS
2,400 SF with Drive-thru
0.700 Acres

SITE 3
4,185 SF PENDING
Freestanding Bank
0.582 AC Lot