

JASPER CROSSING

1,640 - 4,927 SF AVAILABLE | JOIN



FOR LEASE

JASPER CROSSING



PROPOSED
BIG BOX
ANCHOR

PENDING
BANK



N NEWTON ST 19,745 ADT

W 36th St
4,671 ADT



FULL BUILDING RENOVATIONS
TO BE COMPLETED IN 2022

4276-4292 N. Newton Street, Jasper, IN

CONTACT: Seth Biggerstaff

E: Seth@VeritasRealty.com

T: 317-472-1800

Jamison Downs

E: Jamison@VeritasRealty.com

T: 317-472-1800

VERITAS
REALTY

www.VeritasRealty.com



RETAIL SPACE AVAILABLE | FOR LEASE

JASPER CROSSING

PROPERTY OVERVIEW

RETAIL SPACE AVAILABLE:

1,640 SF - 4,927 SF | Divisible

Prominent, bumped-out inline space


CENTER OVERVIEW:


Full building renovations underway to be complete in 2022


PROPERTY HIGHLIGHTS:

- Join  &  in highly visible outlot shops in front of The Home Depot and Walmart Supercenter
- Full accessibility to center from Newton St. & additional shared access with Walmart at lighted intersection
- Large Pylon available along Newton St.
- Jasper is the county seat of Dubois County; a regional economic hub
- Fast growing market gaining more national retailers: Zaxby's, McAlister's, Culvers & Starbucks (all coming soon)
- Large area employers include: Memorial Hospital (1,700 employees), Kimball International & Electronics (combined 3,775 employees), Masterbrand Cabinets (2,045 employees) & many more.



 Jasper's a regional economic hub with 41% of workforce commuting in daily from 8 surrounding counties

 Over 18,550 Employees within 3 miles of site

 2.5% unemployment rate - among the lowest rates in the state

NEARBY RETAILERS:



DEMOGRAPHICS



3 MILE



5 MILE



10 MILE

Population:	16,140	20,122	35,906
Total Employees:	18,555	19,036	26,956
Daytime Pop:	23,206	24,539	36,532
Avg. HH Income:	\$87,274	\$88,580	\$83,470

JASPER CROSSING

SUITE	TENANT	SF
4276	Sun Tan City	2,613
4278	AVAILABLE	1,640 - 4,927
4292	Starbucks (drive-thru)	2,587
Total GLA		10,127



PYLON



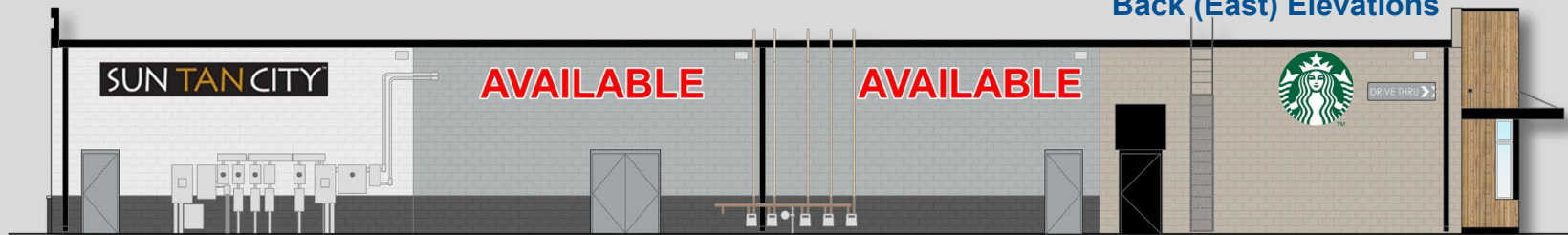
RETAIL SPACE AVAILABLE | FOR LEASE
JASPER CROSSING

ELEVATIONS

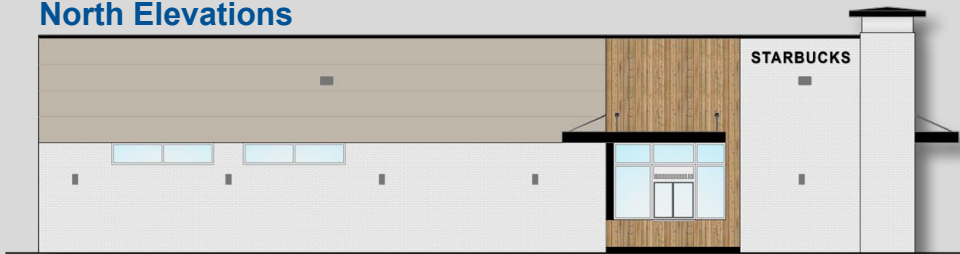
Front (West) Elevations



Back (East) Elevations



North Elevations



South Elevations

