

MARTINSVILLE SHOPPES

1,233-2,488 SF ENDCAP AVAILABLE | DRIVE-THRU POTENTIAL

VERITAS
REALTY

JOIN

ATHLETICO 
PHYSICAL THERAPY




NEWLY RENOVATED
2021

640 Birk Road, Martinsville, IN 46151



PROPERTY HIGHLIGHTS:

- 1,233 to 2,488 SF Endcap with potential drive-thru opportunity
- Walmart anchored outlot shops with new ownership and complete renovations completed in 2021
- Interstate pylon sign with available panel(s)
- Billboard visibility to I-69 (32,316 cars per day), access to two different I-69 interchanges
- Across from Martinsville High School (1,487 students) & IU Health Morgan (265 employees)
- Martinsville is the county seat of Morgan County (population 70,116), which is situated between Indianapolis & Bloomington, IN

DEMOGRAPHICS	 3 MILE	 5 MILE	 10 MILE
Population:	14,584	21,225	40,694
Households:	5,856	8,430	15,808
Daytime Pop:	11,095	13,872	22,260
Avg. HH Income:	\$61,612	\$69,352	\$79,924

CONTACT:

Seth Biggerstaff

T: 317-472-1800

E: Seth@VeritasRealty.com

Jamison Downs

T: 317-472-1800

E: Jamison@VeritasRealty.com

FOR
LEASE

www.VeritasRealty.com

MARTINSVILLE SHOPPES

1,233-2,488 SF ENDCAP AVAILABLE | DRIVE-THRU POTENTIAL

AERIAL
SITE



MARTINSVILLE SHOPPES

1,233-2,488 SF ENDCAP AVAILABLE | DRIVE-THRU POTENTIAL

SITE
PLAN

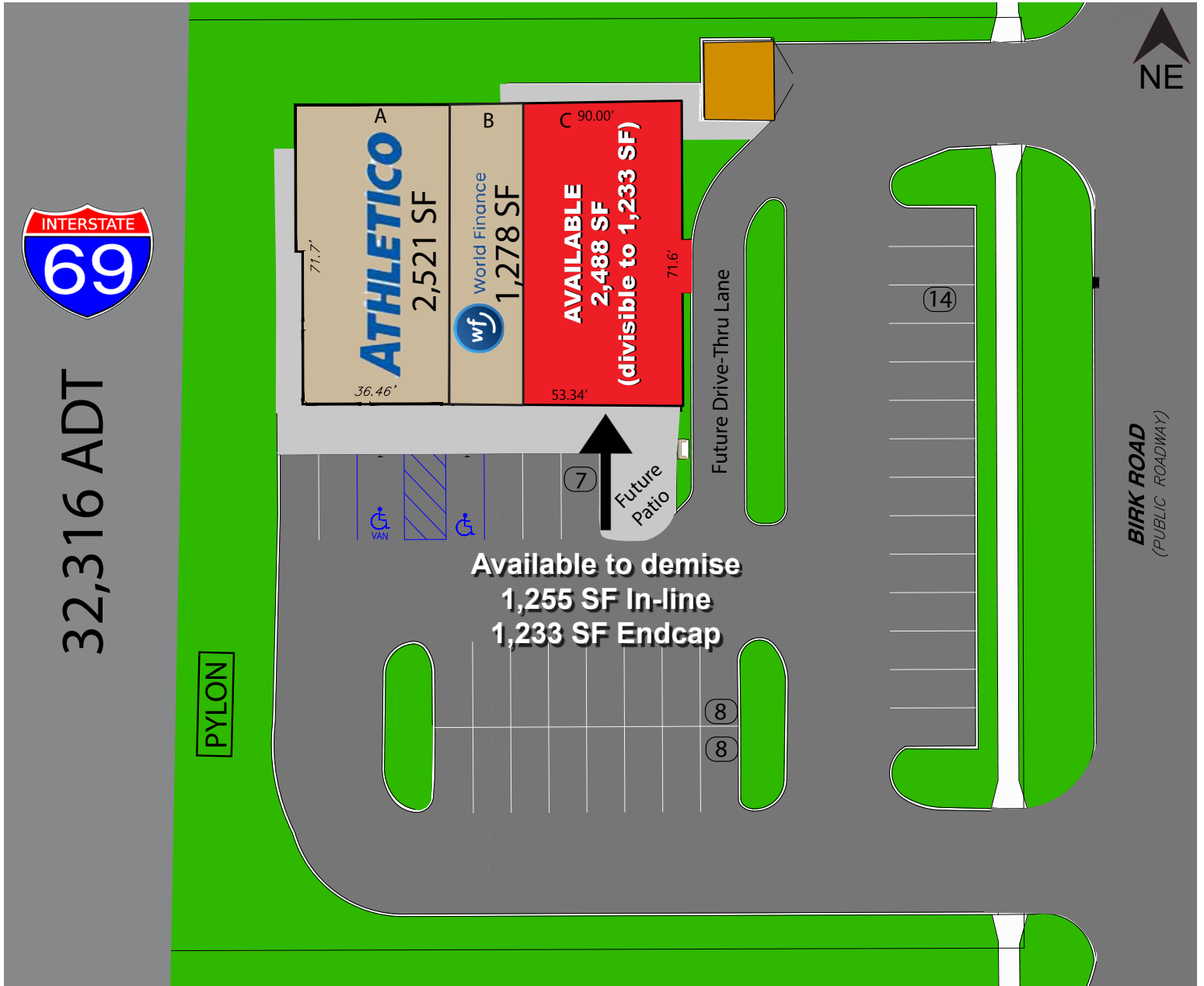


MARTINSVILLE SHOPPES

1,233-2,488 SF ENDCAP AVAILABLE | DRIVE-THRU POTENTIAL

SITE
PLAN

Conceptual Site Plan with Drive-Thru



MARTINSVILLE SHOPPES

1,233-2,488 SF ENDCAP AVAILABLE | DRIVE-THRU POTENTIAL

CENTER
PHOTOS



2,488 SF
Combined

1,233 SF

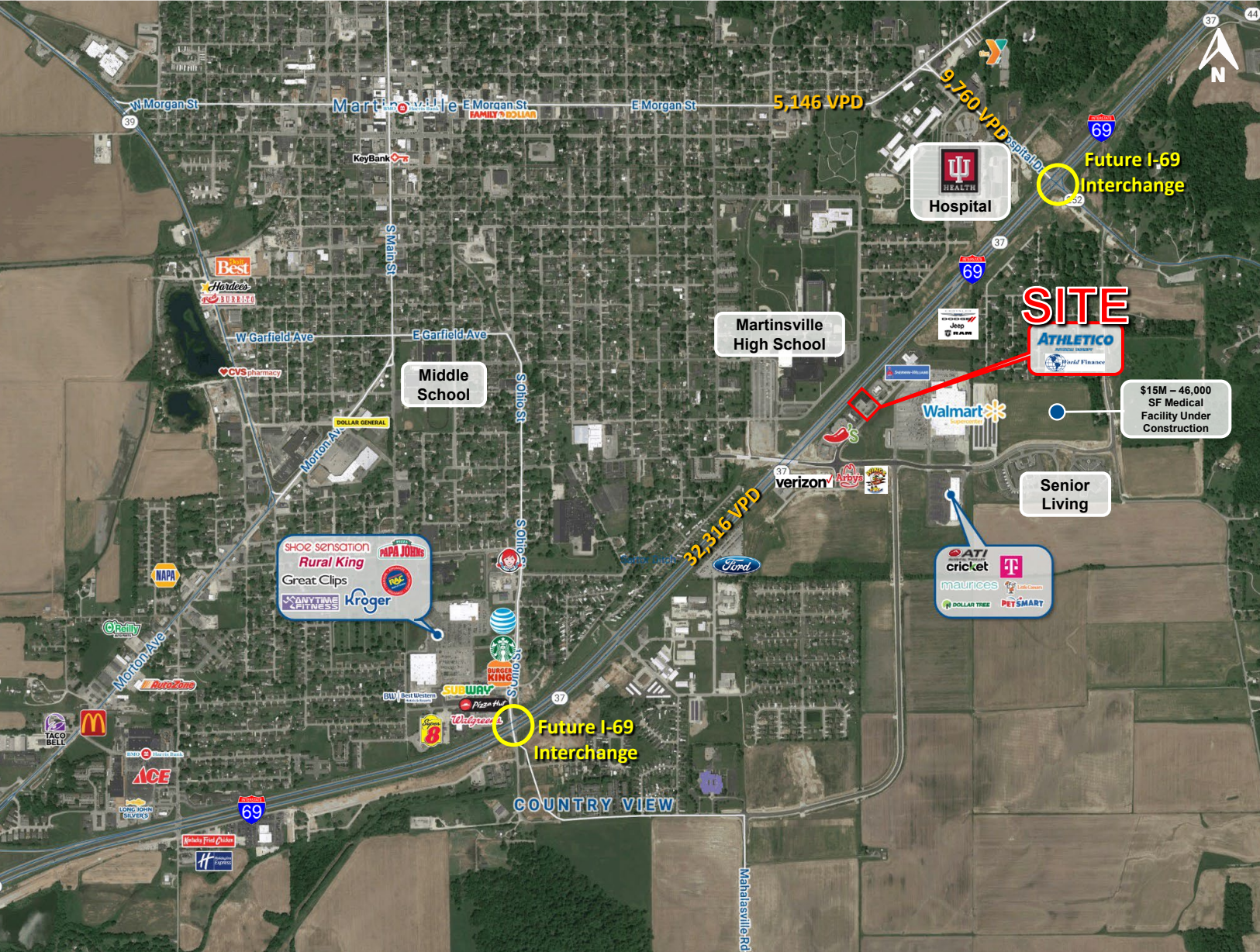


MARTINSVILLE SHOPPES

1,233-2,488 SF ENDCAP AVAILABLE | DRIVE-THRU POTENTIAL

MARKET
AERIAL

640 Birk Road, Martinsville, IN 46151



Information within this brochure has been obtained from sources believed reliable, but we make no representations or warranties, expressed or implied, as to the accuracy of the information. Prospective tenant and tenant representatives must verify the information and bears all risk for any inaccuracies as it relates to property and market information.

CHAINLINKS
RETAIL ADVISORS

CONTACT:

Seth Biggerstaff

T: 317-472-1800

E: Seth@VeritasRealty.com

Jamison Downs

T: 317-472-1800

E: Jamison@VeritasRealty.com

VERITAS
REALTY

www.VeritasRealty.com