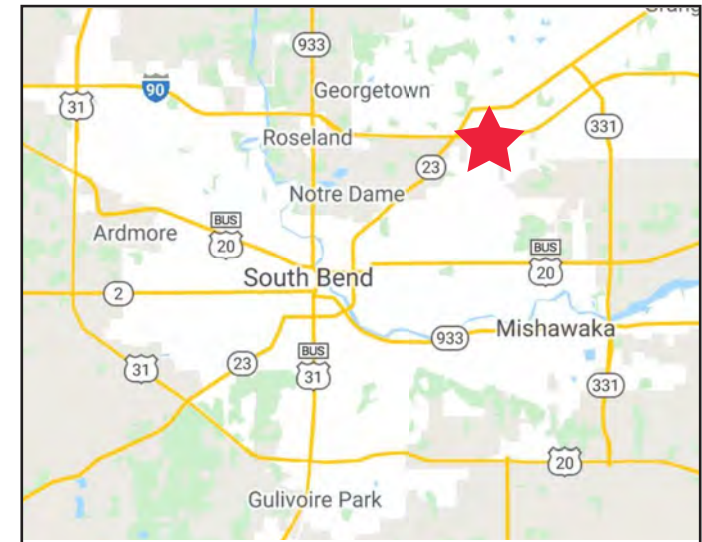


New Construction Small Shops & Retail Parcel for Ground Lease or Build-to-suit 2,800 SF Endcap and 1.73 Acre Parcel

5320 N. Main Street, Mishawaka, IN 46545



DEMOGRAPHICS	1 miles	3 miles	5 miles
Population	6,007	57,779	153,638
Median HH Income	\$43,903	\$54,156	\$57,345
Avg. HH Income	\$63,366	\$79,651	\$80,890
Employees	17,199	50,567	101,817

Property Highlights:

- Join recently opened Raising Cane's and Mission BBQ in newly completed retail shops on Main Street in Mishawaka
- 2,800 SF Endcap Available (Can be divided)
- 1.73 Acre parcel available for ground lease or build-to-suit.
- Prime visibility and full access from Main Street, the highest trafficked corridor in Mishawaka with 28,943 VPD
- Monument signage available
- Located in the heart of Mishawaka's regional retail corridor anchored by Costco, Meijer, Whole Foods, The Home Depot, Lowe's, Dick's Sporting Goods, Fresh Thyme, University Park Mall and many more
- Adjacent to St. Joseph Regional Medical Center Hospital with +/- 1,630 employees and +/- 294 beds
- Drone Video: [Click Here](#)

FOR MORE INFORMATION
PLEASE CONTACT:

Shannon Hunt
T: 317-472-1800

E: Shannon@VeritasRealty.com

Amy Tharp

T: 317-472-1800

E: Amy@VeritasRealty.com



Developed by:



New Construction Small Shops & Retail Parcel for Ground Lease or Build-to-suit

2,800 SF Endcap and 1.73 Acre Parcel

5320 N. Main Street, Mishawaka, IN 46545



FOR MORE INFORMATION
PLEASE CONTACT:

Shannon Hunt
T: 317-472-1800
E: Shannon@VeritasRealty.com

Amy Tharp
T: 317-472-1800
E: Amy@VeritasRealty.com

VR VERITAS
REALTY
A MEMBER OF
CHAINLINKS
RETAIL ADVISORS

Developed by:
ACCESS

New Construction Small Shops & Retail Parcel for Ground Lease or Build-to-suit 2,800 SF Endcap and 1.73 Acre Parcel

5320 N. Main Street, Mishawaka, IN 46545



FOR MORE INFORMATION
PLEASE CONTACT:

Shannon Hunt
T: 317-472-1800
E: Shannon@VeritasRealty.com

Amy Tharp
T: 317-472-1800
E: Amy@VeritasRealty.com



New Construction Small Shops & Retail Parcel for Ground Lease or Build-to-suit

2,800 SF Endcap and 1.73 Acre Parcel

5320 N. Main Street, Mishawaka, IN 46545



FOR MORE INFORMATION
PLEASE CONTACT:

Shannon Hunt
T: 317-472-1800
E: Shannon@VeritasRealty.com

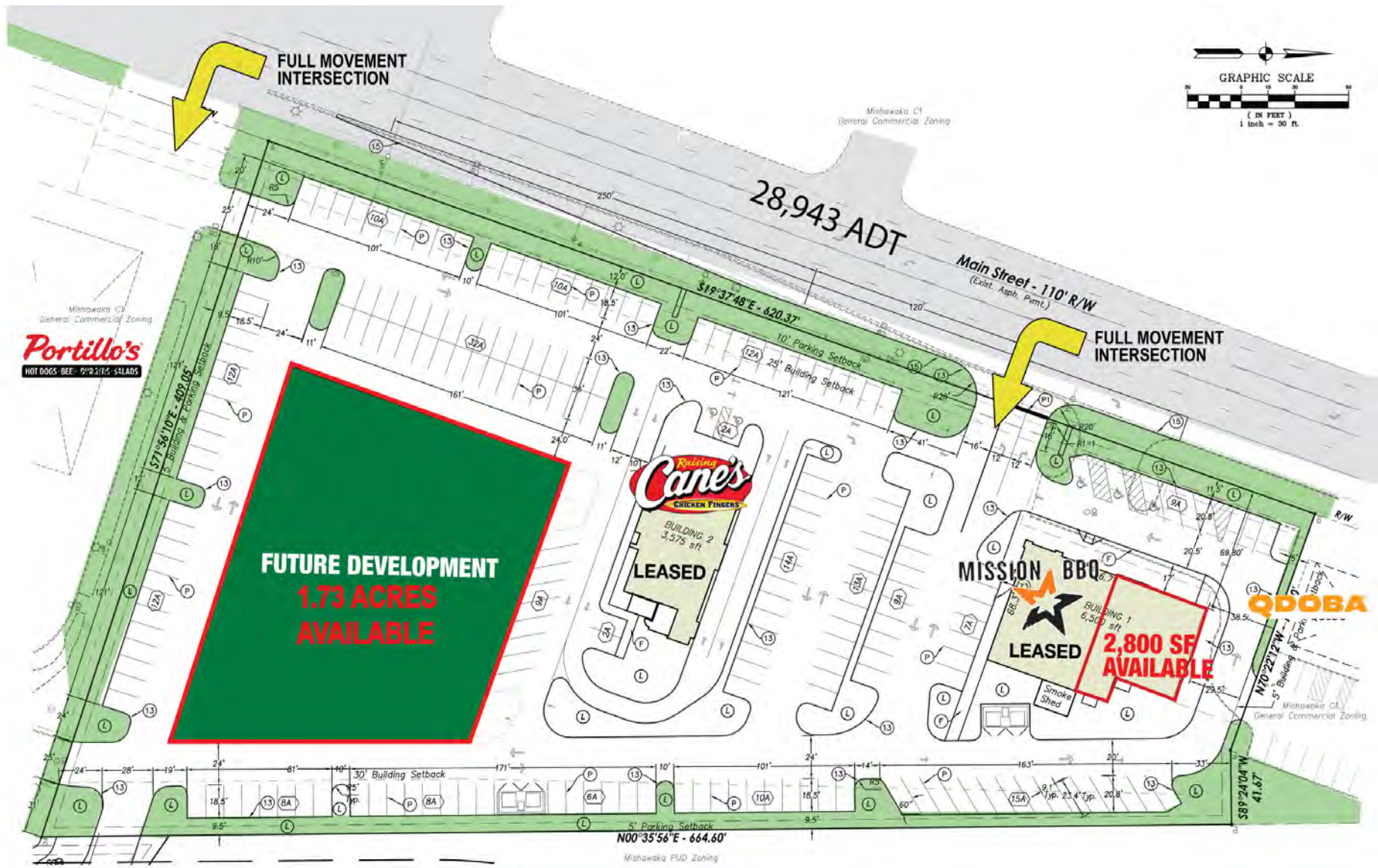
Amy Tharp
T: 317-472-1800
E: Amy@VeritasRealty.com



New Construction Small Shops & Retail Parcel for Ground Lease or Build-to-suit

2,800 SF Endcap and 1.73 Acre Parcel

5320 N. Main Street, Mishawaka, IN 46545



New Construction Small Shops & Retail Parcel for Ground Lease or Build-to-suit 2,800 SF Endcap and 1.73 Acre Parcel

5320 N. Main Street, Mishawaka, IN 46545



Information within this brochure has been obtained from sources believed reliable, but we make no representations or warranties, expressed or implied, as to the accuracy of the information. Prospective tenant and tenant representatives must verify the information and bears all risk for any inaccuracies as it relates to property and market information.

**FOR MORE INFORMATION
PLEASE CONTACT:**

Shannon Hunt
T: 317-472-1800
E: Shannon@VeritasRealty.com

Amy Tharp
T: 317-472-1800
E: Amy@VeritasRealty.com

