

# MARKET AT CLIFTY CROSSING

1,500-21,216 SF AVAILABLE | FOR LEASE

VERITAS  
REALTY

1079-1343 N National Road, Columbus IN 47201



## PROPERTY HIGHLIGHTS:

- 1,500 SF (former salon); 1,600 SF (white-box condition); and 21,216 SF (expandable to 32,607 SF) junior anchor available for lease
- +/-200,000 SF regional shopping center anchored by Best Buy, Hobby Lobby, Petco, Party City, Verizon Wireless, Pure Barre, and more!
- Excellent visibility with multiple full access points and stoplights to both National Road & 10th Street (combined 41,000+ VPD)
- Dynamic trade area with regional drawing power which includes Wal-Mart Supercenter, Target, Kroger Marketplace, Lowe's, T.J.Maxx, Ulta Beauty, and others
- Nearby dominant workforce including Cummins Global (7,937 employees), Columbus Regional Health (1,698 employees), Faurecia Clean Mobility (1,635 employees), NTN Driveshaft (1,575 employees), Toyota (1,423 employees), etc



| Demographics          | 3 mile   | 5 mile   | 7 mile   | 10 mile  |
|-----------------------|----------|----------|----------|----------|
| Population            | 8,140    | 39,679   | 50,807   | 79,712   |
| Households            | 3,705    | 16,311   | 20,354   | 31,068   |
| Daytime Population    | 10,301   | 30,590   | 35,407   | 46,610   |
| Avg. Household Income | \$74,054 | \$80,906 | \$84,378 | \$87,004 |



CONTACT: **Seth Biggerstaff**

T: 317-472-1800

E: Seth@VeritasRealty.com

**Andrew Demaree**

T: 317-472-1800

E: Ademaree@VeritasRealty.com

FOR  
LEASE

www.VeritasRealty.com

# MARKET AT CLIFTY CROSSING

1,500-21,216 SF AVAILABLE | FOR LEASE

## SITE PLAN

### TENANT ROSTER

| Suite | Tenant                 | SF        |
|-------|------------------------|-----------|
| 1     | Best Buy               | 35,032 SF |
| 2     | Petco                  | 14,880 SF |
| 3     | Red Wing Shoes         | 2,000 SF  |
| 4     | SALON COMING AVAILABLE | 1,500 SF  |
| 5     | Pure Barre             | 1,743 SF  |
| 6     | Springleaf Financial   | 1,477 SF  |
| 7     | Mancino's Pizza        | 2,700 SF  |
| 8     | Great Wall Chinese     | 1,200 SF  |
| 9     | Top Nail               | 1,200 SF  |
| 10    | Verizon Wireless       | 4,800 SF  |

| Suite | Tenant                | SF        |
|-------|-----------------------|-----------|
| 12    | Cato                  | 3,550 SF  |
| 14    | Party City            | 14,800 SF |
| 15    | Hobby Lobby           | 56,924 SF |
| 16    | AVAILABLE             | 21,216 SF |
| 16B   | A.W.F., Inc.          | 4,000 SF  |
| 17    | Family Allergy Asthma | 2,400 SF  |
| 18    | AVAILABLE             | 1,600 SF  |
| 19    | Salon Independence    | 4,364 SF  |
| 22    | Chili's               | 5,697 SF  |

### SITE PLAN



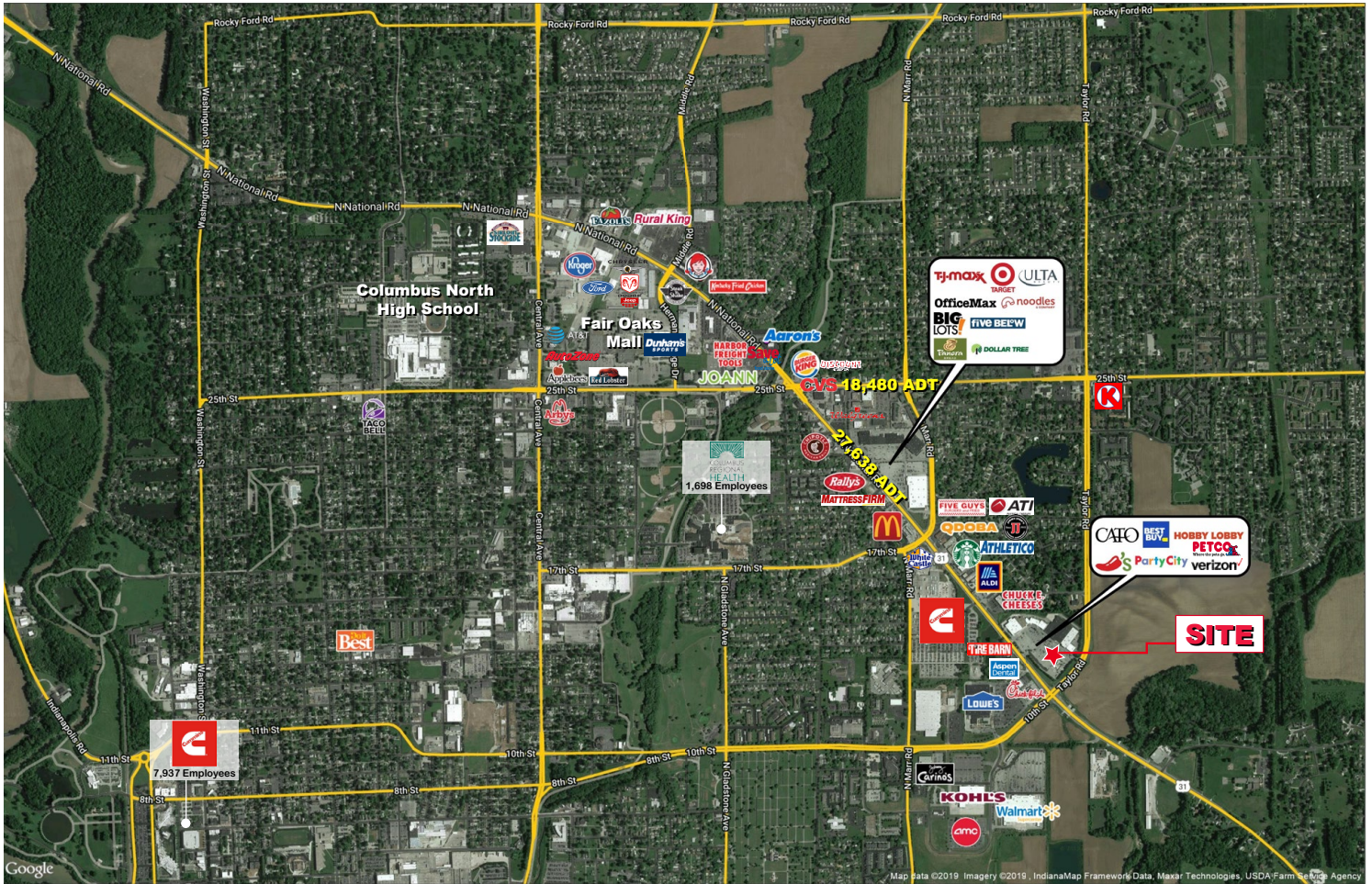
Owned and Operated By:



# MARKET AT CLIFTY CROSSING

1,500-21,216 SF AVAILABLE | FOR LEASE

## MARKET OVERVIEW



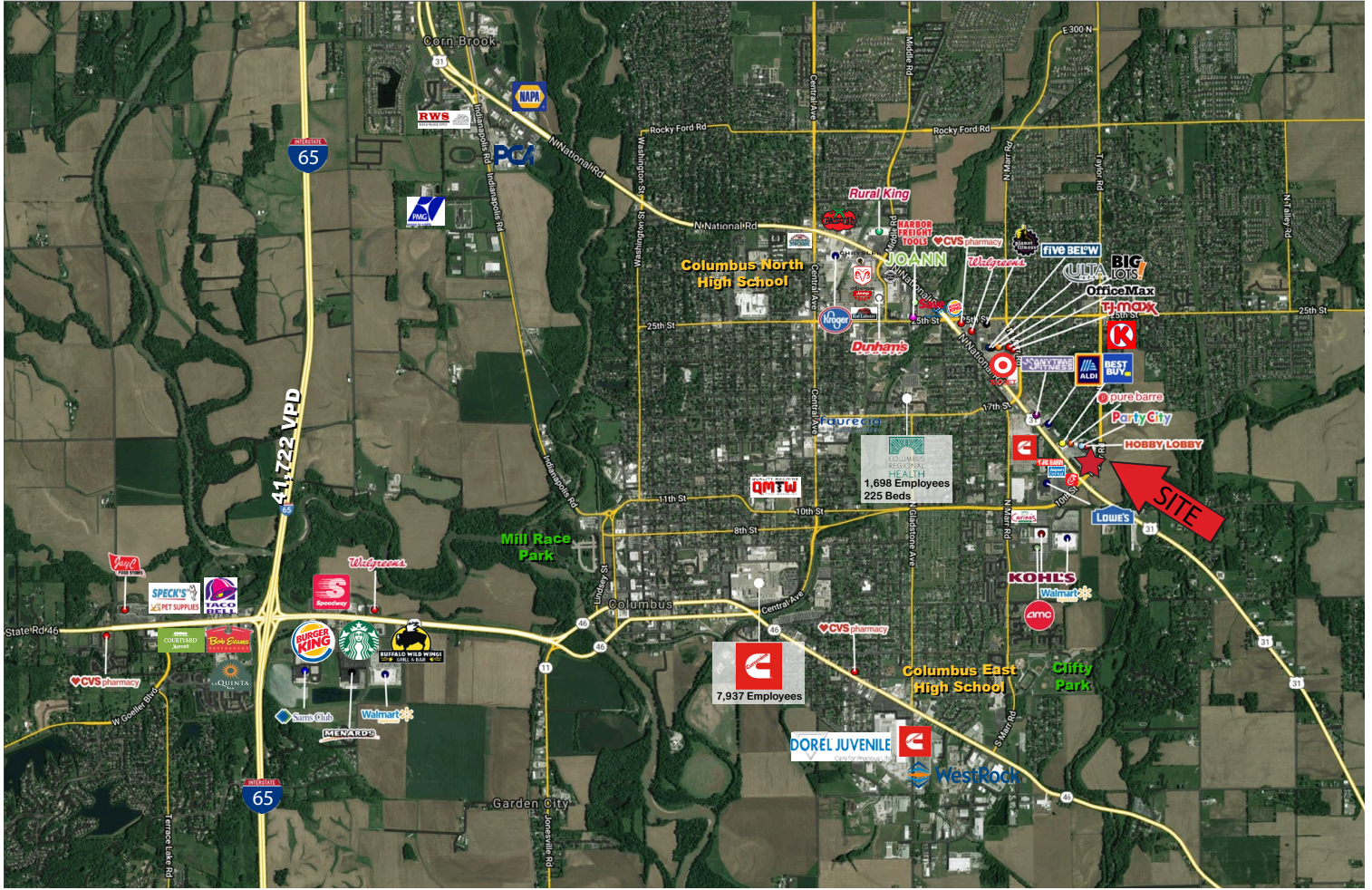
Information within this brochure has been obtained from sources believed reliable, but we make no representations or warranties, expressed or implied, as to the accuracy of the information. Prospective tenant and tenant representatives must verify the information and bears all risk for any inaccuracies as it relates to property and market information.



# MARKET AT CLIFTY CROSSING

1,500-21,216 SF AVAILABLE | FOR LEASE

## MARKET OVERVIEW



Owned and Operated By:



CONTACT:

**Seth Biggerstaff**

T: 317-472-1800

E: Seth@VeritasRealty.com

**Andrew Demaree**

T: 317-472-1800

E: Ademaree@VeritasRealty.com

**VERITAS**  
REALTY

**CHAINLINKS**  
RETAIL ADVISORS