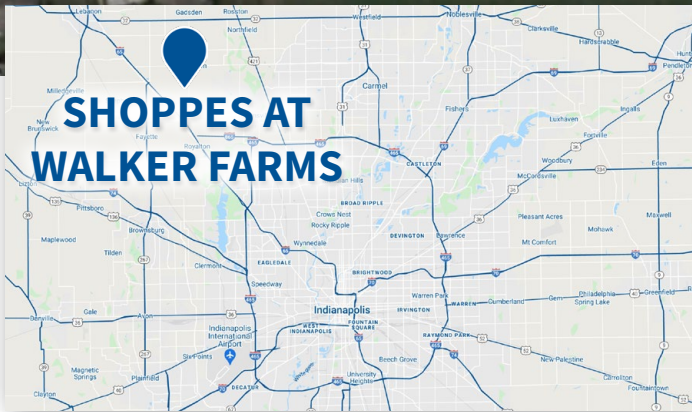
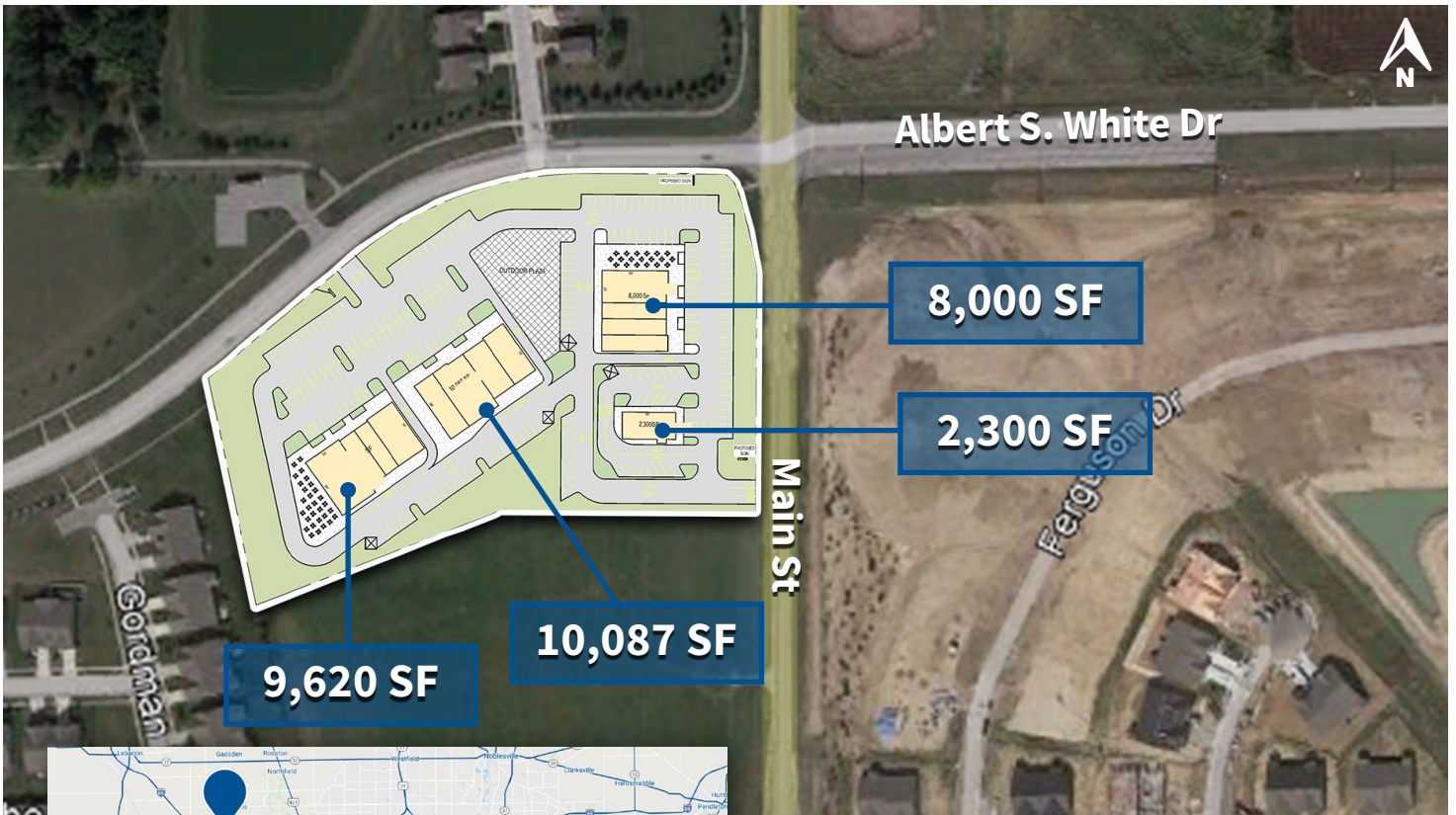


# SHOPPES AT WALKER FARMS

## NEW RETAIL & MEDICAL DEVELOPMENT COMING 2023

**VERITAS**  
REALTY

4002 S. Main Street, Whitestown, IN 46038



### PROPERTY HIGHLIGHTS:

- Pre-leasing new construction retail, medical & restaurant development coming 2023
- Perfectly situated at the hard corner (SWC) of Main St & Albert S. White Dr. in Whitestown
- Strong neighborhood location in underserved Whitestown trade-area
- Drive-thru and large patio opportunities available
- Located on the Ronald Reagan Parkway Expansion connecting 146th Street to SR-267
- Whitestown has been named the fastest growing municipality in the state for 8+ years

### DEMOGRAPHICS



3 MILE



5 MILE



15 Min Drive-time

Population:	16,284	36,318	50,472
Avg. HH Income:	\$143,842	\$161,869	\$166,433
Pop Growth (2010-21):	+8%	+4.5%	+3.9%
Households:	5,742	12,899	18,002

**CONTACT:** **Andrew Demaree**  
T: 317-472-1800  
E: Ademaree@VeritasRealty.com

**FOR  
LEASE**

[www.VeritasRealty.com](http://www.VeritasRealty.com)

# SHOPPES AT WALKER FARMS

NEW RETAIL & MEDICAL DEVELOPMENT COMING 2023

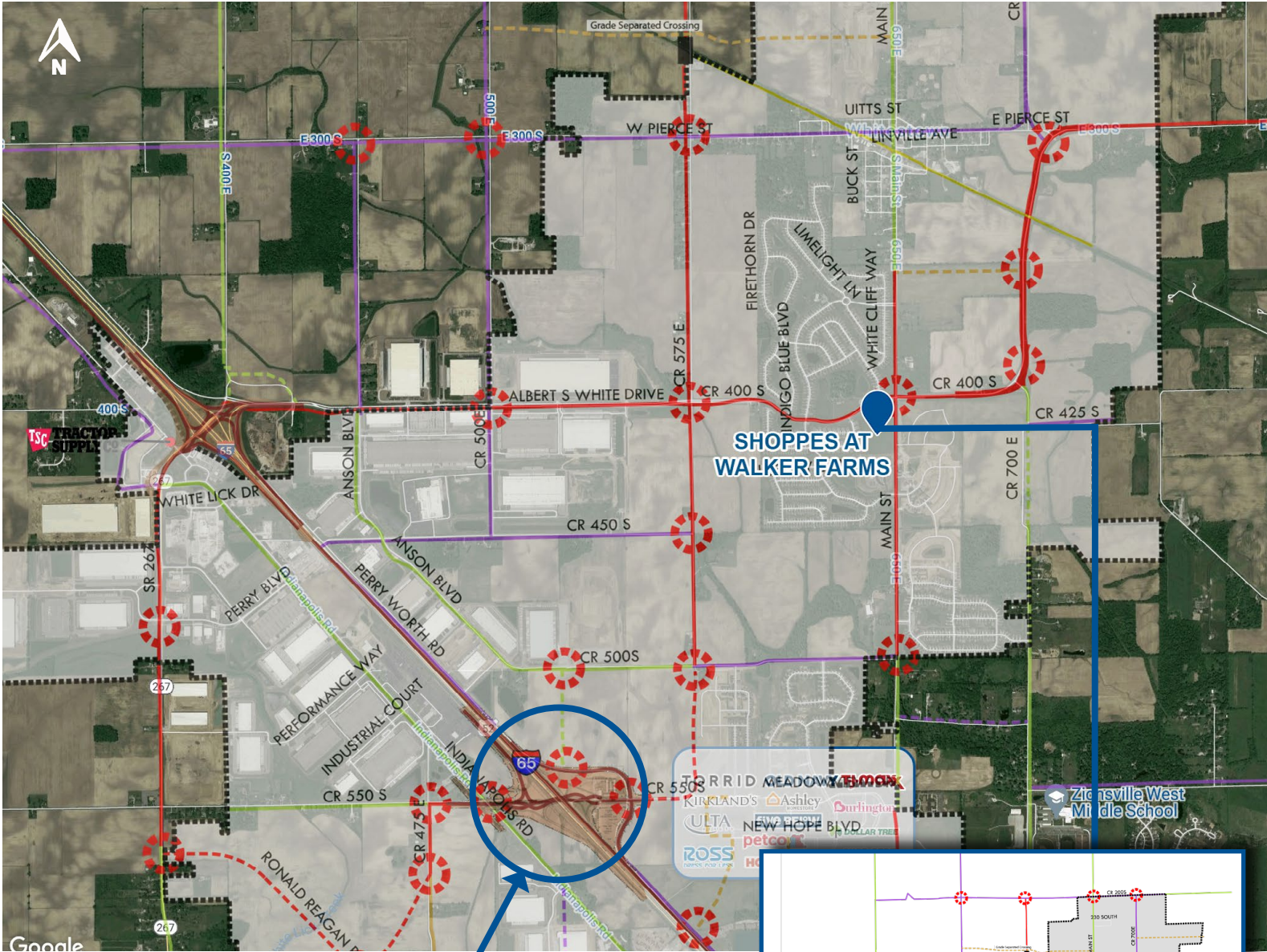
MARKET  
AERIAL



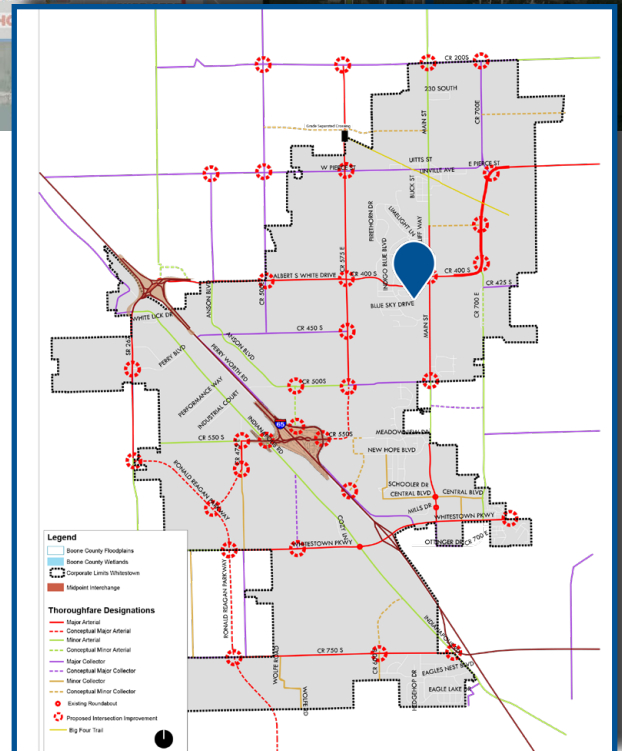
# SHOPPES AT WALKER FARMS

## NEW RETAIL & MEDICAL DEVELOPMENT COMING 2023

TRAFFIC  
AERIAL



CR 550 S Interchange Traffic Aerial -  
Late 2022 Completion



# SHOPPES AT WALKER FARMS

NEW RETAIL & MEDICAL DEVELOPMENT COMING 2023

## SITE PLAN

4002 S. Main Street, Whitestown, IN 46038



Information within this brochure has been obtained from sources believed reliable, but we make no representations or warranties, expressed or implied, as to the accuracy of the information. Prospective tenant and tenant representatives must verify the information and bears all risk for any inaccuracies as it relates to property and market information.

**CONTACT:** **Andrew Demaree**  
T: 317-472-1800  
E: [Ademaree@VeritasRealty.com](mailto:Ademaree@VeritasRealty.com)

**VERITAS**  
REALTY

[www.VeritasRealty.com](http://www.VeritasRealty.com)