

# Shoppes at Weston Pointe | Zionsville, IN

## 1,197 - 2,472 SF | Available for Lease

11145 N Michigan Rd., Zionsville, IN 46077



### Property Highlights:

- 1,197 – 2,472 SF endcap and 1,267 SF suite available for lease
- Heavily trafficked new stoplight intersection at Michigan Rd. and Weston Pointe Dr. with 27,787 cars per day
- Located in the high income, rapidly growing city of Zionsville
- This site benefits from surrounding restaurant and retail as well as new luxury apartments across Michigan Rd.

DEMOGRAPHICS	1 mile	3 mile	5 mile
Population	3,971	37,699	113,796
Households	1,603	15,146	46,012
Average HH Incomes	\$201,653	\$172,298	\$134,542
Employees	6,630	33,653	135,118

FOR MORE INFORMATION  
PLEASE CONTACT:

Shannon Hunt  
P: 317-472-1800  
E: Shannon@VeritasRealty.com





# Shoppes at Weston Pointe | Zionsville, IN 1,197 - 2,472 SF | Available for Lease

11145 N Michigan Rd., Zionsville, IN 46077



FOR MORE INFORMATION  
PLEASE CONTACT:

Shannon Hunt  
P: 317-472-1800  
E: Shannon@VeritasRealty.com

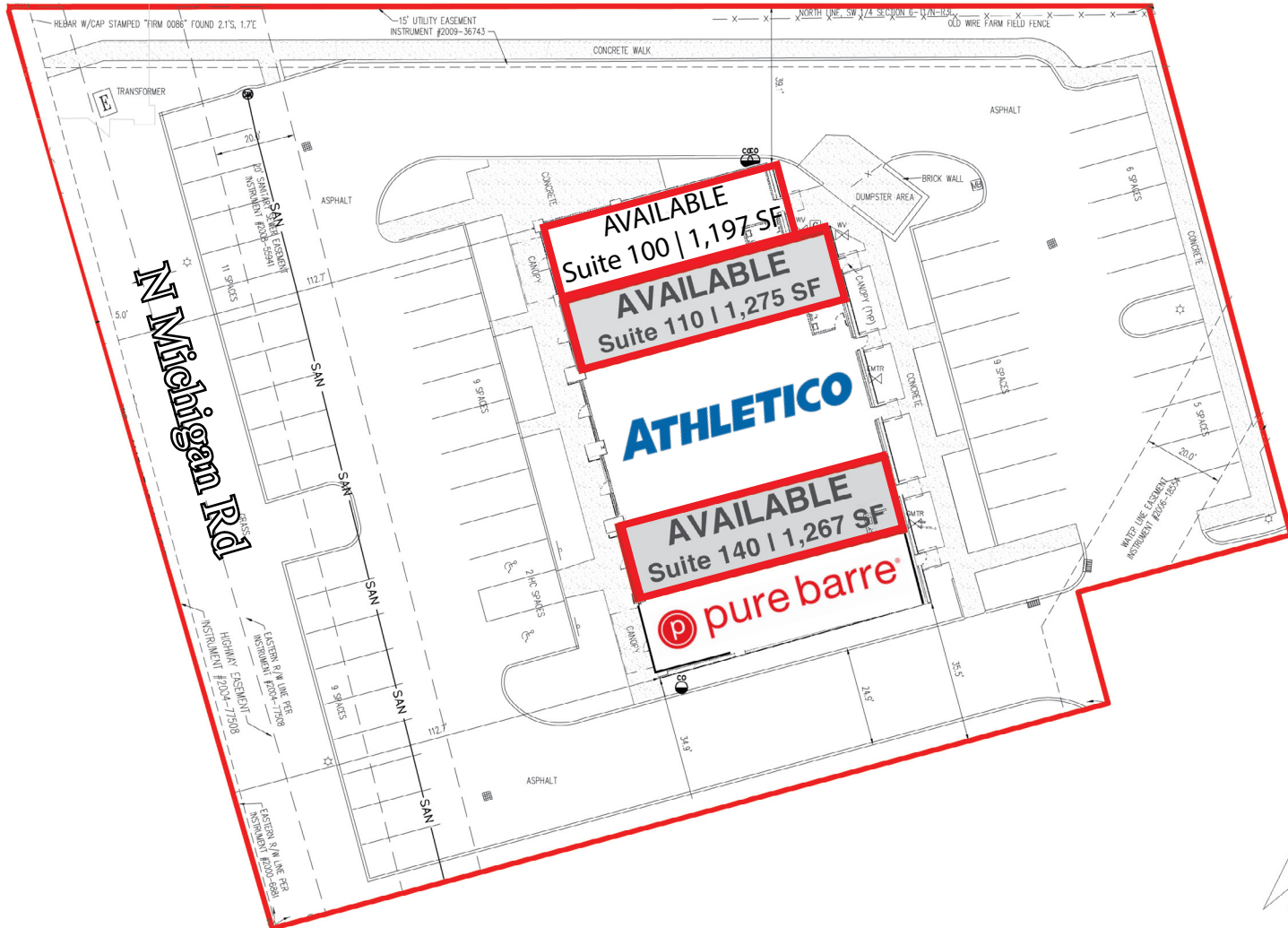
VR VERITAS  
REALTY

A MEMBER OF  
CHAINLINKS  
RETAIL ADVISORS



# Shoppes at Weston Pointe | Zionsville, IN 1,197 - 2,472 SF | Available for Lease

11145 N Michigan Rd., Zionsville, IN 46077



FOR MORE INFORMATION  
PLEASE CONTACT:

Shannon Hunt  
P: 317-472-1800  
E: Shannon@VeritasRealty.com

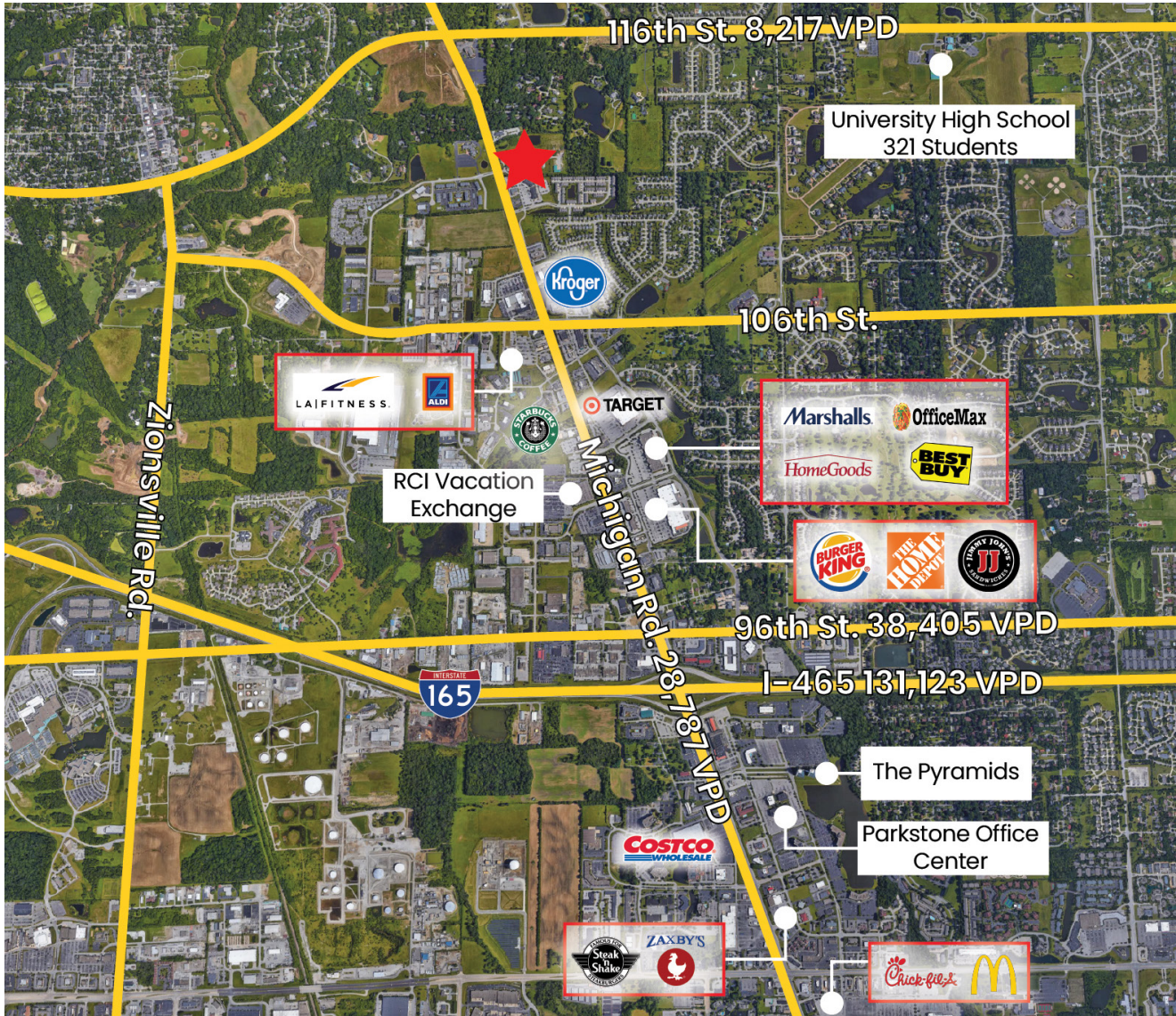
VR VERITAS  
REALTY

A MEMBER OF  
CHAINLINKS  
RETAIL ADVISORS



# Shoppes at Weston Pointe | Zionsville, IN 1,197 - 2,472 SF | Available for Lease

11145 N Michigan Rd., Zionsville, IN 46077



Information within this brochure has been obtained from sources believed reliable, but we make no representations or warranties, expressed or implied, as to the accuracy of the information. Prospective tenant and tenant representatives must verify the information and bears all risk for any inaccuracies as it relates to property and market information.

FOR MORE INFORMATION  
PLEASE CONTACT:

Shannon Hunt  
P: 317-472-1800  
E: Shannon@VeritasRealty.com

VR VERITAS  
REALTY

A MEMBER OF  
CHAINLINKS  
RETAIL ADVISORS