

Lafayette Shopping Center | Pay Less Super Market Anchored Center Outlot, Endcap, and Inline Space Available

2200 Greenbush Street, Lafayette, IN 47904

Property Overview

Site Plan

Aerial (Market)



Property Highlights:

- 2,800-4,026 SF endcap available for lease
- 1,226 SF former salon available for lease
- 2,500 SF outlot building available for lease
- Excellent neighborhood shopping center anchored by Pay Less Super Market
- Stoplight Entrance off of Greenbush Street (10,175 VPD)
- Just minutes from Purdue University (43,311 students and 15,000+ employees)
- Located near Franciscan Health Lafayette Central, a 155 bed hospital, and IU Health Arnett Medical Center



DEMOGRAPHICS	1 mile	3 mile	5 mile
Population	12,398	83,242	145,954
Households	5,360	31,072	56,486
Average HH Incomes	\$56,687	\$68,226	\$73,284

FOR MORE INFORMATION
PLEASE CONTACT:

Seth Biggerstaff
T: 317-472-1800
E: Seth@VeritasRealty.com

Shannon Hunt
T: 317-472-1800
E: Shannon@VeritasRealty.com



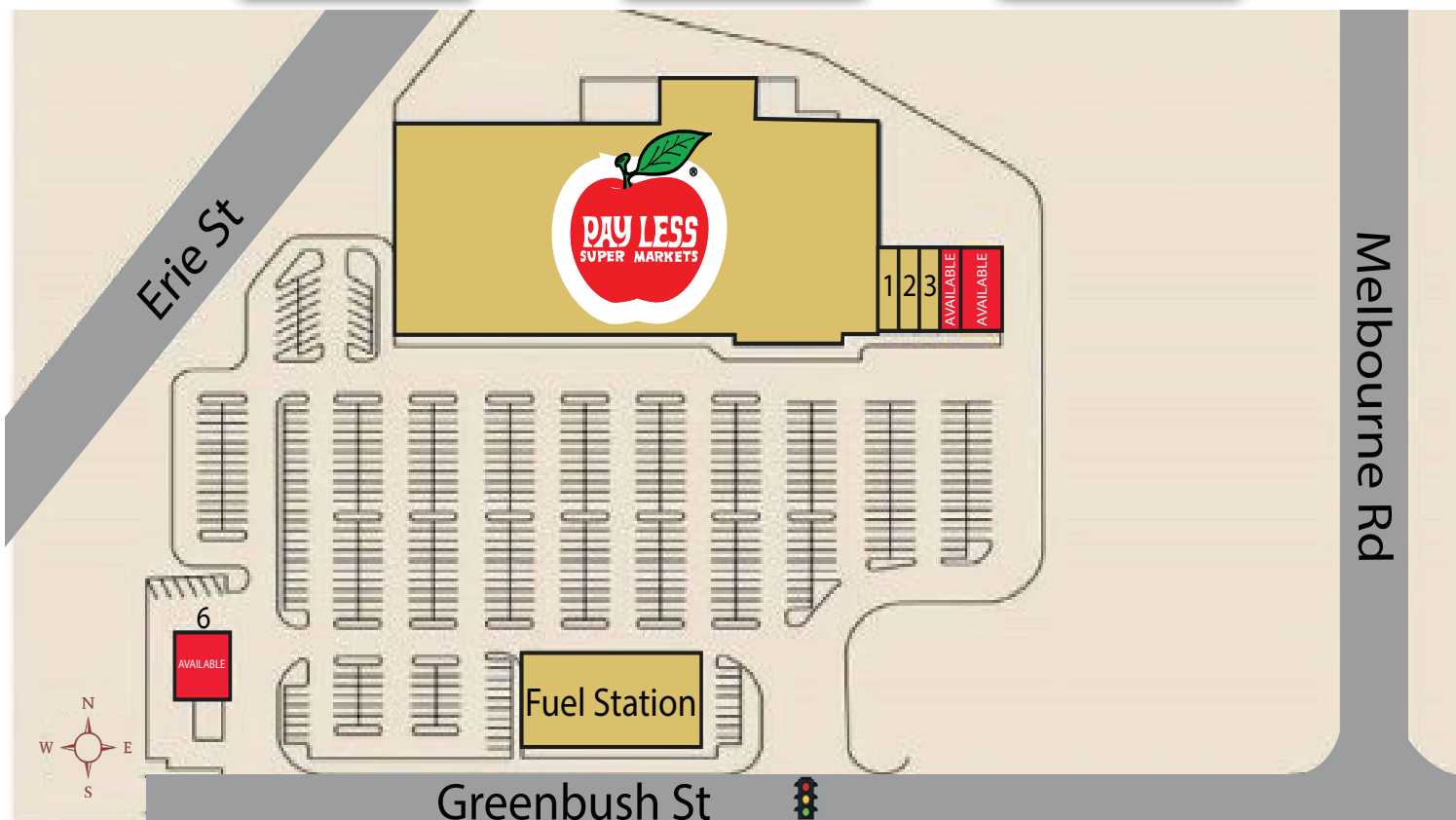
Lafayette Shopping Center | Pay Less Super Market Anchored Center Outlot, Endcap, and Inline Space Available

2200 Greenbush Street, Lafayette, IN 47904

Property Overview

Site Plan

Aerial (Market)



Suite	Tenant	Size
1	Discount Tobacco	
2	China King	
3	Papa John's	
4	AVAILABLE - Former Salon	1,226 SF
5	AVAILABLE	2,800 SF
6	AVAILABLE	2,500 SF
7	Pay Less Super Market	80,000 SF



FOR MORE INFORMATION
PLEASE CONTACT:

Seth Biggerstaff
T: 317-472-1800
E: Seth@VeritasRealty.com

Shannon Hunt
T: 317-472-1800
E: Shannon@VeritasRealty.com



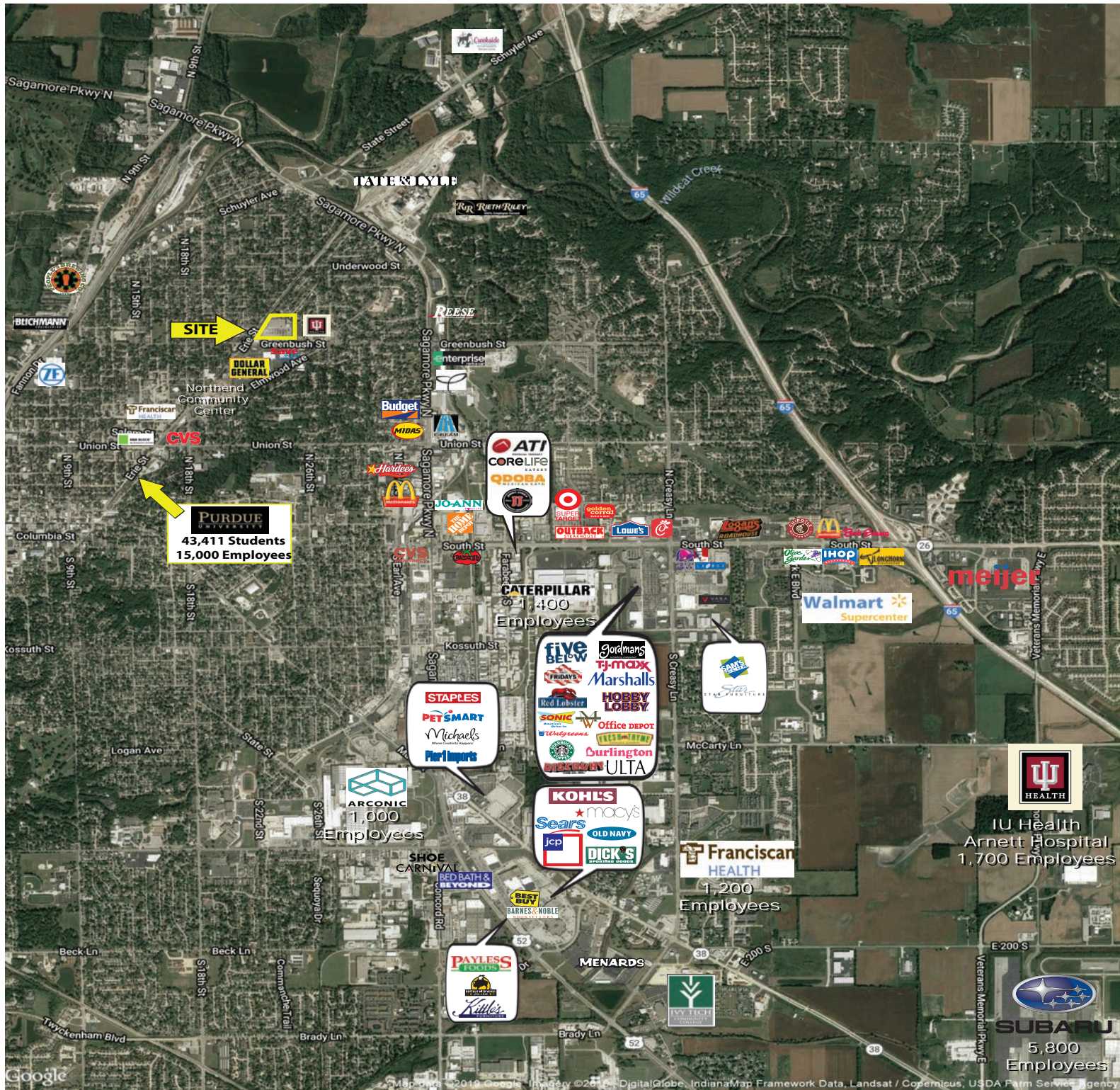
Lafayette Shopping Center | Pay Less Super Market Anchored Center Outlot, Endcap, and Inline Space Available

2200 Greenbush Street, Lafayette, IN 47904

Property Overview

Site Plan

Aerial (Market)



Information within this brochure has been obtained from sources believed reliable, but we make no representations or warranties, expressed or implied, as to the accuracy of the information. Prospective tenant and tenant representatives must verify the information and bears all risk for any inaccuracies as it relates to property and market information.