

Murphy's Landing Shopping Center Kroger Anchored Retail Center 1,800-2,400 SF available with drive-thru opportunity

1330-1480 W Southport Road, Indianapolis, IN 46217

Highlights

Site Plan

Drive-thru Plan

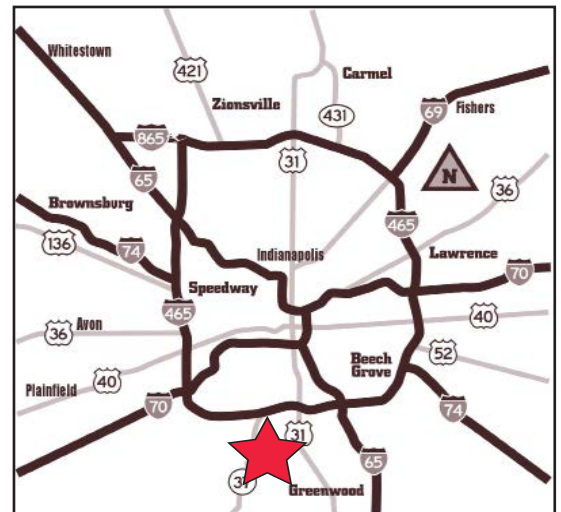
Aerial

Photos



Property Highlights:

- 1,800-2,400 SF Available
 - 2,400 SF endcap - patio or potential drive-thru opportunity
 - 1,800 SF endcap – former insurance office
- Highly visible with multiple access points, including a stoplight, to the busy intersection of Southport Road & Bluff Road with a combined 28,752 cars per day
- Anchored by a strong-performing 82,000 SF Kroger Supermarket who has expanded twice in the past
- Tenants include Verizon Wireless, Chase Bank, Great Clips, Domino's, UPS Store, and others
- Located off of future I-69 Interchange, one of the few interchanges on the southside of Indianapolis
- Just south of I-465 (103,314 cars per day)



DEMOGRAPHICS	1 mile	3 mile	5 miles	7 miles
Population	12,173	57,911	170,184	305,659
Households	4,599	22,975	65,654	117,757
Ave HH Income	\$79,964	\$77,648	\$73,630	\$71,678

FOR MORE INFORMATION
PLEASE CONTACT:

Seth Biggerstaff
T: 317-472-1800
E: Seth@VeritasRealty.com

Amy Tharp
T: 317-472-1800
E: Amy@VeritasRealty.com

VR VERITAS
REALTY

A MEMBER OF
CHAINLINKS
RETAIL ADVISORS

Murphy's Landing Shopping Center Kroger Anchored Retail Center 1,800-2,400 SF available with drive-thru opportunity

1330-1480 W Southport Road, Indianapolis, IN 46217

Highlights

Site Plan

Drive-thru Plan

Aerial

Photos



Tenant	SF
Kroger	82,073 SF
Great Clips	1,200 SF
The UPS Store	1,200 SF
Mizu Sushi & Hibachi	1,200 SF
H&R Block	1,200 SF
Domino's Pizza	1,200 SF
Polish Mi Nail Salon	2,400 SF
AVAILABLE Restaurant with Patio	2,400 SF
AVAILABLE Insurance Office	1,800 SF
Kelli Hinds Family Dentistry	2,362 SF
Verizon	1,600 SF
Fiesta Ranchera	3,805 SF
Southport Liquor	3,095 SF
Total GLA	106,065 SF

FOR MORE INFORMATION
PLEASE CONTACT:

Seth Biggerstaff
T: 317-472-1800
E: Seth@VeritasRealty.com

Amy Tharp
T: 317-472-1800
E: Amy@VeritasRealty.com

VR VERITAS
REALTY

A MEMBER OF
CHAINLINKS
RETAIL ADVISORS

Murphy's Landing Shopping Center Kroger Anchored Retail Center 1,800-2,400 SF available with drive-thru opportunity

1330-1480 W Southport Road, Indianapolis, IN 46217

Highlights

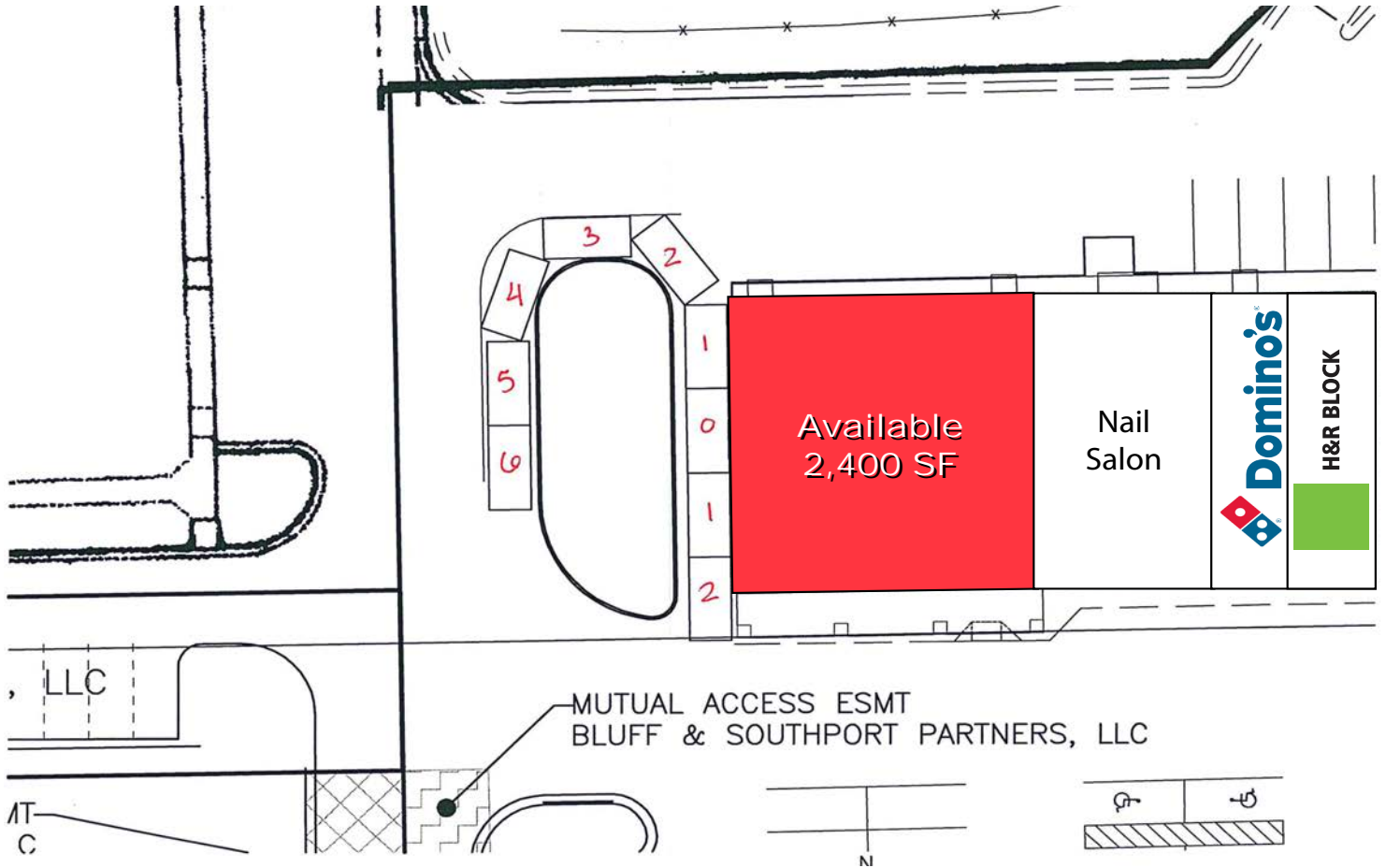
Site Plan

Drive-thru Plan

Aerial

Photos

Potential Drive-Thru Opportunity



FOR MORE INFORMATION
PLEASE CONTACT:

Seth Biggerstaff

T: 317-472-1800

E: Seth@VeritasRealty.com

Amy Tharp

T: 317-472-1800

E: Amy@VeritasRealty.com

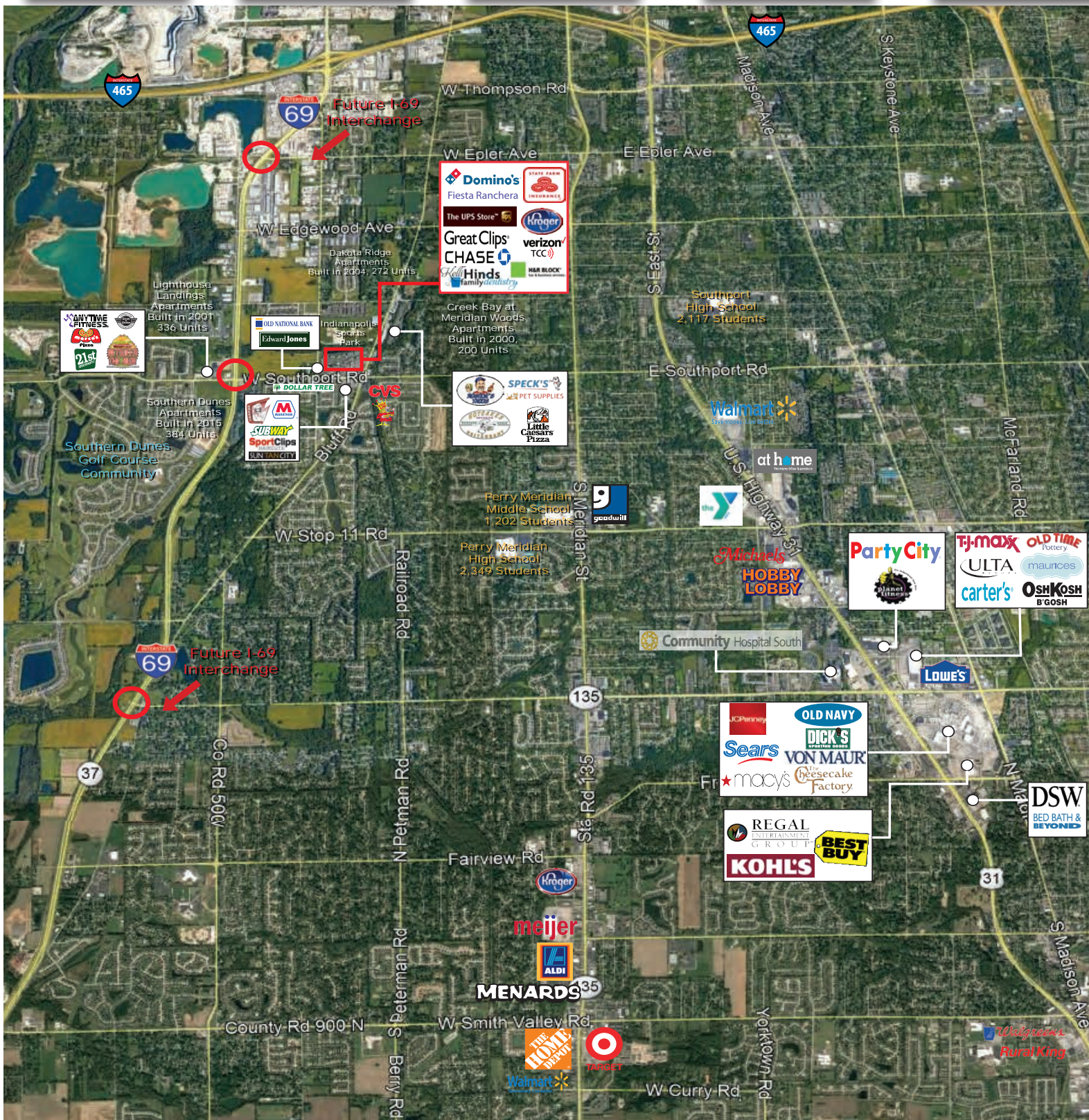
VR VERITAS
REALTY

A MEMBER OF
CHAINLINKS
RETAIL ADVISORS

Murphy's Landing Shopping Center Kroger Anchored Retail Center 1,800-2,400 SF available with drive-thru opportunity

1330-1480 W Southport Road, Indianapolis, IN 46217

- Highlights
- Site Plan
- Drive-thru Plan
- Aerial
- Photos



FOR MORE INFORMATION
 PLEASE CONTACT:

Seth Biggerstaff
 T: 317-472-1800
 E: Seth@VeritasRealty.com

Amy Tharp
 T: 317-472-1800
 E: Amy@VeritasRealty.com



Murphy's Landing Shopping Center Kroger Anchored Retail Center 1,800-2,400 SF available with drive-thru opportunity

1330-1480 W Southport Road, Indianapolis, IN 46217

Highlights

Site Plan

Drive-thru Plan

Aerial

Photos



Information within this brochure has been obtained from sources believed reliable, but we make no representations or warranties, expressed or implied, as to the accuracy of the information. Prospective tenant and tenant representatives must verify the information and bears all risk for any inaccuracies as it relates to property and market information.

FOR MORE INFORMATION
PLEASE CONTACT:

Seth Biggerstaff
T: 317-472-1800
E: Seth@VeritasRealty.com

Amy Tharp
T: 317-472-1800
E: Amy@VeritasRealty.com

VR VERITAS
REALTY

A MEMBER OF
CHAINLINKS
RETAIL ADVISORS