

Retail Shopping Center For Lease

Fully Occupied

922 N Meridian St, Portland, IN 47371



Property Highlights:

- Current tenants include The Cellular Connection, LLC dba Verizon Wireless & Raymond James Financial advisors with a corporately guaranteed lease.
- Visible and accessible to over 10,700 cars per day along State Road 27 in Portland, Indiana the county seat of Jay County with a population of 21,253.
- Jay County is home to a thriving regional economy with many employers including IU Health Jay County Hospital, Tyson, Sonoco, US Aggregates, Poet Bio Refining, Walmart, FCC North America, Pier-Mac Plastics, Inc., Pennville Custom Cabinetry, Fort Recovery Construction & Equipment, & ATI Forged Products.



FOR MORE INFORMATION
PLEASE CONTACT:

Seth Biggerstaff
T: 317-472-1800
E: Seth@VeritasRealty.com

John Holloway
T: 317-472-1800
E: John@VeritasRealty.com

VR VERITAS
REALTY

A MEMBER OF
CHAINLINKS
RETAIL ADVISORS

Retail Shopping Center For Lease

Fully Occupied

922 N Meridian St, Portland, IN 47371



**FOR MORE INFORMATION
PLEASE CONTACT:**

Seth Biggerstaff

T: 317-472-1800

E: Seth@VeritasRealty.com

John Holloway

T: 317-472-1800

E: John@VeritasRealty.com

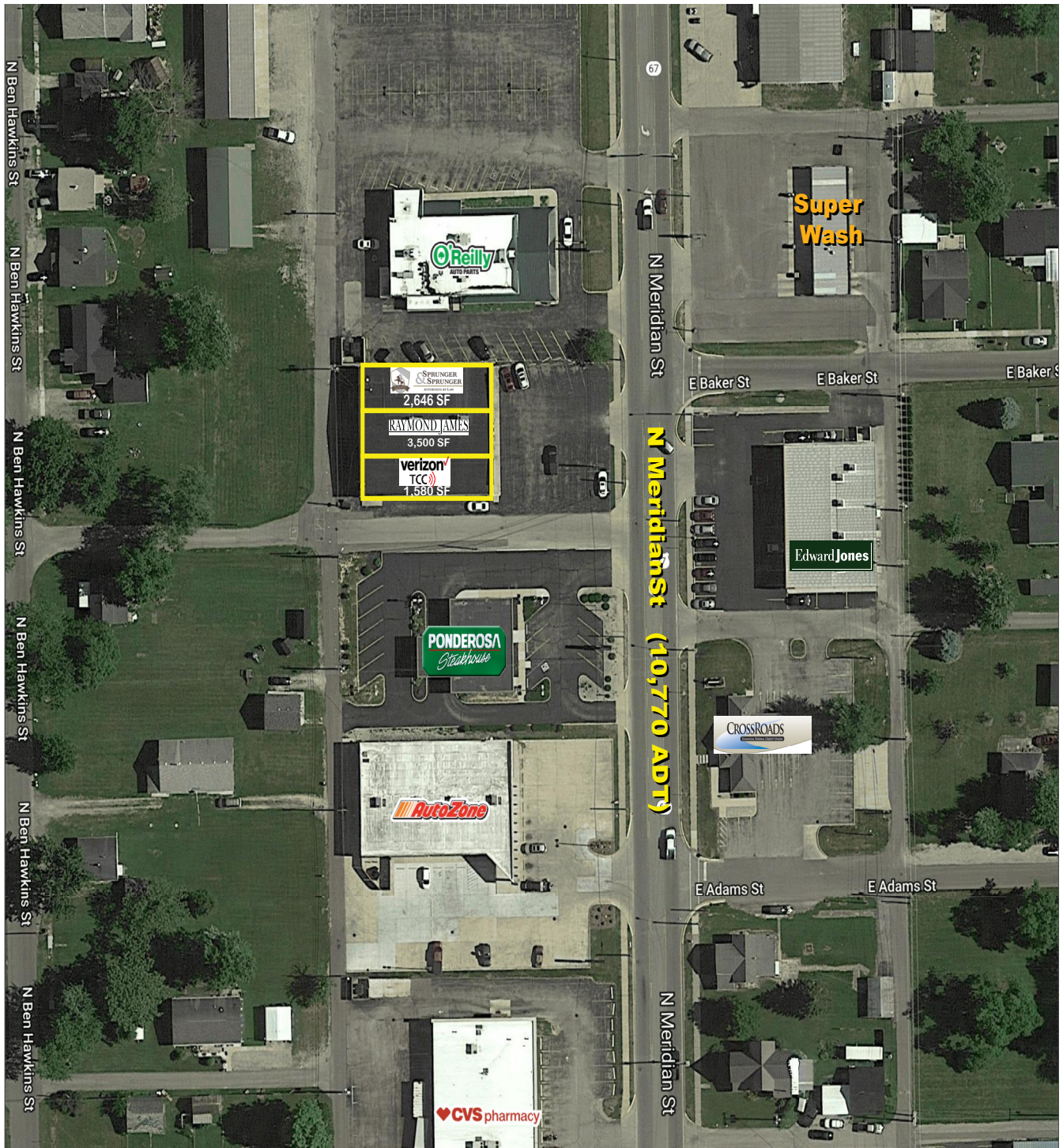
VR VERITAS
REALTY

A MEMBER OF
CHAINLINKS
RETAIL ADVISORS

Retail Shopping Center For Lease

Fully Occupied

922 N Meridian St, Portland, IN 47371



FOR MORE INFORMATION
PLEASE CONTACT:

Seth Biggerstaff

T: 317-472-1800

E: Seth@VeritasRealty.com

John Holloway

T: 317-472-1800

E: John@VeritasRealty.com

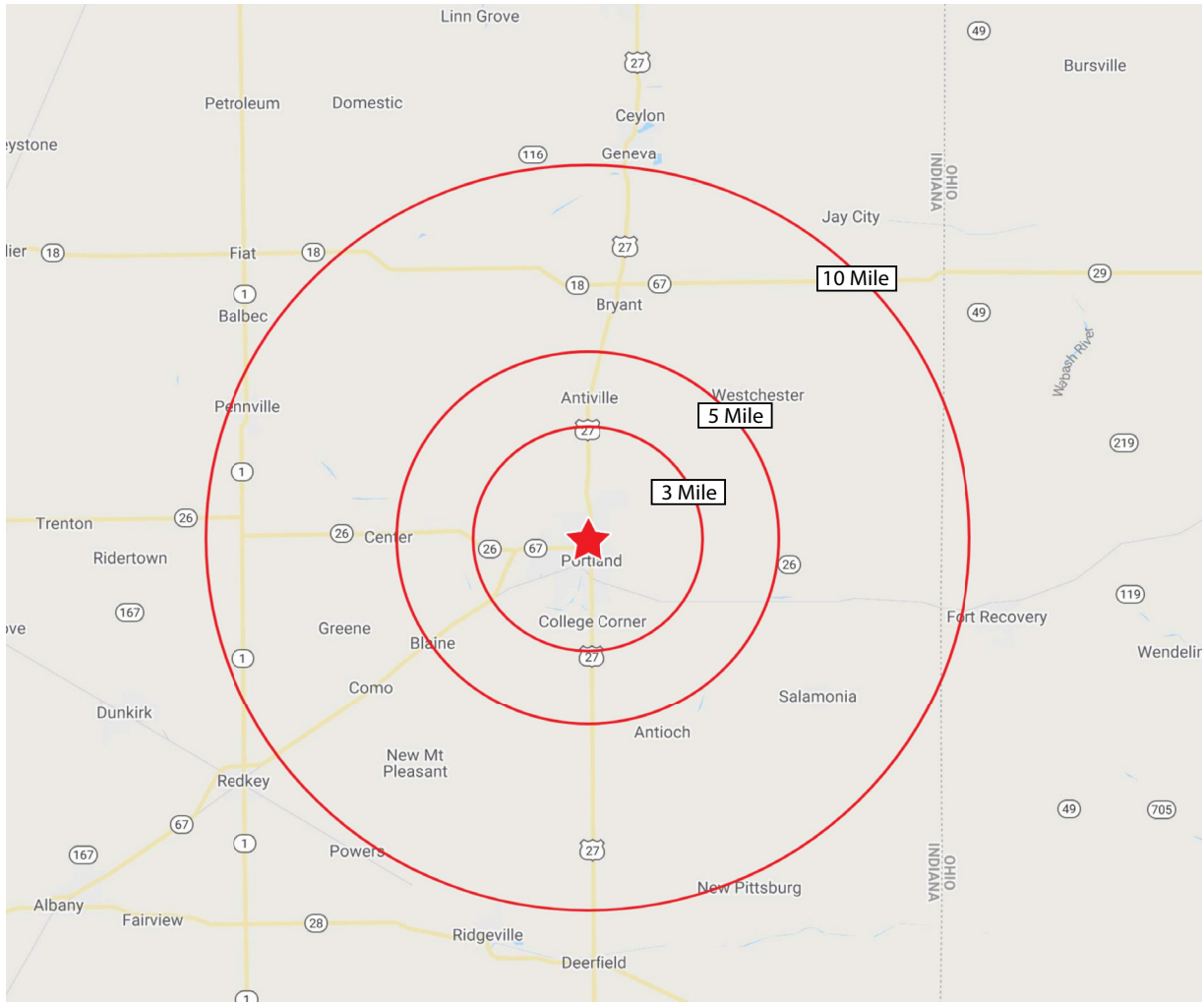
VR VERITAS
REALTY

A MEMBER OF
CHAINLINKS
RETAIL ADVISORS

Retail Shopping Center For Lease

Fully Occupied

922 N Meridian St, Portland, IN 47371



Demographics	3 mile	5 mile	10 mile
Estimated Population	7,746	9,264	15,632
Est. Avg. HH Income	\$53,088	\$54,753	\$57,399
Households	3,193	3,734	5,950

FOR MORE INFORMATION
PLEASE CONTACT:

Seth Biggerstaff

T: 317-472-1800

E: Seth@VeritasRealty.com

John Holloway

T: 317-472-1800

E: John@VeritasRealty.com

