

# New Construction - Retail Small Shops - Spring 2020 Delivery

2310 IN-3, Greensburg, IN 47240

- Project Overview
- Aerial (Market)
- Aerial (Site)
- Site Plan
- Elevations
- Pylon



## Property Highlights:

- New construction small shops at the hard corner of SR 3 and Freeland Road
- Up to 8,888 SF available with 60' depth
- 55 exclusive parking spaces
- Two pylons serving the shopping center – One interstate pylon and one at the NEC of SR 3 & Freeland Road
- Drive-thru and restaurant with patio endcap opportunities available
- Delivery Spring 2020

DEMOGRAPHICS	5 mile	10 mile	15 mile
Population	15,042	24,103	43,850
Households	6,050	9,463	16,898
Avg. HH Income	\$67,959	\$72,515	\$74,919
Median HH Income	\$55,806	\$57,586	\$59,440



Project Overview

Aerial (Market)

Aerial (Site)

Site Plan

Elevations

Pylon





Project Overview

Aerial (Market)

Aerial (Site)

Site Plan

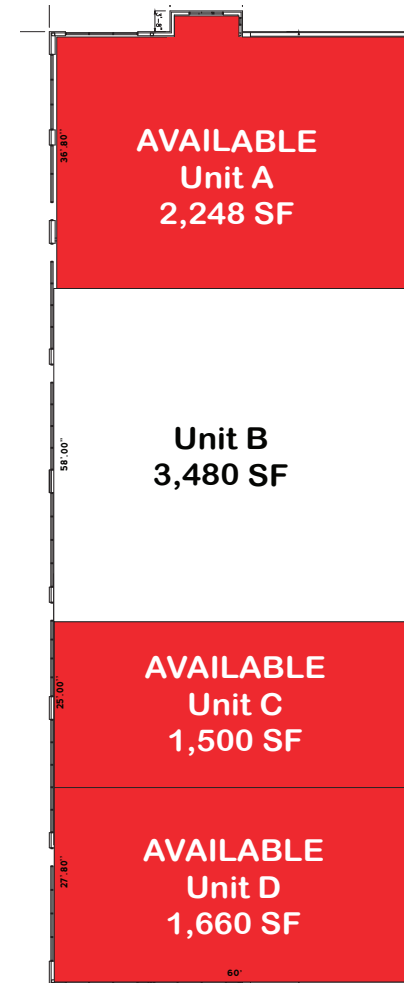
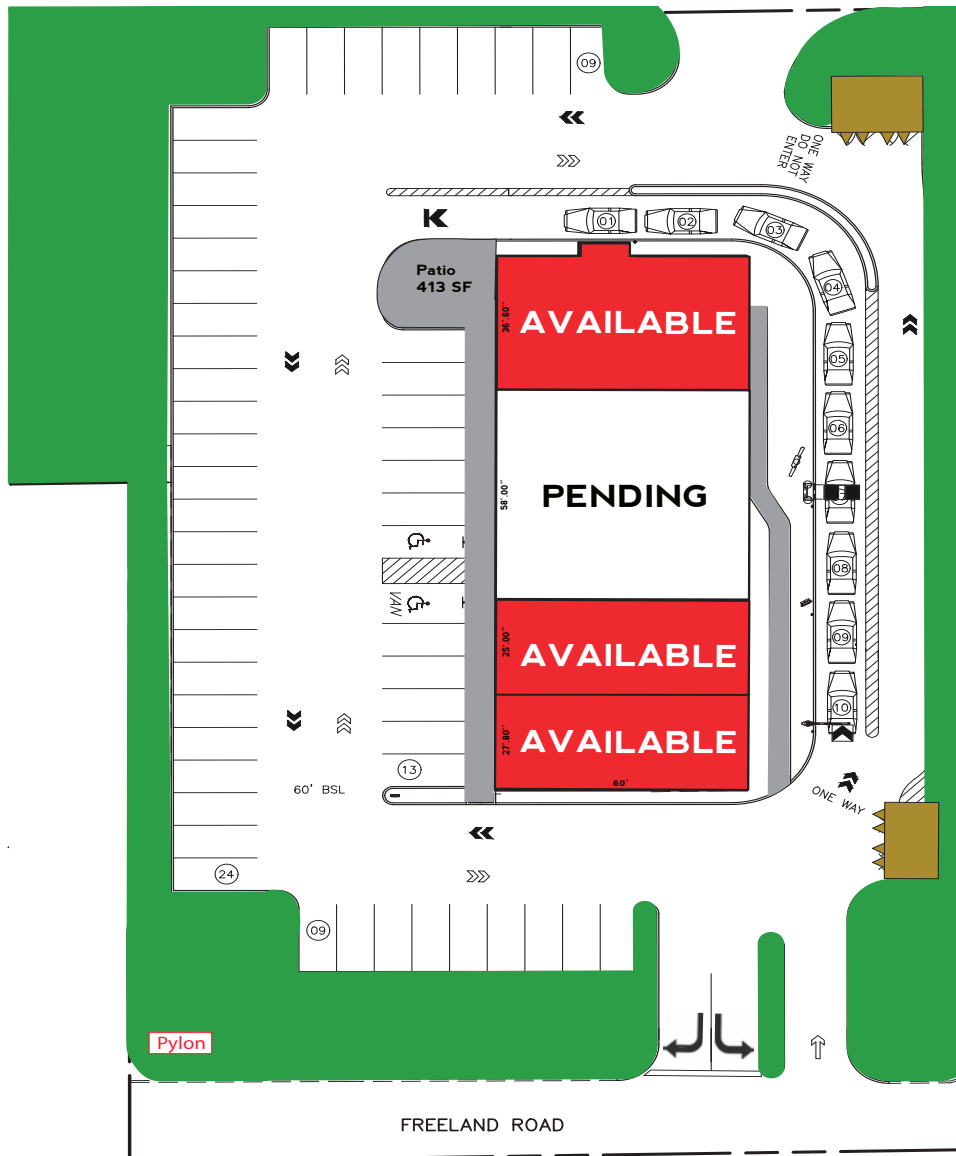
Elevations

Pylon





Cross Access  
Easement to Walmart



Suite	Tenant	SF
A	AVAILABLE	2,248
B	Pending	3,480
C	AVAILABLE	1,500
D	AVAILABLE	1,660
Total		8,888

Project Overview

Aerial (Market)

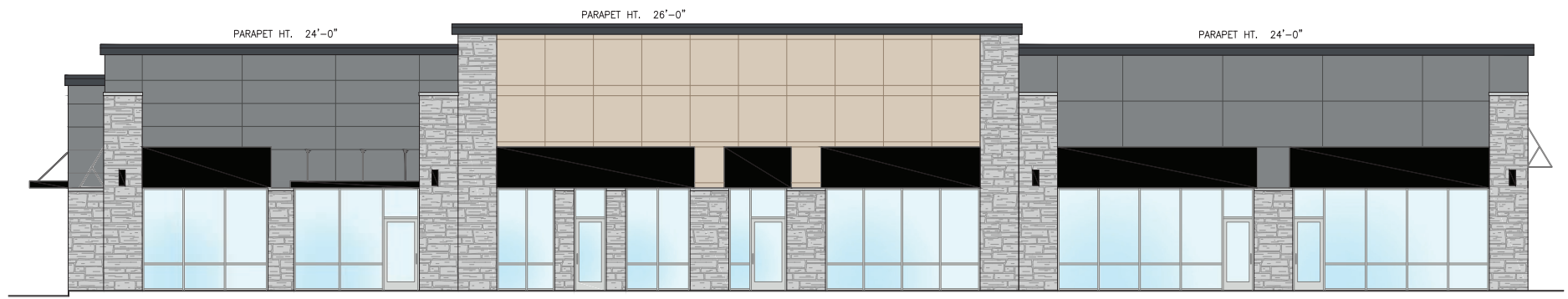
Aerial (Site)

Site Plan

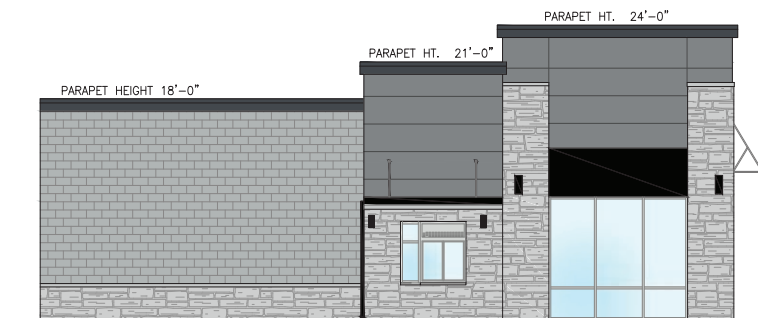
Elevations

Pylon

## West Elevation



## North Elevation



## South Elevation





# New Construction - Retail Small Shops - Spring 2020 Delivery

2310 IN-3, Greensburg, IN 47240

Project Overview

Aerial (Market)

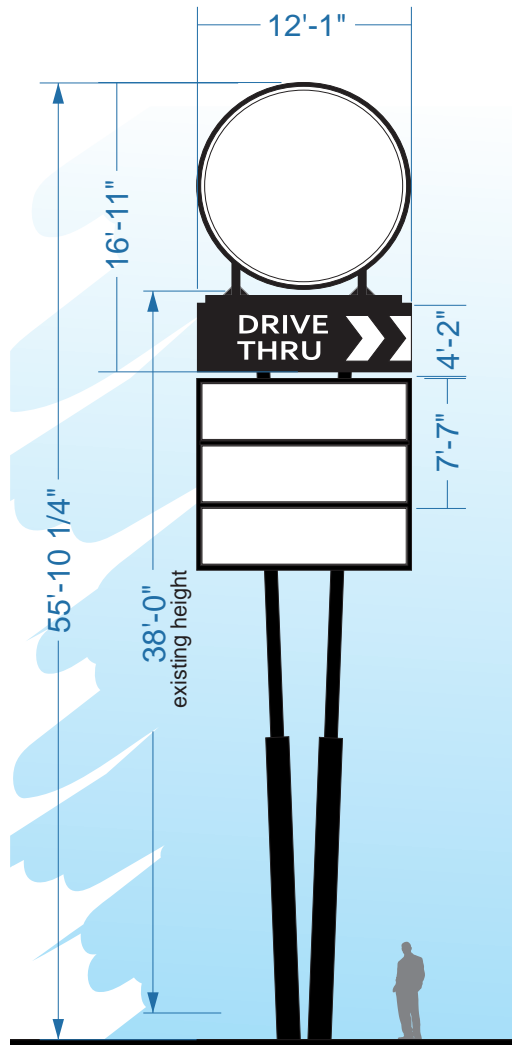
Aerial (Site)

Site Plan

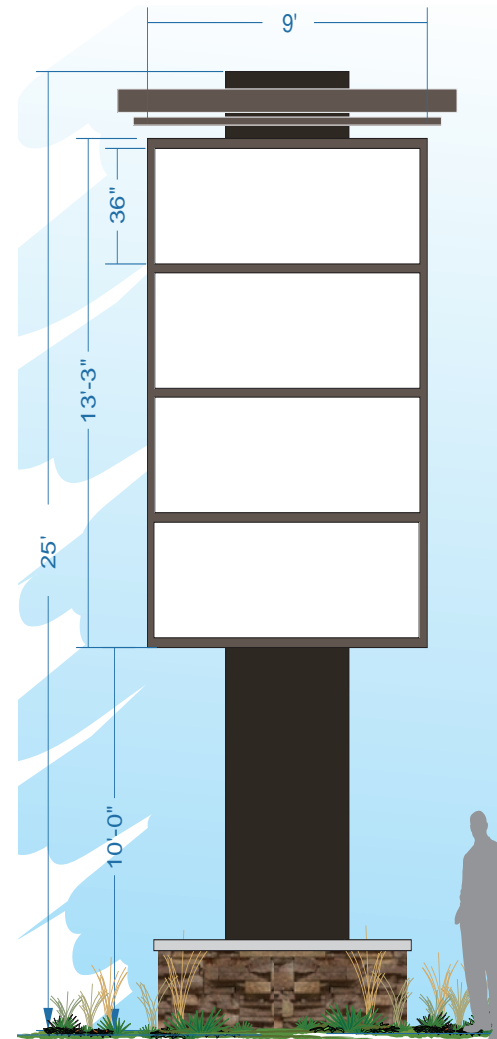
Elevations

Pylon

## Interstate Pylon



## Freeland Road Pylon



Information within this brochure has been obtained from sources believed reliable, but we make no representations or warranties, expressed or implied, as to the accuracy of the information. Prospective tenant and tenant representatives must verify the information and bears all risk for any inaccuracies as it relates to property and market information.

FOR MORE INFORMATION  
PLEASE CONTACT:

AMY THARP

T: 317-472-1800

E: Amy@VeritasRealty.com

KYLE HUGHES

T: 317-472-1800

E: KHughes@VeritasRealty.com

VR VERITAS  
REALTY

A MEMBER OF  
CHAINLINKS  
RETAIL ADVISORS