

HUNTINGTON SHOPPES

PRIME OUTLOT: 1 ACRE, fully improved, shovel ready

For Sale, Ground Lease, Build to Suit

235 Hauenstein Rd, Huntington, IN 46750

Project Overview

Site Plan

Aerial (Site)

Aerial (Market)



Property Highlights:

- Best remaining available commercial outlot in Huntington IN
- Shared ingress / egress with Huntington Shoppes opening Spring 2019
- Prime visibility and great access to Hauenstein Rd & Highway 24
- 0.962 acre available
- Shovel ready, all utilities and drainage existing
- Great Restaurant, Bank, Medical, Office or Retail Site
- High traffic area surrounded by National Retailers / Restaurants
- Large, expanded population base with regional drawing power; Huntington serves as the county seat

DEMOGRAPHICS	3 miles	5 miles	10 miles	15 miles
Population	20,015	23,410	33,699	60,738
Households	7,581	8,876	12,791	22,783
Ave. HH Income	\$54,889	\$56,908	\$61,350	\$74,276

FOR MORE INFORMATION
PLEASE CONTACT:

JAMISON DOWNS

T: 317-472-1800 E: Jamison@VeritasRealty.com

VR VERITAS
REALTY

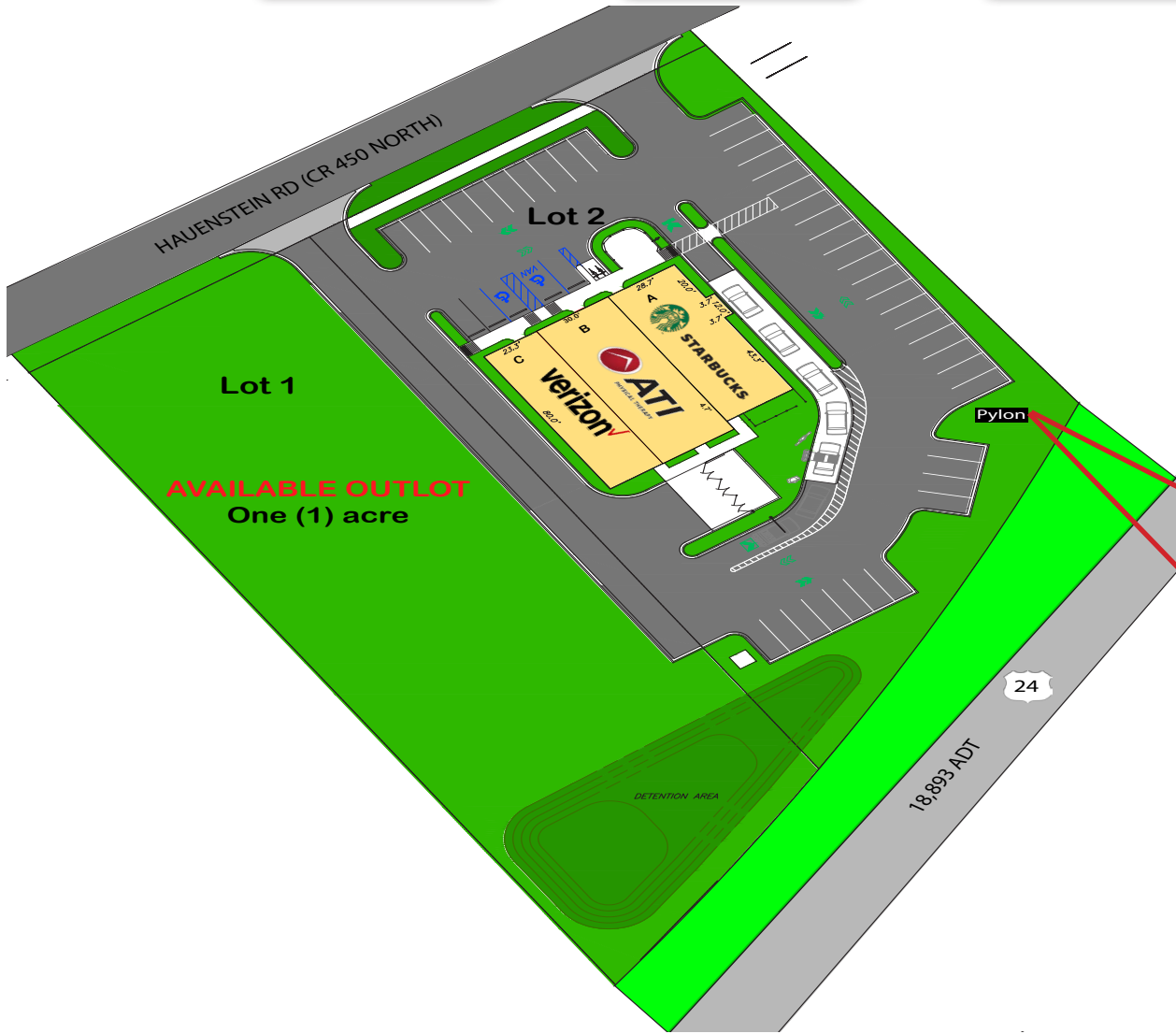
A MEMBER OF
CHAINLINKS
RETAIL ADVISORS

Project Overview

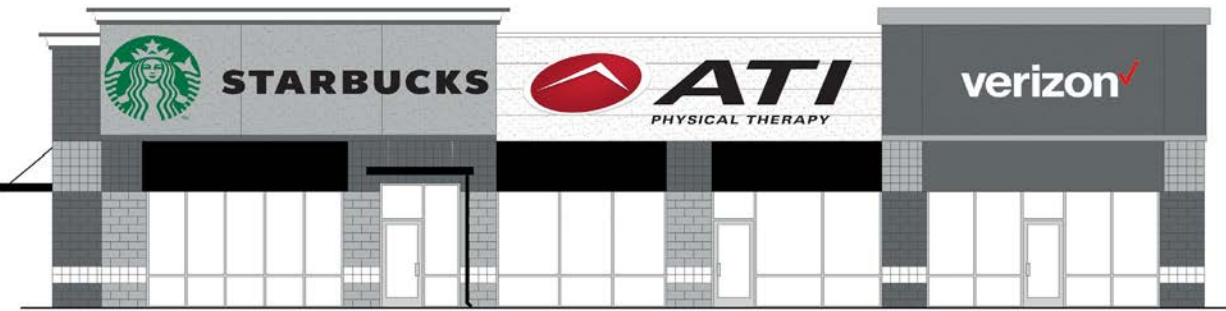
Site Plan

Aerial (Site)

Aerial (Market)



Lot 1:	Available OUTLOT	1 ACRE
Lot 2:	Huntington Shoppes	1.1 ACRE
Suite A	Starbucks	2,203 SF
Suite B	ATI Physical Therapy	2,400 SF
Suite C	Verizon	1,867 SF
Total GLA:		6,470 SF





HUNTINGTON SHOPPES

PRIME OUTLOT: 1 ACRE, fully improved, shovel ready

For Sale, Ground Lease, Build to Suit

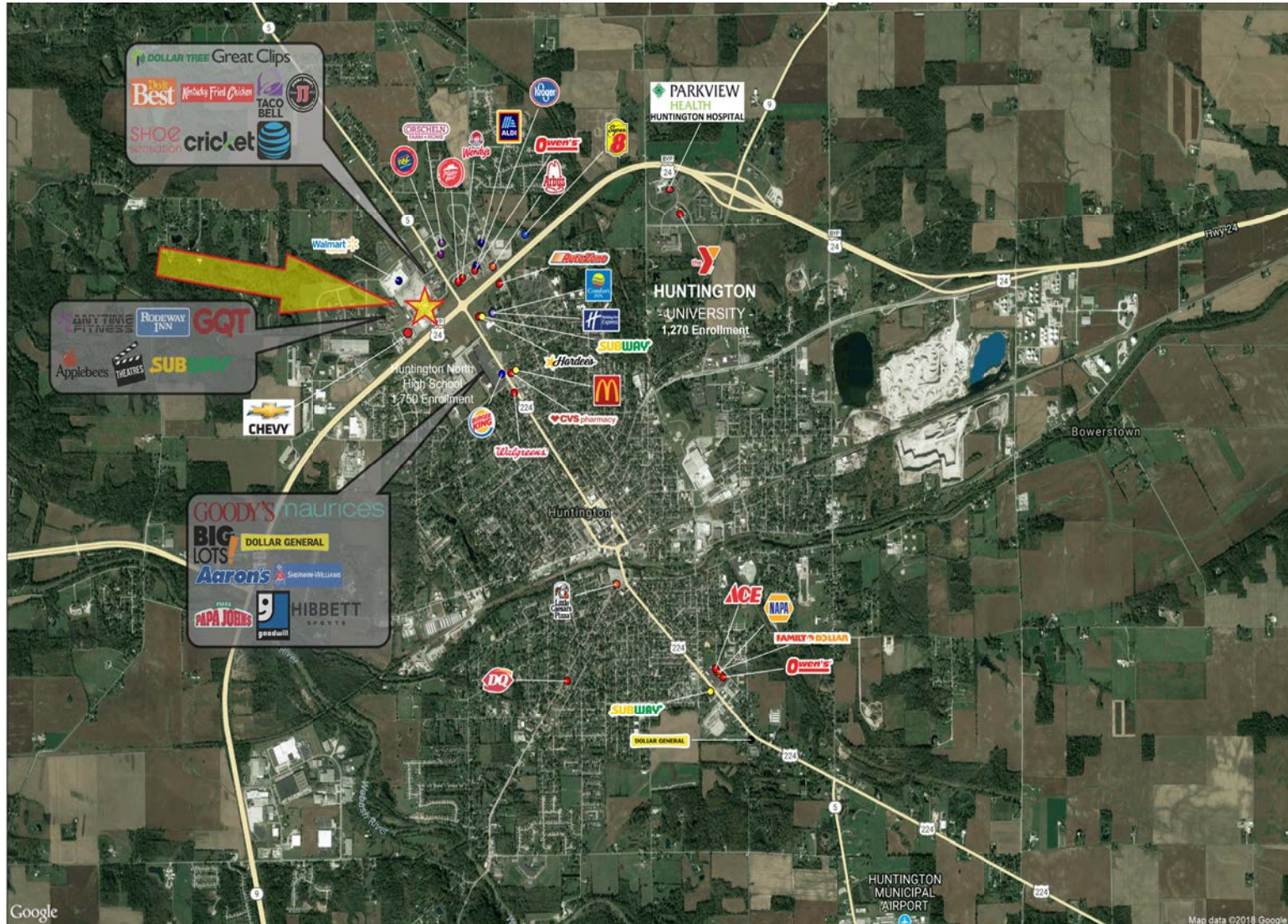
235 Hauenstein Rd, Huntington, IN 46750

Project Overview

Site Plan

Aerial (Site)

Aerial (Market)



Information within this brochure has been obtained from sources believed reliable, but we make no representations or warranties, expressed or implied, as to the accuracy of the information. Prospective tenant and tenant representatives must verify the information and bears all risk for any inaccuracies as it relates to property and market information.

FOR MORE INFORMATION
PLEASE CONTACT:

JAMISON DOWNS

T: 317-472-1800 E: Jamison@VeritasRealty.com

VR VERITAS
REALTY

A MEMBER OF
CHAINLINKS
RETAIL ADVISORS