

Prime Retail/Office Space on Monon Trail

+/- 1,886 SF AVAILABLE FOR LEASE | Broad Ripple



6311 E. Westfield Blvd., Indianapolis, IN 46220



PROPERTY HIGHLIGHTS:

- +/- 1,886 SF retail/office space for lease
- 1st floor location of River House apartments with 86 luxury units, Solidcore, and Gina's Juice Bar
- Excellent walkability with frontage along the Monon Trail
- Located in the heart of Broad Ripple Village surrounded by shops, restaurants, offices, apartments, and established neighborhoods

DEMOGRAPHICS



1 MILE



3 MILE



5 MILE

Population:	11,465	78,842	221,137
Households:	6,011	35,392	98,371
Daytime Pop:	7,175	50,000	188,931
Avg. HH Income:	\$157,326	\$145,237	\$109,383

CONTACT:

Amy Tharp

T: 317-472-1800

E: Amy@VeritasRealty.com

John Holloway

T: 317-472-1800

E: John@VeritasRealty.com

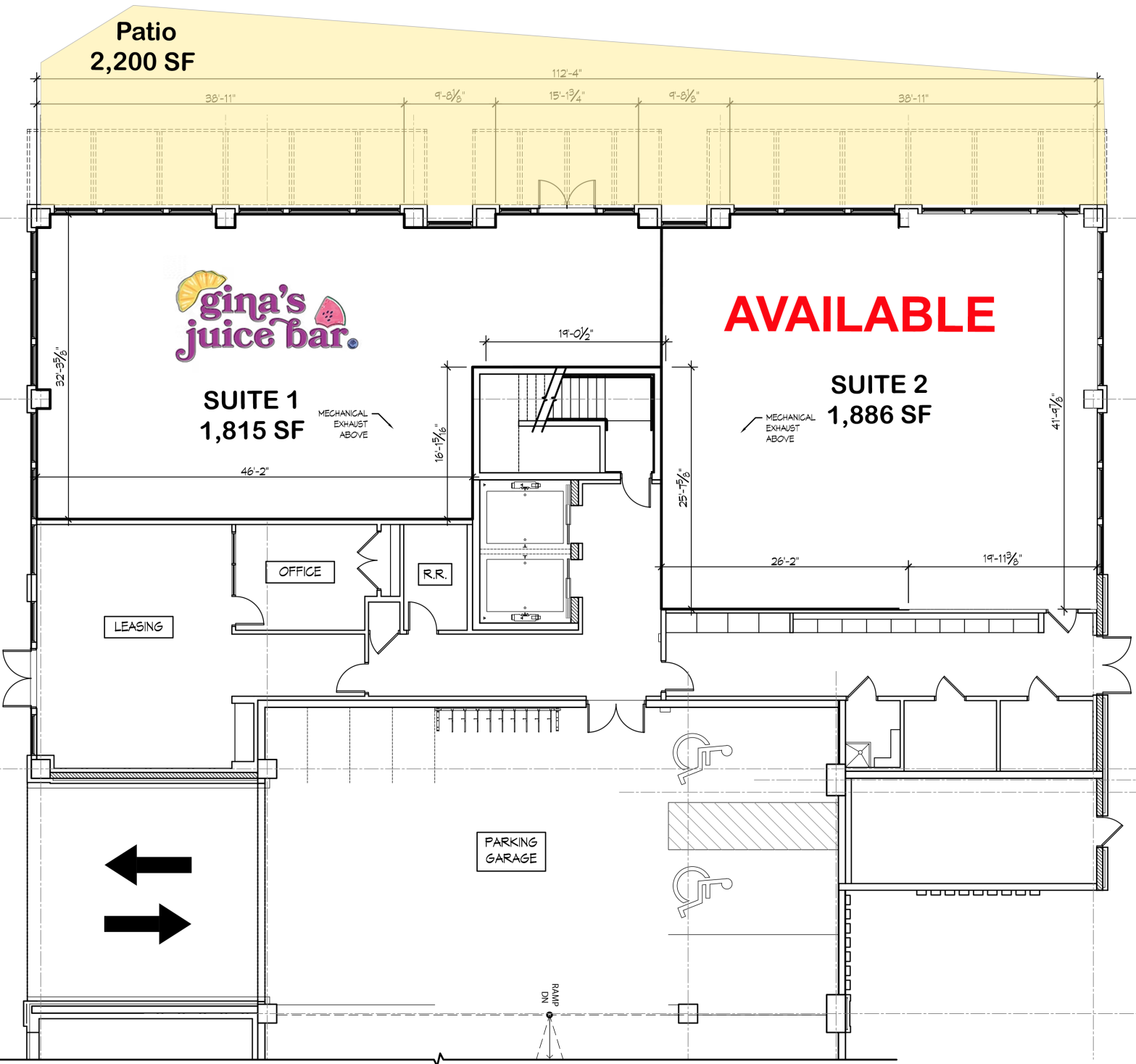
**FOR
LEASE**

www.VeritasRealty.com

Prime Retail/Office Space on Monon Trail

+/- 1,886 SF AVAILABLE FOR LEASE | Broad Ripple

SITE
PLAN



Prime Retail/Office Space on Monon Trail | Broad Ripple

+/- 1,886 SF AVAILABLE FOR LEASE

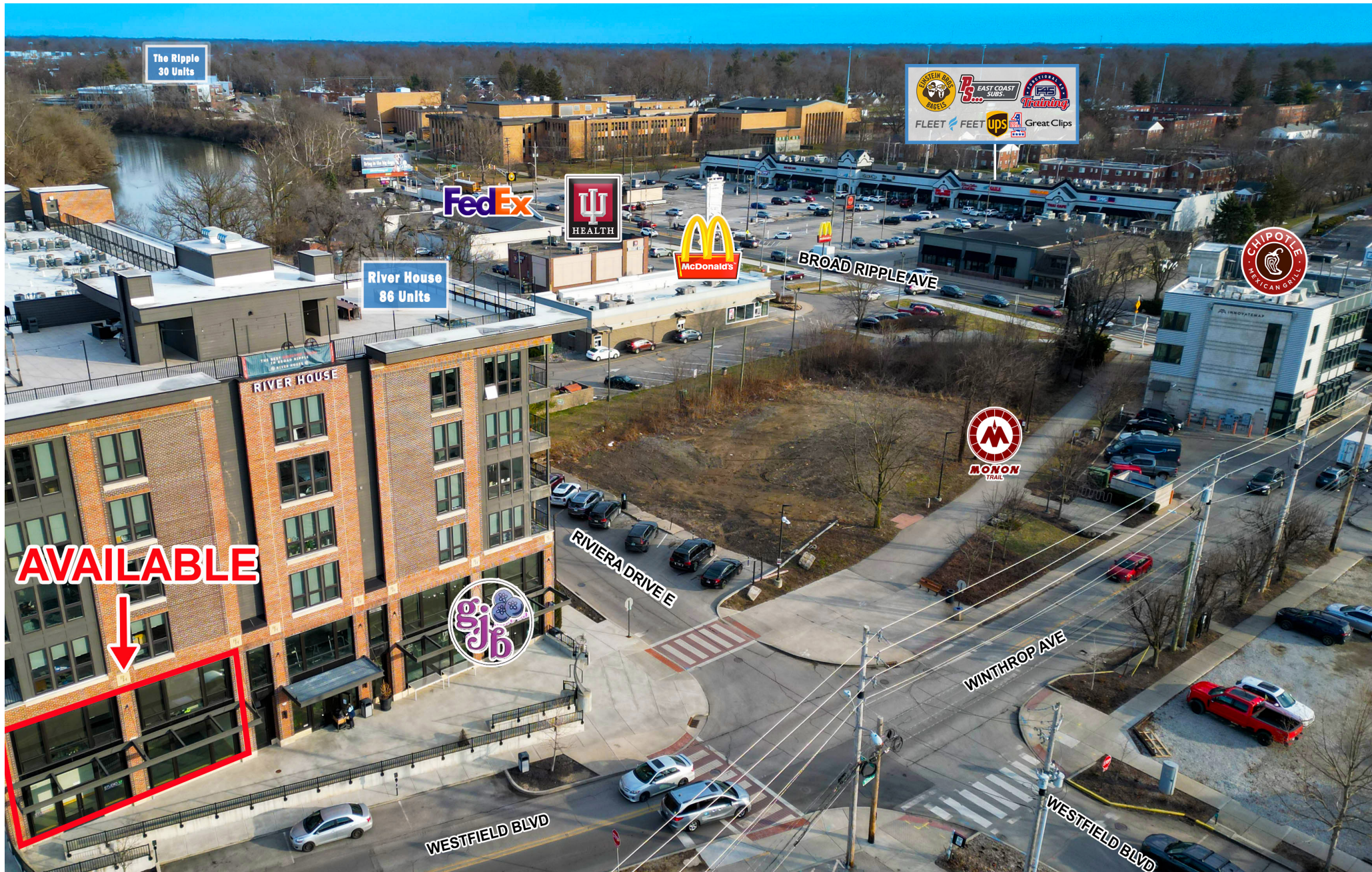
SITE
PHOTOS



Prime Retail/Office Space on Monon Trail | Broad Ripple

+/- 1,886 SF AVAILABLE FOR LEASE

SITE
PHOTOS



Prime Retail/Office Space on Monon Trail | Broad Ripple

+/- 1,886 SF AVAILABLE FOR LEASE

**SITE
PHOTOS**



**FOR
LEASE**

6311 E. Westfield Blvd., Indianapolis, IN 46220

CONTACT:

Amy Tharp

E: Amy@VeritasRealty.com

T: 317-472-1800

John Holloway

E: John@VeritasRealty.com

T: 317-472-1800

VERITAS
REALTY

www.VeritasRealty.com