

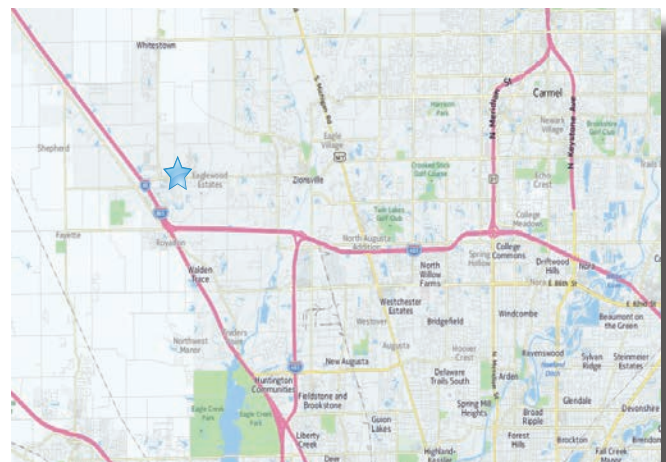
New Construction Retail Development Whitestown Pkwy, Whitestown, IN 10,500 SF Building - Spring 2017

7201 E Whitestown Pkwy, Whitestown, IN 46077



Property Highlights:

- 10,500 SF new construction planned for Spring 2017 delivery
- Whitestown Pkwy is a new and growing retail corridor anchored by Meijer and Lowe's serving the greater Zionsville & Whitestown communities
- Surrounded by significant housing growth of high-end housing and apartment communities
- Conveniently located near the Anson Development which is a 1,700 acre mixed-use community encompassing a master plan of 2,500+ residential units and 13 million SF of office, industrial, medical, hospitality and retail
- Heavy daytime traffic generated by Witham's medical facility and AllPoints at Anson Business Park



For more information contact:

Seth Biggerstaff

317-472-1800

Seth@VeritasRealty.com

Amy Winchell

317-472-1800

Amy@VeritasRealty.com

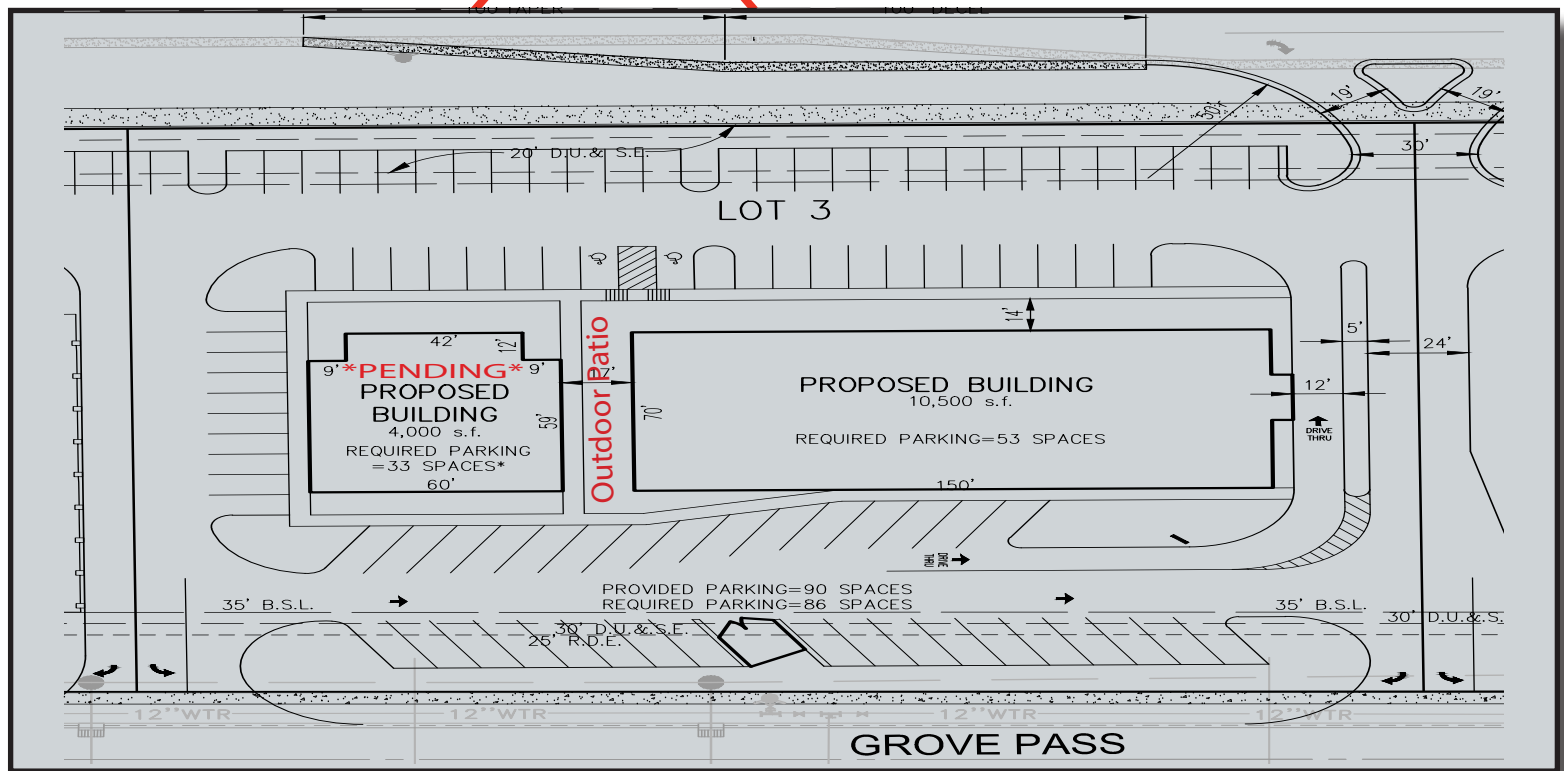
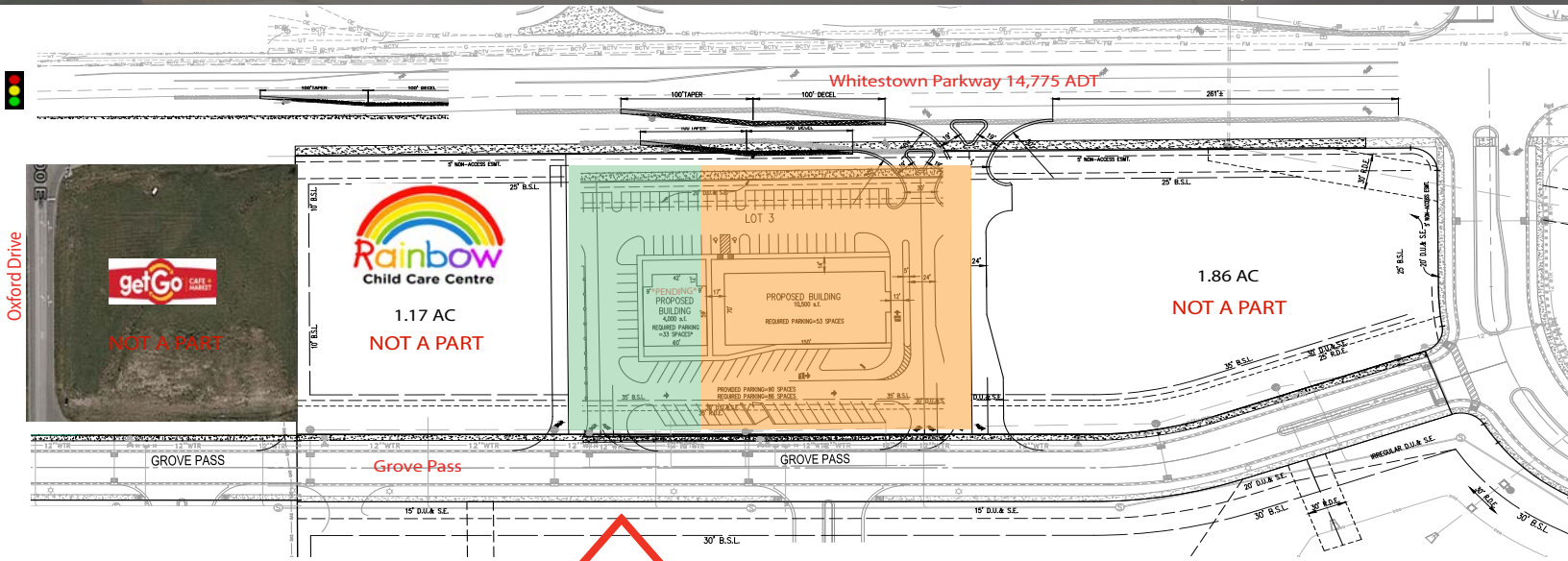
**VERITAS
REALTY**

A MEMBER OF
CHAINLINKS
RETAIL ADVISORS

6440 Westfield Blvd., Indianapolis, IN 46220 | ph. (317) 472-1800 - fax (317) 472-1802 | VeritasRealty.com

New Construction Retail Development Whitestown Pkwy, Whitestown, IN 10,500 SF Building - Spring 2017

7201 E Whitestown Pkwy, Whitestown, IN 46077



For more information contact:

Seth Biggerstaff

317-472-1800

Seth@VeritasRealty.com

Amy Winchell

317-472-1800

Amy@VeritasRealty.com

VERITAS
REALTY

6440 Westfield Blvd., Indianapolis, IN 46220 | ph. (317) 472-1800 - fax (317) 472-1802 | VeritasRealty.com

A MEMBER OF
CHAINLINKS
RETAIL ADVISORS

New Construction Retail Development Whitestown Pkwy, Whitestown, IN 10,500 SF Building - Spring 2017

7201 E Whitestown Pkwy, Whitestown, IN 46077



- 1,700 acre mixed-use community development
- Growing population with a recent increase of 2,500 residential units
- Witham's new state of the art 43,500 SF medical facility
- Creation of over 3,200 (& counting) employees at AllPoints at Anson Business Park including Amazon, Express Scripts, Weaver Popcorn, General Nutrition Company, Kenco Logistic Services

Retailers:

meijer

CVS
pharmacy



verizon



ANSON OVERALL MASTER PLAN



VERITAS
REALTY

For more information contact:

Seth Biggerstaff

317-472-1800

Seth@VeritasRealty.com

Amy Winchell

317-472-1800

Amy@VeritasRealty.com

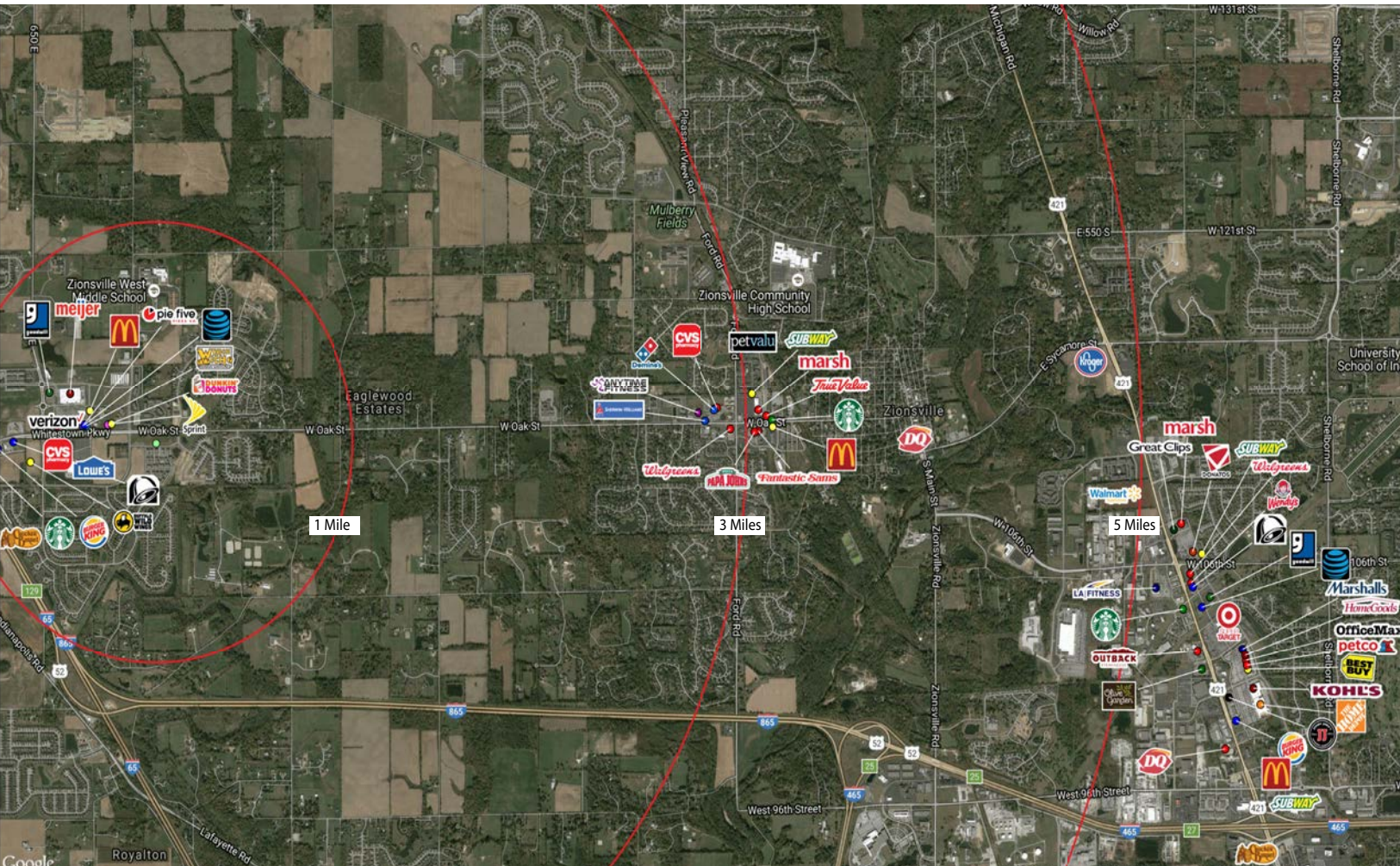


6440 Westfield Blvd., Indianapolis, IN 46220 | ph. (317) 472-1800 - fax (317) 472-1802 | VeritasRealty.com

New Construction Retail Development Whitestown Pkwy, Whitestown, IN 10,500 SF Building - Spring 2017

7201 E Whitestown Pkwy, Whitestown, IN 46077

Market Aerial



| 2016 DEMOGRAPHICS | 1 miles | 3 miles | 5 miles | 7 miles |
|---------------------------------|-----------|-----------|-----------|-----------|
| Population | 4,398 | 19,819 | 38,838 | 88,844 |
| Population Growth % (2010-2016) | 60.48% | 29.66% | 20.49% | 16.33% |
| Households | 1,496 | 6,685 | 13,886 | 32,581 |
| Avg. HH \$ | \$139,415 | \$150,602 | \$140,927 | \$120,984 |



For more information contact:

Seth Biggerstaff

317-472-1800

Seth@VeritasRealty.com

Amy Winchell

317-472-1800

Amy@VeritasRealty.com



6440 Westfield Blvd., Indianapolis, IN 46220 | ph. (317) 472-1800 - fax (317) 472-1802 | VeritasRealty.com