

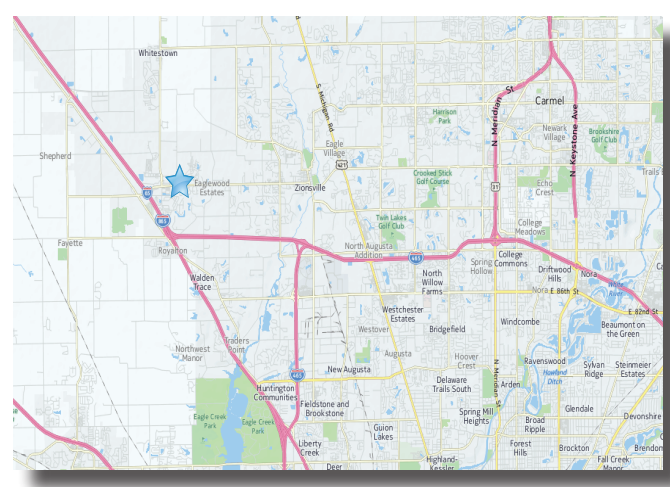
New Construction Retail Development Whitestown Pkwy, Whitestown, IN 10,500 SF Building - Spring 2017

7201 E Whitestown Pkwy, Whitestown, IN 46077



Property Highlights:

- 10,500 SF new construction planned for Spring 2017 delivery
- Whitestown Pkwy is a new and growing retail corridor anchored by Meijer and Lowe's serving the greater Zionsville & Whitestown communities
- Surrounded by significant housing growth of high-end housing and apartment communities
- Conveniently located near the Anson Development which is a 1,700 acre mixed-use community encompassing a master plan of 2,500+ residential units and 13 million SF of office, industrial, medical, hospitality and retail
- Heavy daytime traffic generated by Witham's medical facility and AllPoints at Anson Business Park



For more information contact:

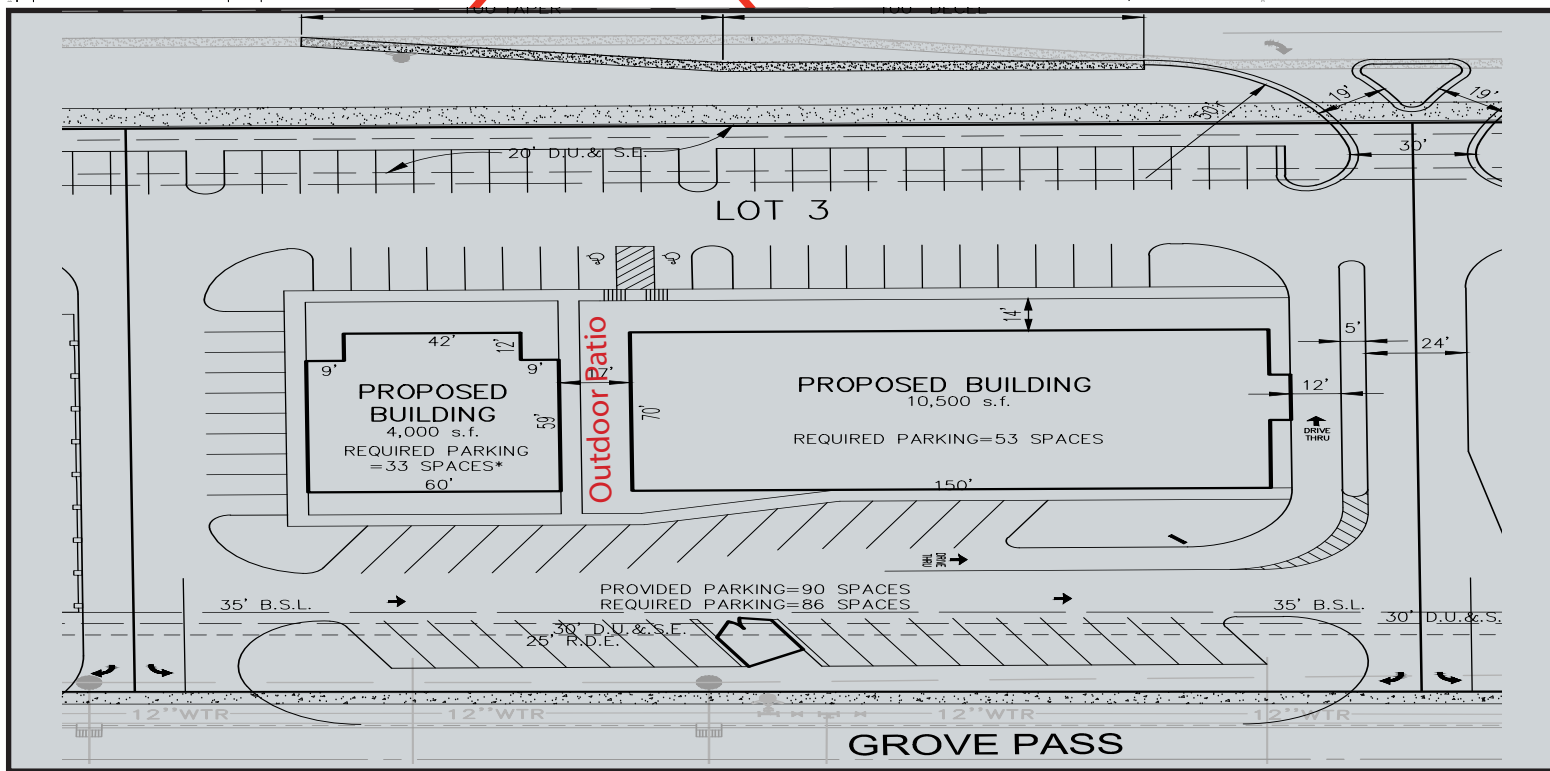
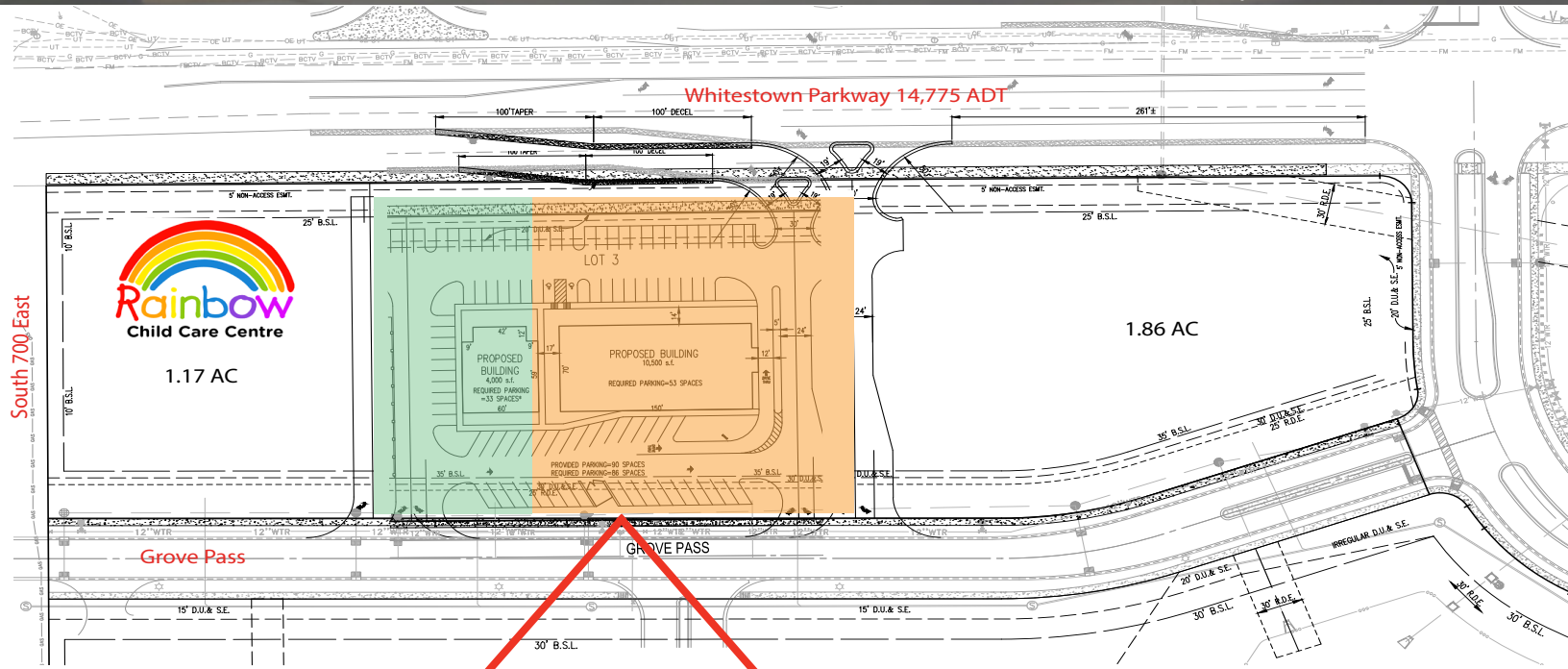
Seth Biggerstaff
317-472-1800
seth@veritasrealty.com

Amy Winchell
317-472-1800
amy@veritasrealty.com



New Construction Retail Development Whitestown Pkwy, Whitestown, IN 10,500 SF Building - Spring 2017

7201 E Whitestown Pkwy, Whitestown, IN 46077



For more information contact:

Seth Biggerstaff

317-472-1800

seth@veritasrealty.com

Amy Winchell

317-472-1800

amy@veritasrealty.com

**VERITAS
REALTY**

930 E 66th St - Indianapolis, IN 46220 - ph. (317) 472-1800 - fax (317) 472-1802 - www.veritasrealty.com



New Construction Retail Development Whitestown Pkwy, Whitestown, IN 10,500 SF Building - Spring 2017

7201 E Whitestown Pkwy, Whitestown, IN 46077

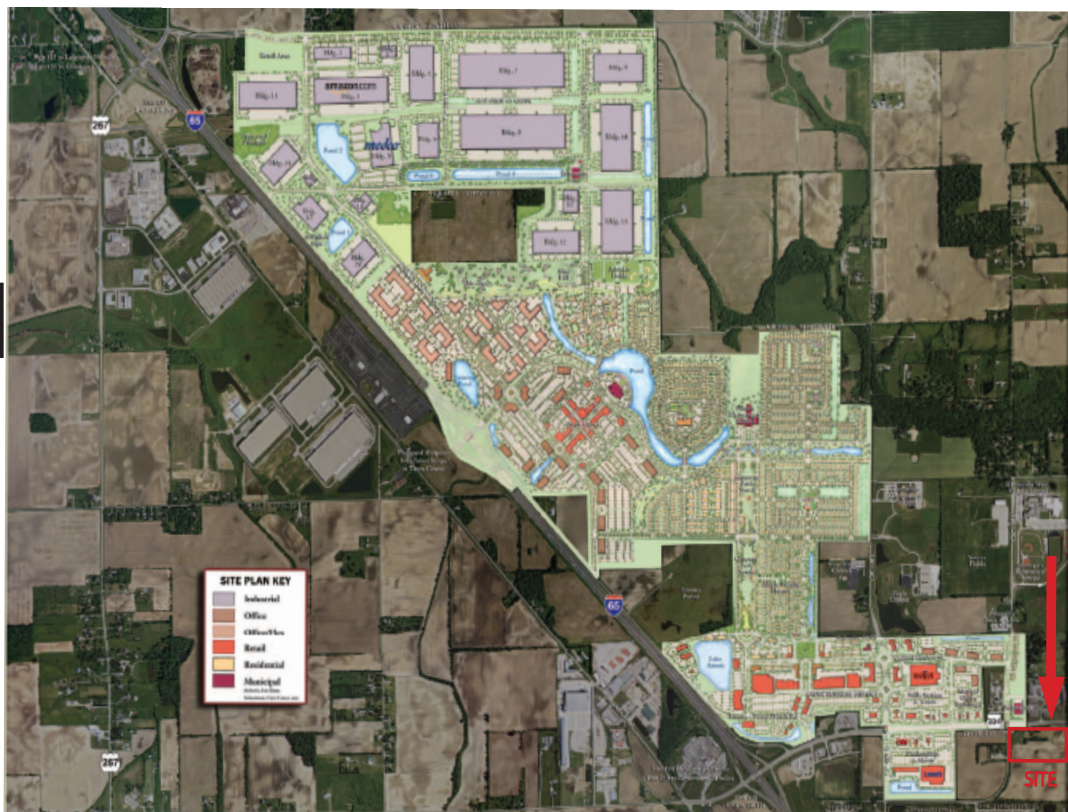


- 1,700 acre mixed-use community development
- Growing population with a recent increase of 2,500 residential units
- Witham's new state of the art 43,500 SF medical facility
- Creation of over 3,200 (& counting) employees at AllPoints at Anson Business Park including Amazon, Express Scripts, Weaver Popcorn, General Nutrition Company, Kenco Logistic Services

Retailers:



ANSON OVERALL MASTER PLAN



For more information contact:

Seth Biggerstaff

317-472-1800

seth@veritasrealty.com

Amy Winchell

317-472-1800

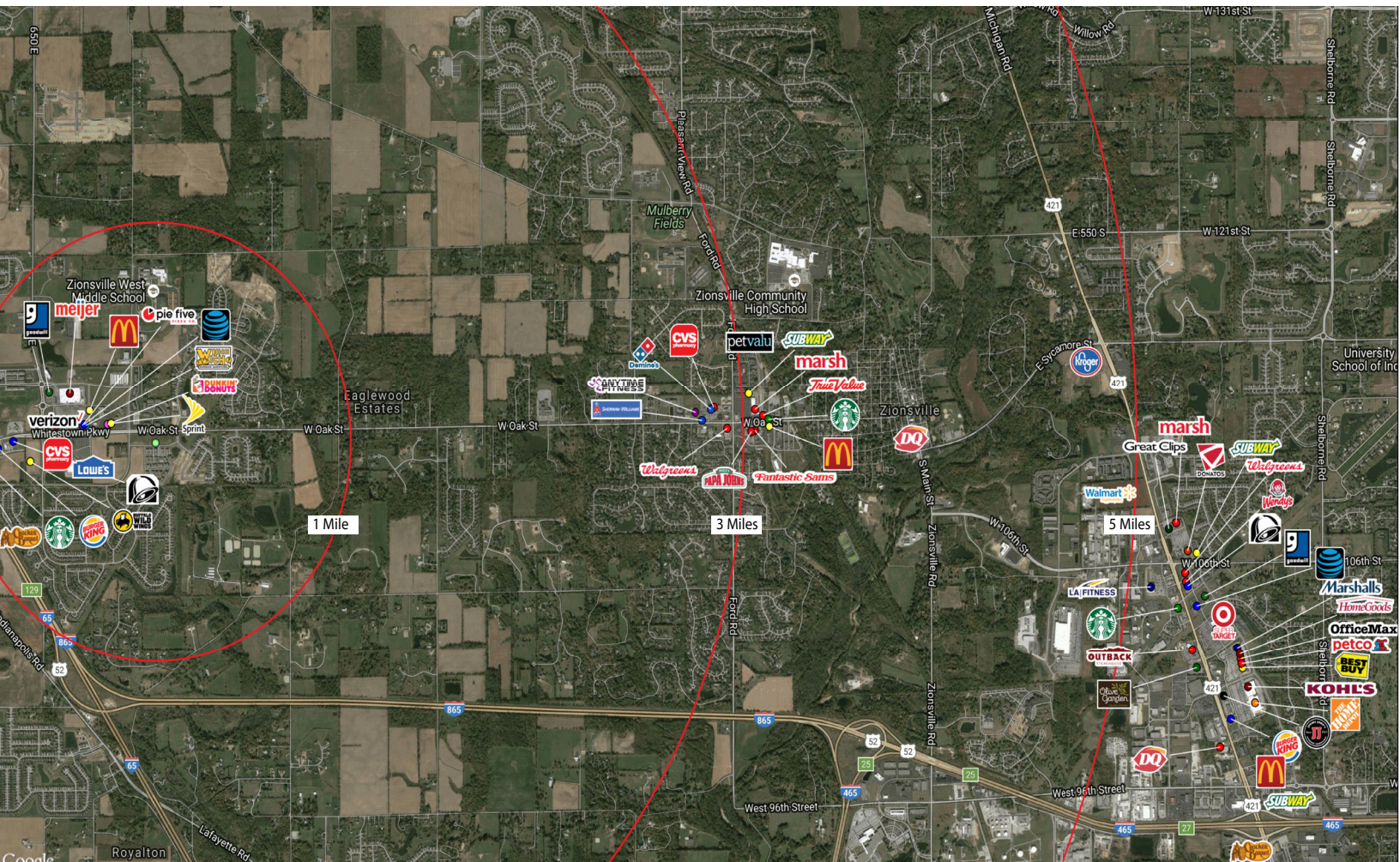
amy@veritasrealty.com



New Construction Retail Development Whitestown Pkwy, Whitestown, IN 10,500 SF Building - Spring 2017

7201 E Whitestown Pkwy, Whitestown, IN 46077

Market Aerial



2016 DEMOGRAPHICS	1 miles	3 miles	5 miles	7 miles
Population	4,398	19,819	38,838	88,844
Population Growth % (2010-2016)	60.48%	29.66%	20.49%	16.33%
Households	1,496	6,685	13,886	32,581
Avg. HH \$	\$139,415	\$150,602	\$140,927	\$120,984



**VERITAS
REALTY**

For more information contact:

Seth Biggerstaff

317-472-1800

seth@veritasrealty.com

Amy Winchell

317-472-1800

amy@veritasrealty.com

