

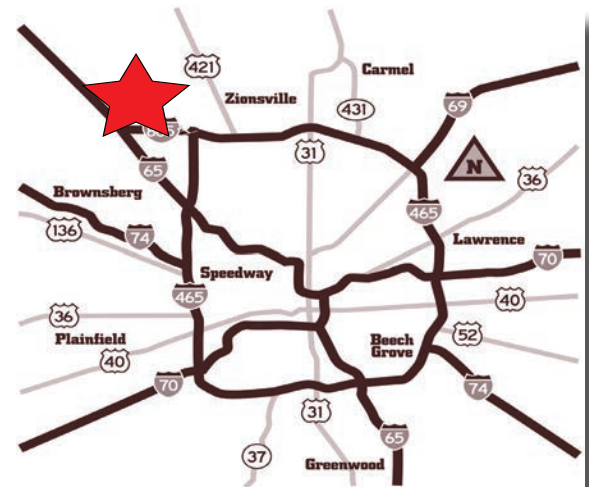
# New Construction Retail Development Whitestown Pkwy & Maple Grove Pass, Whitestown, IN 10,500 SF Building - Fall 2017

7117 E Whitestown Pkwy, Whitestown, IN 46077



## Property Highlights:

- 10,500 SF new construction planned for Fall 2017 delivery
- Whitestown Pkwy is a new and growing retail corridor anchored by Meijer and Lowe's serving the greater Zionsville & Whitestown communities
- Surrounded by significant housing growth of high-end single-family housing
- Conveniently located near the Anson Development which is a 1,700 acre mixed-use community encompassing a master plan of 2,500+ residential units and 13 million SF of office, industrial, medical, hospitality and retail
- Heavy daytime traffic generated by Witham's medical facility and AllPoints at Anson Business Park



**VERITAS  
REALTY**

### For more information contact:

Seth Biggerstaff

317-472-1800

Seth@VeritasRealty.com

Amy Winchell

317-472-1800

Amy@VeritasRealty.com

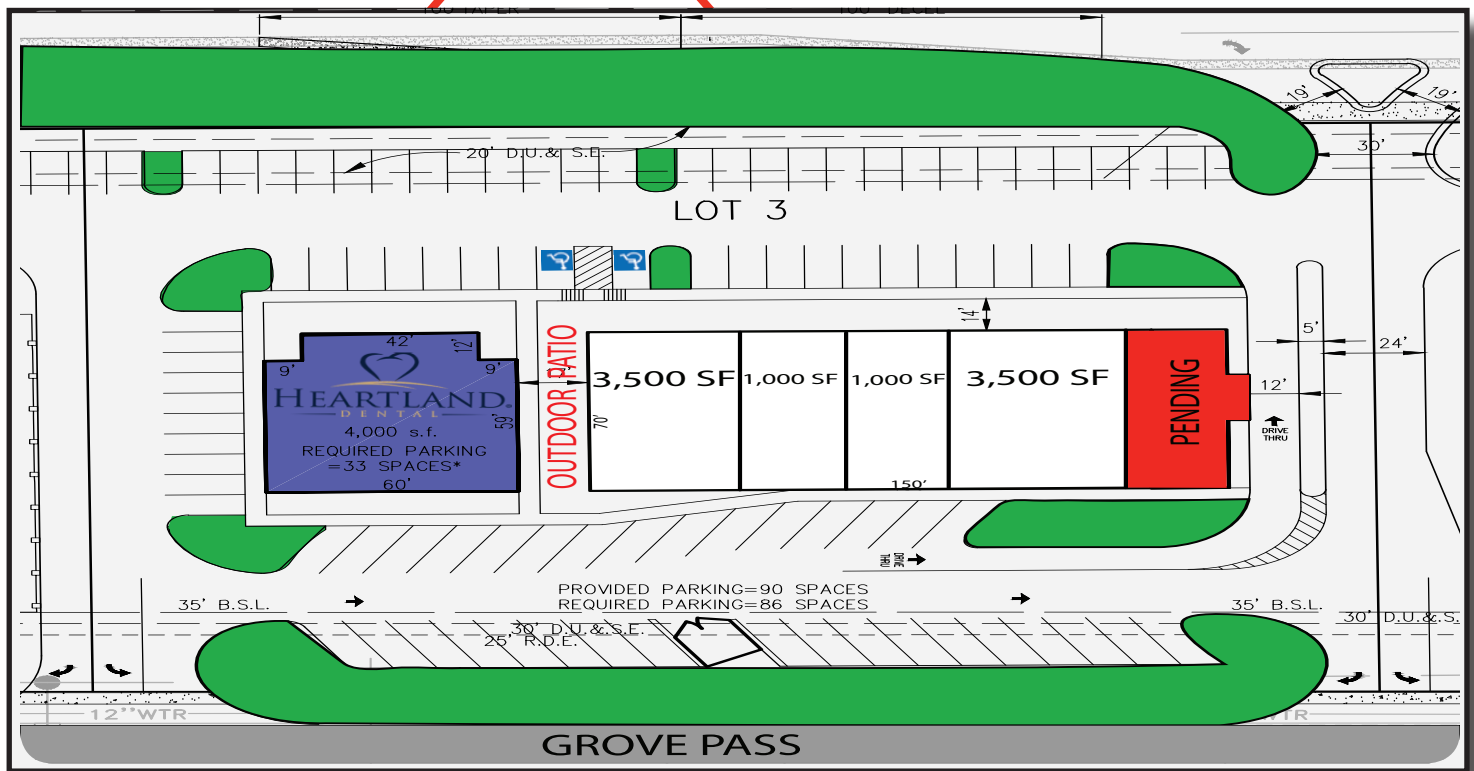
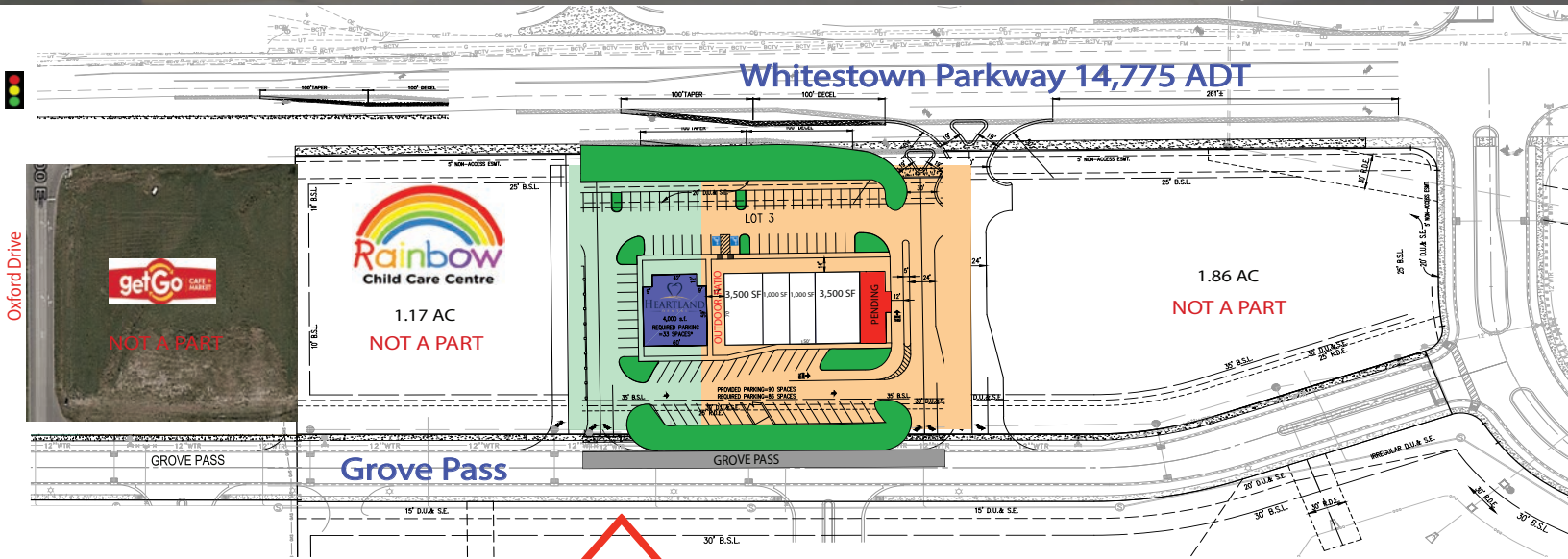
A MEMBER OF  
**CHAINLINKS**  
RETAIL ADVISORS

6440 Westfield Blvd., Indianapolis, IN 46220 | ph. (317) 472-1800 - fax (317) 472-1802 | VeritasRealty.com



# New Construction Retail Development Whitestown Pkwy & Maple Grove Pass, Whitestown, IN 10,500 SF Building - Fall 2017

7117 E Whitestown Pkwy, Whitestown, IN 46077



**VERITAS  
REALTY**

For more information contact:

Seth Biggerstaff

317-472-1800

Seth@VeritasRealty.com

Amy Winchell

317-472-1800

Amy@VeritasRealty.com



6440 Westfield Blvd., Indianapolis, IN 46220 | ph. (317) 472-1800 - fax (317) 472-1802 | VeritasRealty.com

# New Construction Retail Development

## Whitestown Pkwy & Maple Grove Pass, Whitestown, IN

### 10,500 SF Building - Fall 2017

7117 E Whitestown Pkwy, Whitestown, IN 46077



- 1,700 acre mixed-use community development
- Growing population with a recent increase of 2,500 residential units
- Witham's new state of the art 43,500 SF medical facility
- Creation of over 3,200 (& counting) employees at AllPoints at Anson Business Park including Amazon, Express Scripts, Weaver Popcorn, General Nutrition Company, Kenco Logistic Services

## Retailers:

**meijer**

**CVS**  
pharmacy



**verizon**



## ANSON OVERALL MASTER PLAN



**VERITAS**  
REALTY

For more information contact:

Seth Biggerstaff

317-472-1800

Seth@VeritasRealty.com

Amy Winchell

317-472-1800

Amy@VeritasRealty.com



6440 Westfield Blvd., Indianapolis, IN 46220 | ph. (317) 472-1800 - fax (317) 472-1802 | VeritasRealty.com



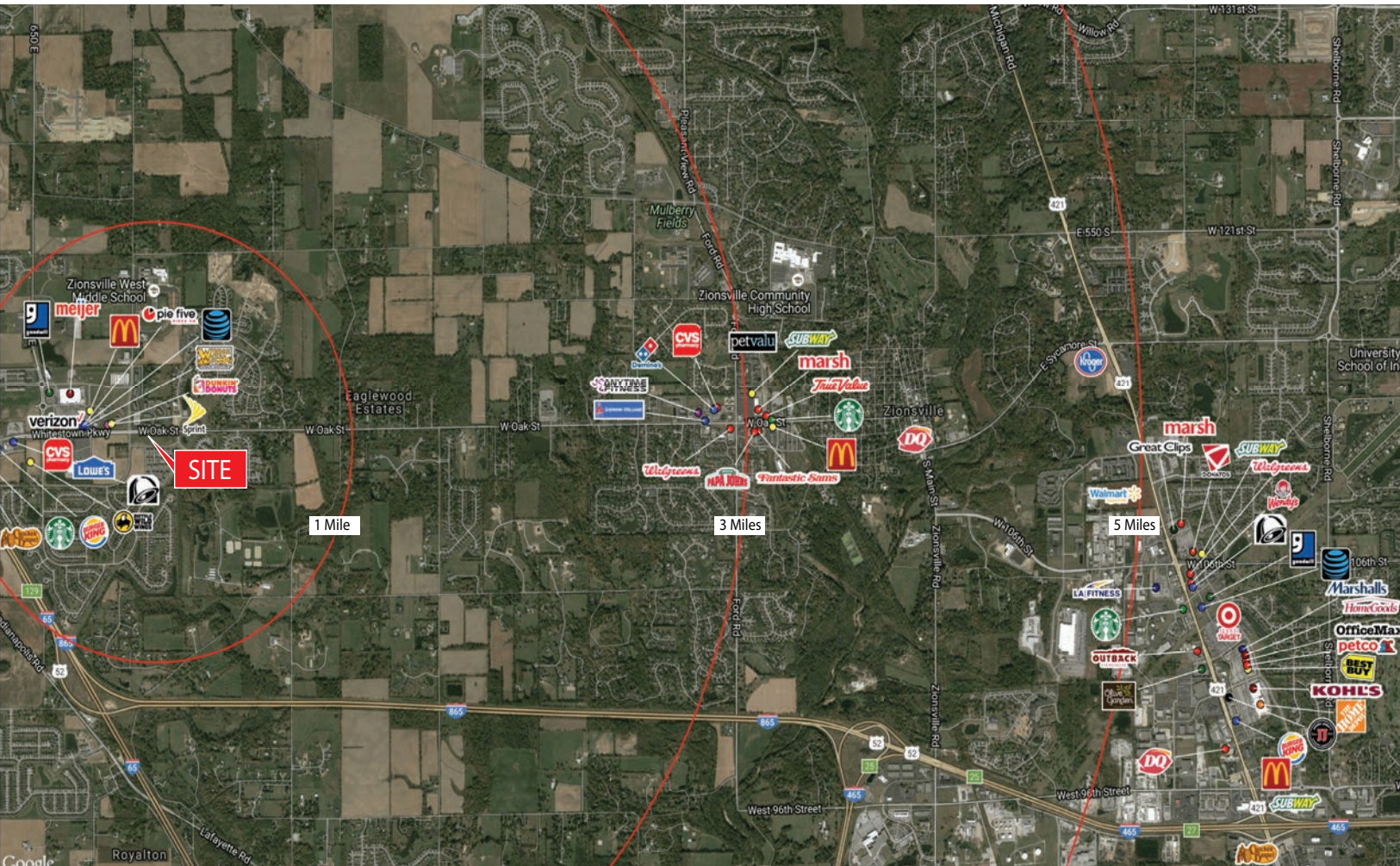
# New Construction Retail Development

## Whitestown Pkwy & Maple Grove Pass, Whitestown, IN

### 10,500 SF Building - Fall 2017

7117 E Whitestown Pkwy, Whitestown, IN 46077

## Market Aerial



2017 DEMOGRAPHICS	1 miles	3 miles	5 miles	7 miles
Population	5,017	19,819	38,838	88,844
Population Growth % (2010-2017)	76.69%	29.66%	20.49%	16.33%
Households	1,609	6,685	13,886	32,581
Avg. HH Income	\$139,415	\$150,602	\$140,927	\$120,984



For more information contact:

Seth Biggerstaff

317-472-1800

Seth@VeritasRealty.com

Amy Winchell

317-472-1800

Amy@VeritasRealty.com



6440 Westfield Blvd., Indianapolis, IN 46220 | ph. (317) 472-1800 - fax (317) 472-1802 | VeritasRealty.com