

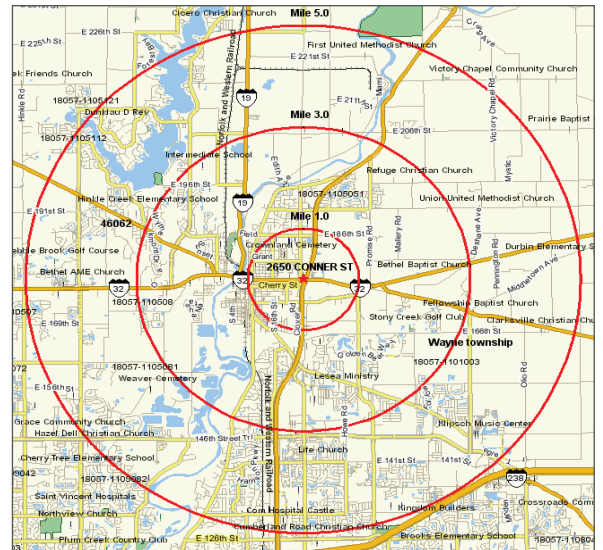
Fully Leased Noblesville, IN

2650 Conner St, Noblesville, IN



Property Highlights:

- Excellent exposure to a combined 41,437 cars per day
- Located at the northwest corner of the high-traffic lighted intersection of SR 37 & SR 32/Conner St
- Excellent retail trade area with nation retailers including Home Depot, Lowe's, Office Depot, Wal-Mart, Meijer, LA Fitness, and more
- Noblesville was selected as the "Indiana Community of the Year" in 2012
- Within a 5-mile radius, the population is over 95,000 and the average household income is over \$108,000



Demographics	1 mile	3 mile	5 mile
Estimated Population	5,772	38,812	95,785
Households	2,340	14,000	34,460
Est. Avg. HH Income	\$76,024	\$100,816	\$108,035

FOR MORE INFORMATION
PLEASE CONTACT:

SETH BIGGERSTAFF
T: 317-472-1800
E: Seth@VeritasRealty.com

ANDREW DEMAREE
T: 317-472-1800
E: ADemaree@VeritasRealty.com



Fully Leased Noblesville, IN

2650 Conner St, Noblesville, IN



Tenant	Size
Cricket Wireless	1,040 SF
Priority 1 Medical	1,560 SF
Penn Station	1,950 SF
Batteries Plus Bulbs	1,200 SF
Artisan Vapor	1,200 SF
TOTAL GLA:	6,950 SF

FOR MORE INFORMATION
PLEASE CONTACT:

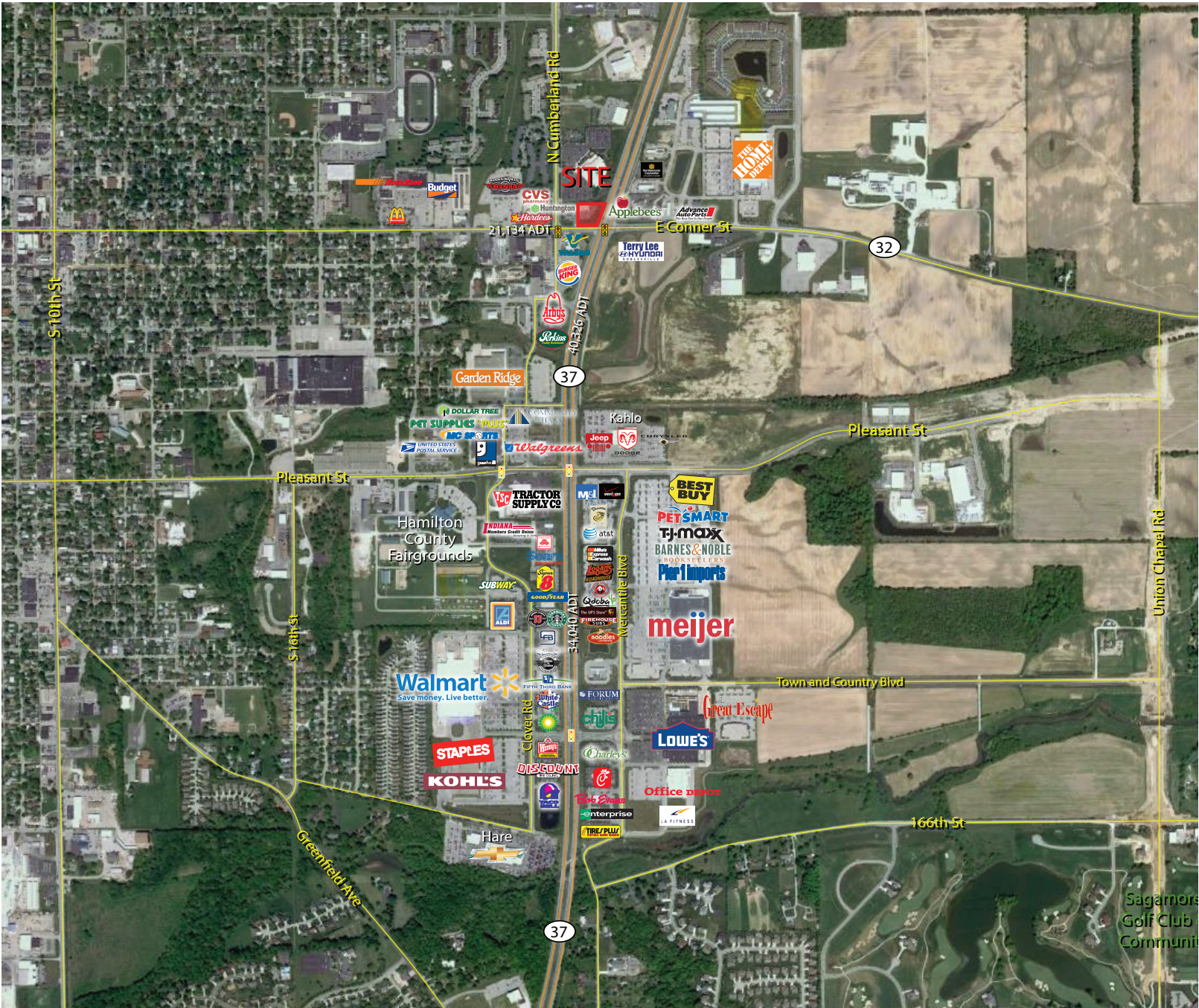
SETH BIGGERSTAFF
T: 317-472-1800
E: Seth@VeritasRealty.com

ANDREW DEMAREE
T: 317-472-1800
E: ADemaree@VeritasRealty.com



Fully Leased Noblesville, IN

2650 Conner St, Noblesville, IN



FOR MORE INFORMATION
PLEASE CONTACT:

SETH BIGGERSTAFF
T: 317-472-1800
E: Seth@VeritasRealty.com

ANDREW DEMAREE
T: 317-472-1800
E: ADemaree@VeritasRealty.com

