

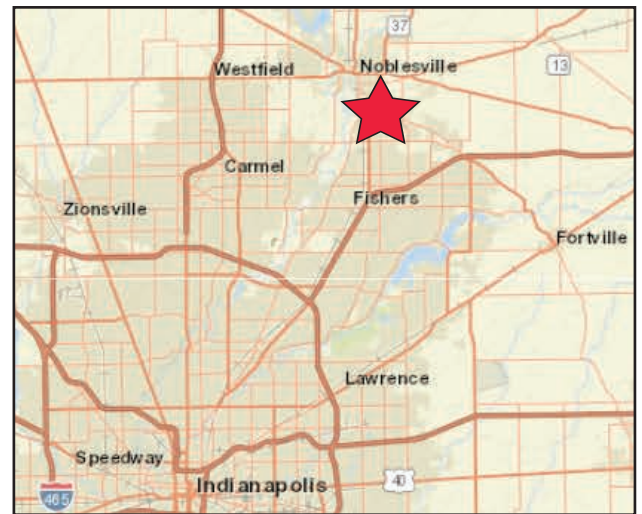
# 1,560 SF Available Noblesville Shoppes | Noblesville, IN

2650 Conner St, Noblesville, IN 46060



## Property Highlights:

- 1,560 SF former chiropractic space available for lease
- Excellent exposure to a combined 61,437 cars per day
- Located at the northwest corner of the high-traffic lighted intersection of SR 37 & SR 32/Conner St
- Excellent retail trade area with nation retailers including Home Depot, Lowe's, Office Depot, Wal-Mart, Meijer, LA Fitness, and more
- Noblesville was selected as the "Indiana Community of the Year" in 2012
- Within a 5-mile radius, the population is over 95,000 and the average household income is over \$108,000



Demographics	1 mile	3 mile	5 mile
Estimated Population	5,772	38,812	95,785
Households	2,340	14,000	34,460
Est. Avg. HH Income	\$76,024	\$100,816	\$108,035

FOR MORE INFORMATION  
PLEASE CONTACT:

**SETH BIGGERSTAFF**  
T: 317-472-1800  
E: Seth@VeritasRealty.com

**ANDREW DEMAREE**  
T: 317-472-1800  
E: ADemaree@VeritasRealty.com



# 1,560 SF Available

## Noblesville Shoppes | Noblesville, IN

2650 Conner St, Noblesville, IN 46060



Tenant	Size
Cricket Wireless	1,040 SF
<b>Former Chiropractor</b>	<b>1,560 SF (24' x 65')</b>
Penn Station	1,950 SF
Batteries Plus Bulbs	1,200 SF
Artisan Vapor	1,200 SF
<b>TOTAL GLA:</b>	<b>6,950 SF</b>

FOR MORE INFORMATION  
PLEASE CONTACT:

**SETH BIGGERSTAFF**  
T: 317-472-1800  
E: Seth@VeritasRealty.com

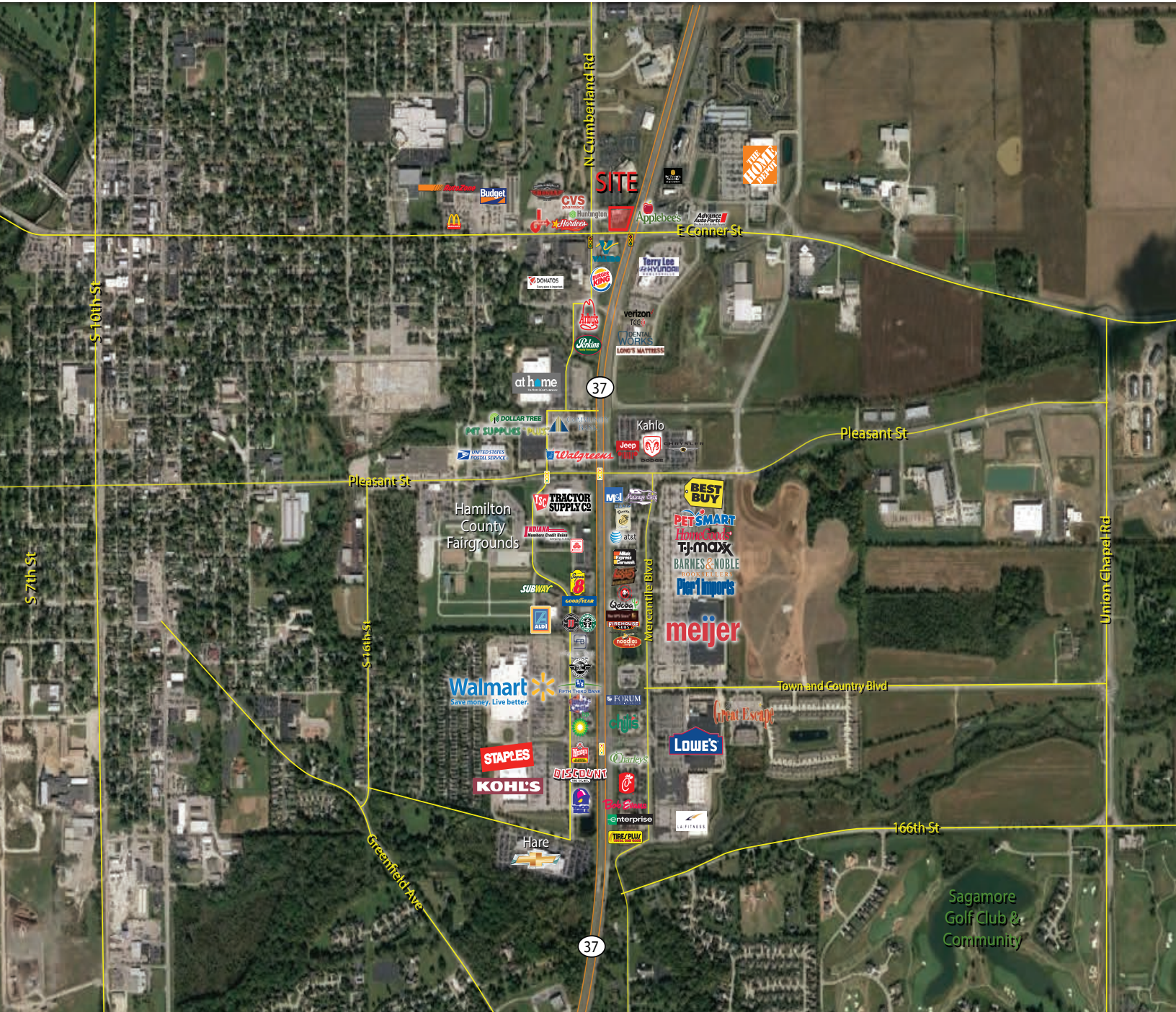
**ANDREW DEMAREE**  
T: 317-472-1800  
E: ADemaree@VeritasRealty.com



# 1,560 SF Available

## Noblesville Shoppes | Noblesville, IN

2650 Conner St, Noblesville, IN 46060



Information within this brochure has been obtained from sources believed reliable, but we make no representations or warranties, expressed or implied, as to the accuracy of the information. Prospective tenant and tenant representatives must verify the information and bears all risk for any inaccuracies as it relates to property and market information.

**FOR MORE INFORMATION  
PLEASE CONTACT:**

**SETH BIGGERSTAFF**  
T: 317-472-1800  
E: Seth@VeritasRealty.com

**ANDREW DEMAREE**  
T: 317-472-1800  
E: ADemaree@VeritasRealty.com

