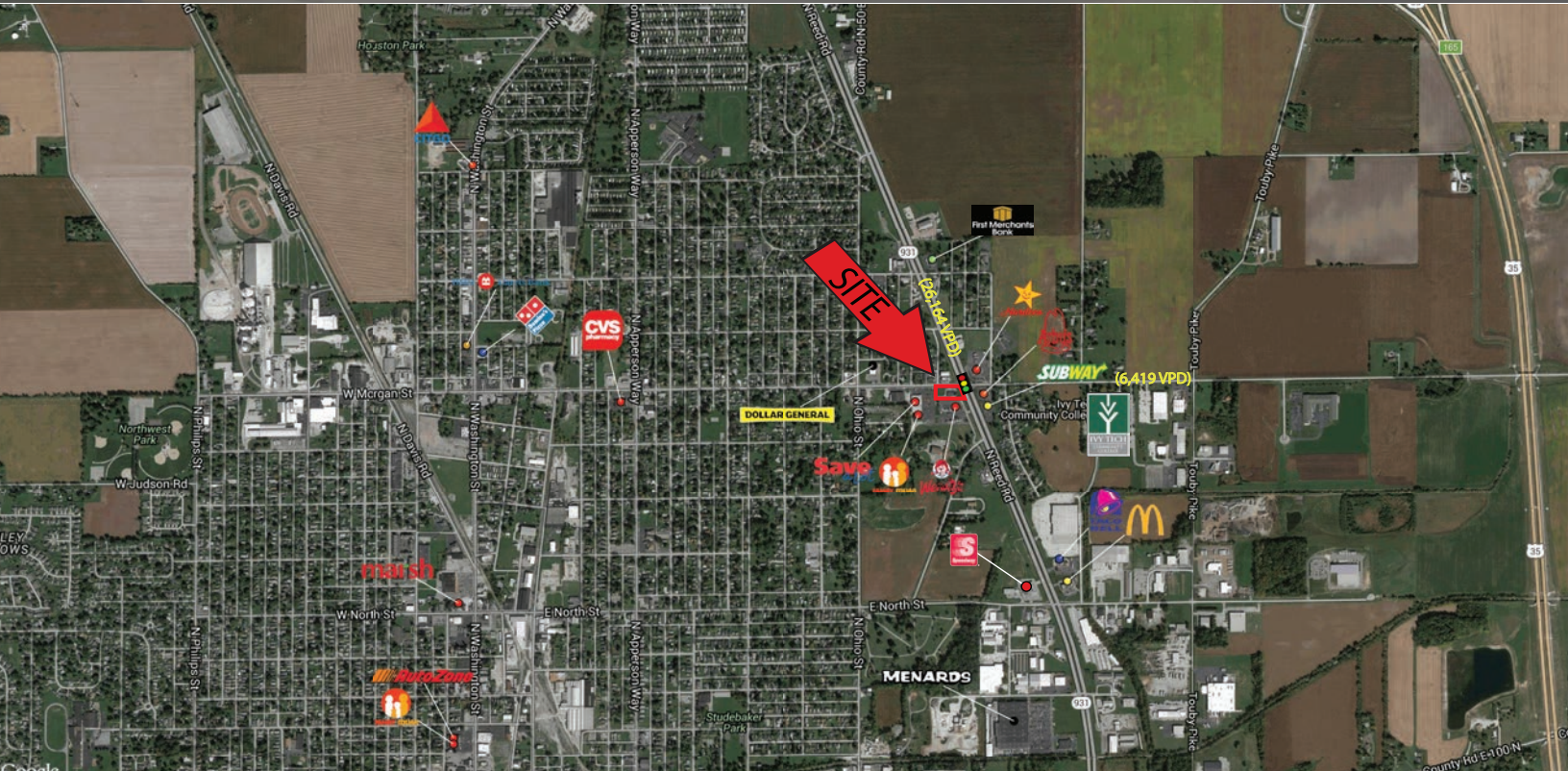


Retail Space Available

Shoppes at 931 & Morgan

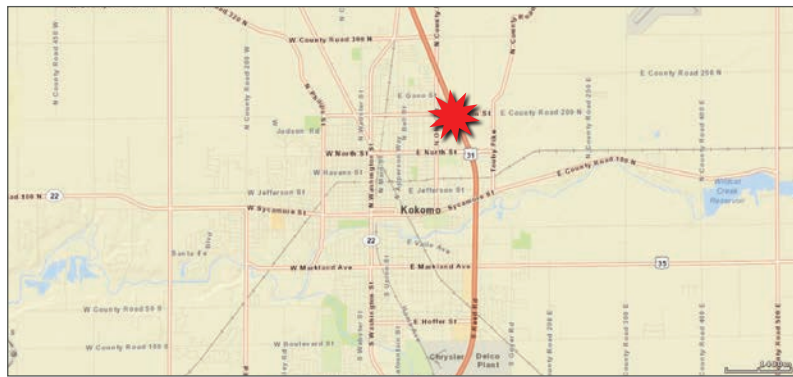
1,188 - 2,808 SF

1425 E Morgan St, Kokomo, IN 46901



Property Highlights:

- 1,188 - 2,808 SF available for lease with ample parking and large pylon sign
- Highly visible property located at the SW corner of SR 931 and Morgan St
- Hard corner site that is accessible and exposed to over 32,500 vehicles per day
- Property positioned as an outlot in front of Save-A-Lot and Family Dollar
- Area retailers include: Wendy's, Arby's, Hardee's, Subway, First Farmers Bank, and more



Demographics	3 mile	5 mile	10 mile
Estimated Population	32,359	56,826	89,076
Est. Avg. HH Income	\$46,897	\$55,698	\$62,728
Traffic Counts			
SR 931 / N Reed Rd	26,164 ADT		
E Morgan St	6,419 ADT		



**VERITAS
REALTY**

For more information contact:

Seth Biggerstaff

317-472-1800

Seth@veritasrealty.com

Amy Tharp

317-472-1800

Amy@veritasrealty.com

Andrew Demaree

317-472-1800

ADemaree@veritasrealty.com



6440 Westfield Blvd., Indianapolis, IN 46220 | ph. (317) 472-1800 - fax (317) 472-1802 | VeritasRealty.com

Retail Space Available

Shoppes at 931 & Morgan

1,188 - 2,808 SF

1425 E Morgan St, Kokomo, IN 46901



**VERITAS
REALTY**

For more information contact:

Seth Biggerstaff

317-472-1800

Seth@veritasrealty.com

Amy Tharp

317-472-1800

Amy@veritasrealty.com

Andrew Demaree

317-472-1800

ADemaree@veritasrealty.com

A MEMBER OF
CHAINLINKS
RETAIL ADVISORS

6440 Westfield Blvd., Indianapolis, IN 46220 | ph. (317) 472-1800 - fax (317) 472-1802 | VeritasRealty.com

Retail Space Available

Shoppes at 931 & Morgan

1,188 - 2,808 SF

1425 E Morgan St, Kokomo, IN 46901



Site Plan



For more information contact:

Seth Biggerstaff

317-472-1800

Seth@veritasrealty.com

Amy Tharp

317-472-1800

Amy@veritasrealty.com

Andrew Demaree

317-472-1800

ADemaree@veritasrealty.com



6440 Westfield Blvd., Indianapolis, IN 46220 | ph. (317) 472-1800 - fax (317) 472-1802 | VeritasRealty.com