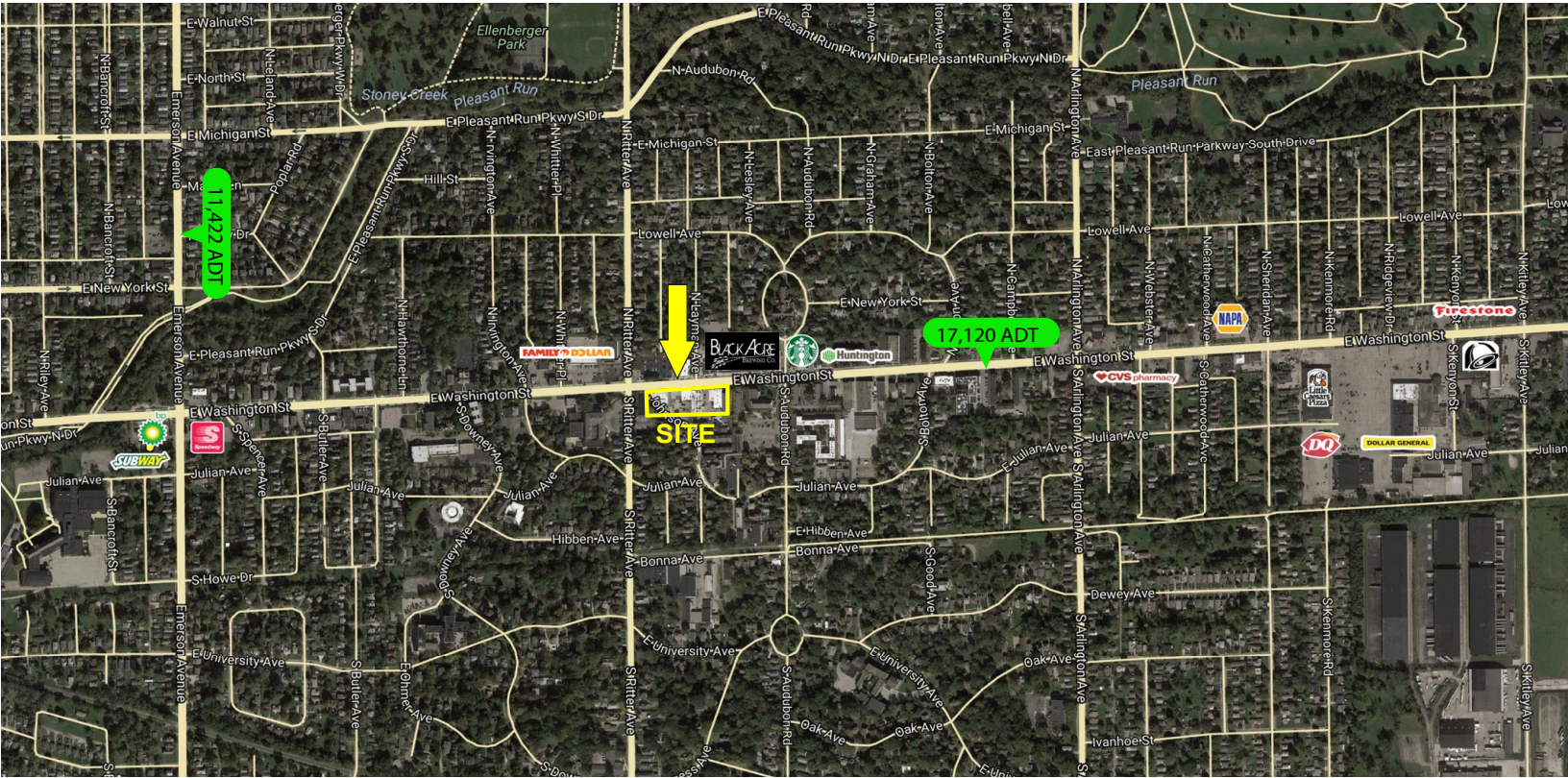


# IRVINGTON SHOPS

1,600 - 3,200 SF AVAILABLE | FOR LEASE

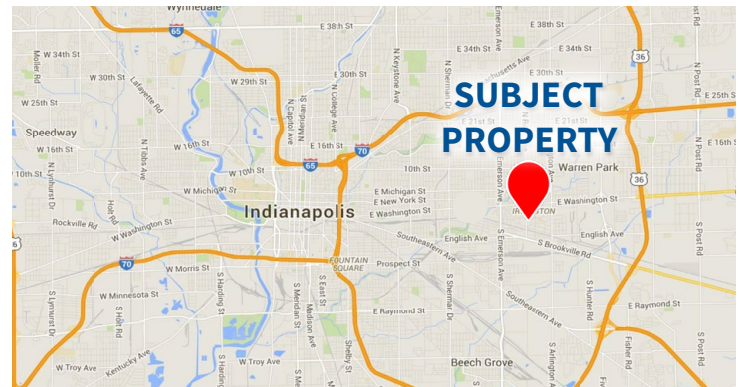
**VERITAS**  
REALTY




5535-5609 E Washington St, Indianapolis, IN 46219



## PROPERTY HIGHLIGHTS:

- ▀ Two former restaurant spaces available
- ▀ Located within the Irvington Historic District, a historic Indianapolis suburb
- ▀ Excellent visibility and accessibility along East Washington Street
- ▀ Located minutes from downtown Indianapolis
- ▀ Dedicated parking



DEMOGRAPHICS	 1 MILE	 3 MILE	 5 MILE
Population:	14,704	82,080	239,184
Average HH Income:	\$61,818	\$48,827	\$55,402
Households:	6,657	33,326	97,623

CONTACT:

**Paul Rogozinski**

T: 317-789-8164

E: Progozinski@VeritasRealty.com

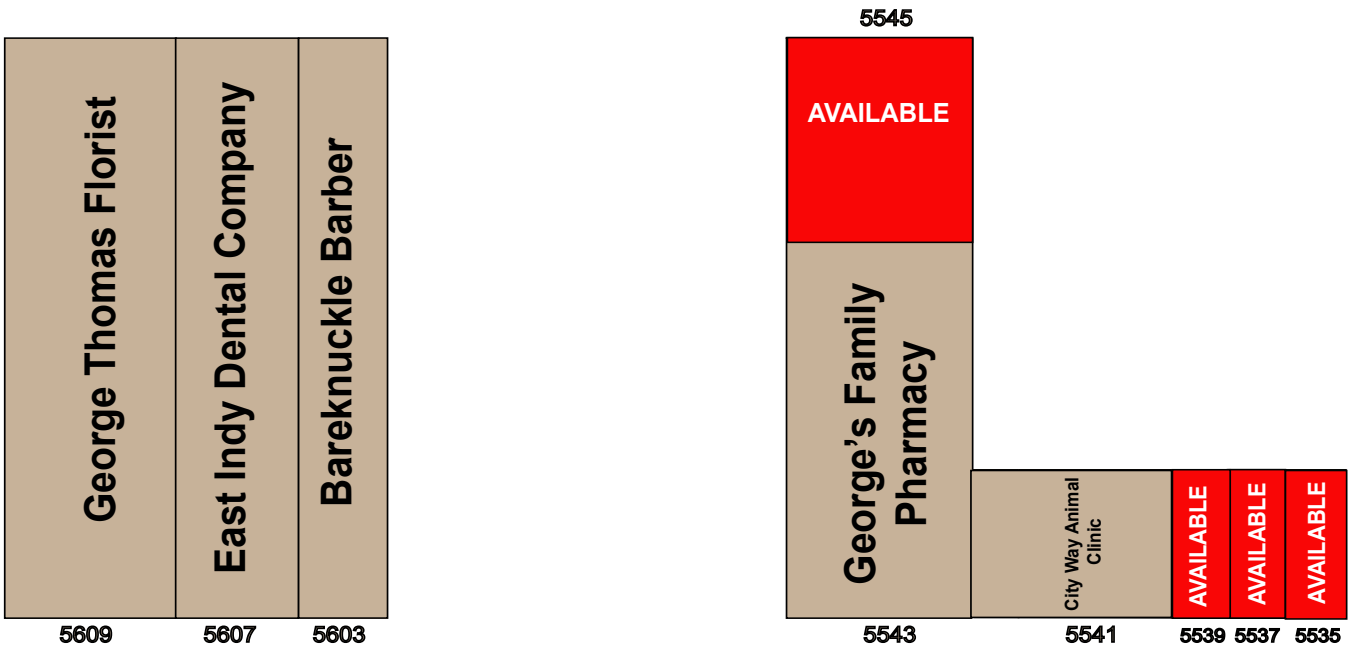
**FOR  
LEASE**

[www.VeritasRealty.com](http://www.VeritasRealty.com)

# IRVINGTON SHOPS

1,600 - 3,200 SF AVAILABLE | FOR LEASE

**SITE  
PLAN**



## E. Washington Street

### Tenant Roster

Suite	Tenant	Size
5609	George Thomas Florist	3,700 SF
5607	East Indy Dental Company	2,250 SF
5603	Bareknuckle Barber	1,400 SF
5545	AVAILABLE	1,625 SF
5543	George's Family Pharmacy	2,520 SF
5541	City Way Animal Clinic	4,350 SF
5539	AVAILABLE	1,600 SF
5537	AVAILABLE	1,600 SF
5535	AVAILABLE	1,600 SF

**CHAINLINKS**  
RETAIL ADVISORS

Information within this brochure has been obtained from sources believed reliable, but we make no representations or warranties, expressed or implied, as to the accuracy of the information. Prospective tenant and tenant representatives must verify the information and bears all risk for any inaccuracies as it relates to property and market information.

**CONTACT:**

**Paul Rogozinski**

T: 317-789-8164

E: Progozinski@VeritasRealty.com

**VERITAS**  
REALTY

www.VeritasRealty.com