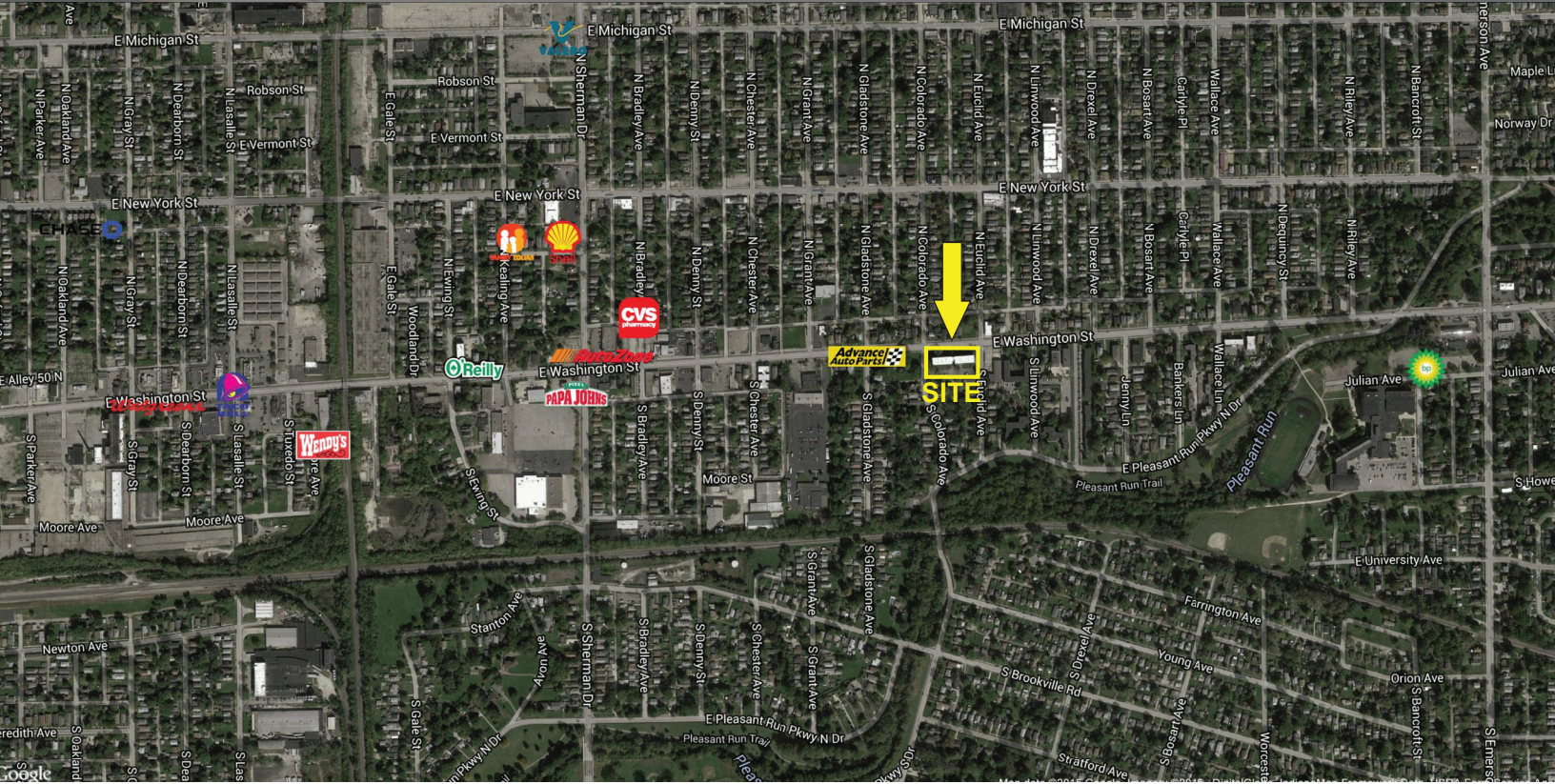


# Retail Space Available For Lease - Irvington Shops

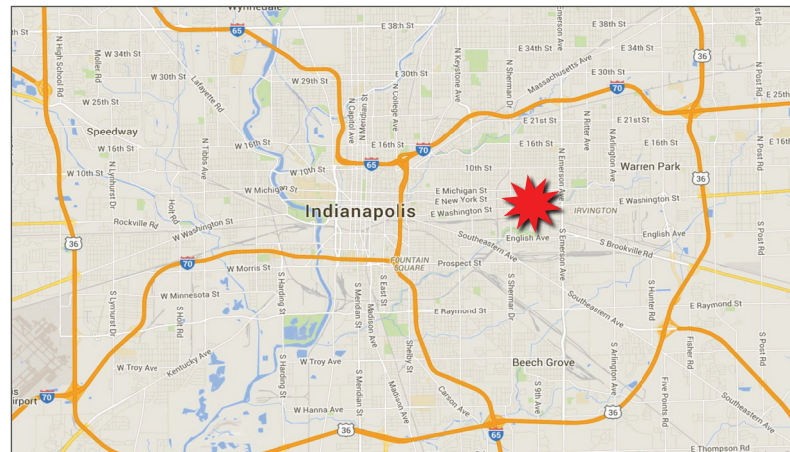
## One 1,600 SF Suite Available

4350-5609 E. Washington Street, Indianapolis, IN 46219



### Property Highlights:

- Excellent Neighborhood location
- Located within the Irvington Historic District, a historic suburb
- Excellent visibility and accessibility along East Washington St
- Located minutes from downtown Indianapolis
- Dedicated Parking Lot



Demographics	1 mile	3 mile	5 mile
Population	18,027	96,919	236,398
Households	7,458	39,460	97,733
Avg. Household Income	\$39,964	\$42,049	\$44,180



For more information contact:  
 Paul Rogozinski  
 317-789-8164  
 progozinski@veritasrealty.com

930 E 66th St - Indianapolis, IN 46220 - ph. (317) 472-1800 - fax (317) 472-1802 - www.veritasrealty.com



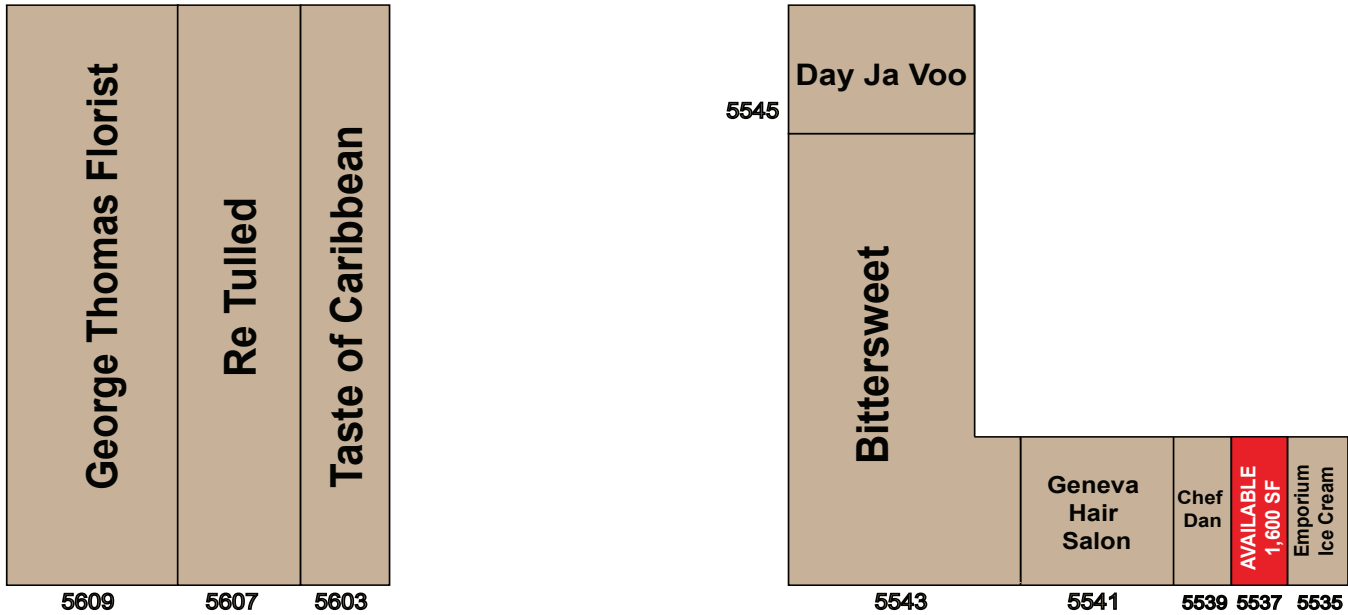
**VERITAS  
REALTY**



# Retail Space Available For Lease - Irvington Shops

## One 1,600 SF Suite Available

4350-5609 E. Washington Street, Indianapolis, IN 46219



### E. Washington Street

#### Tenant Roster

Suite	Tenant	Size
5609	George Thomas Florist	3,700 SF
5607	Re Tulled	2,250 SF
5603	Taste of Caribbean	1,400 SF
5545	Day Ja Voo	1,625 SF
5543	Bittersweet	2,520 SF
5541	Geneva Hair Salon	4,350 SF
5539	Chef Dan	1,600 SF
<b>5537</b>	<b>AVAILABLE</b>	<b>1,600 SF</b>
5535	Emporium Ice Cream	1,600 SF

For more information contact:

Paul Rogozinski

317-789-8164

progozinski@veritasrealty.com



**VERITAS**  
**REALTY**

930 E 66th St - Indianapolis, IN 46220 - ph. (317) 472-1800 - fax (317) 472-1802 - www.veritasrealty.com

