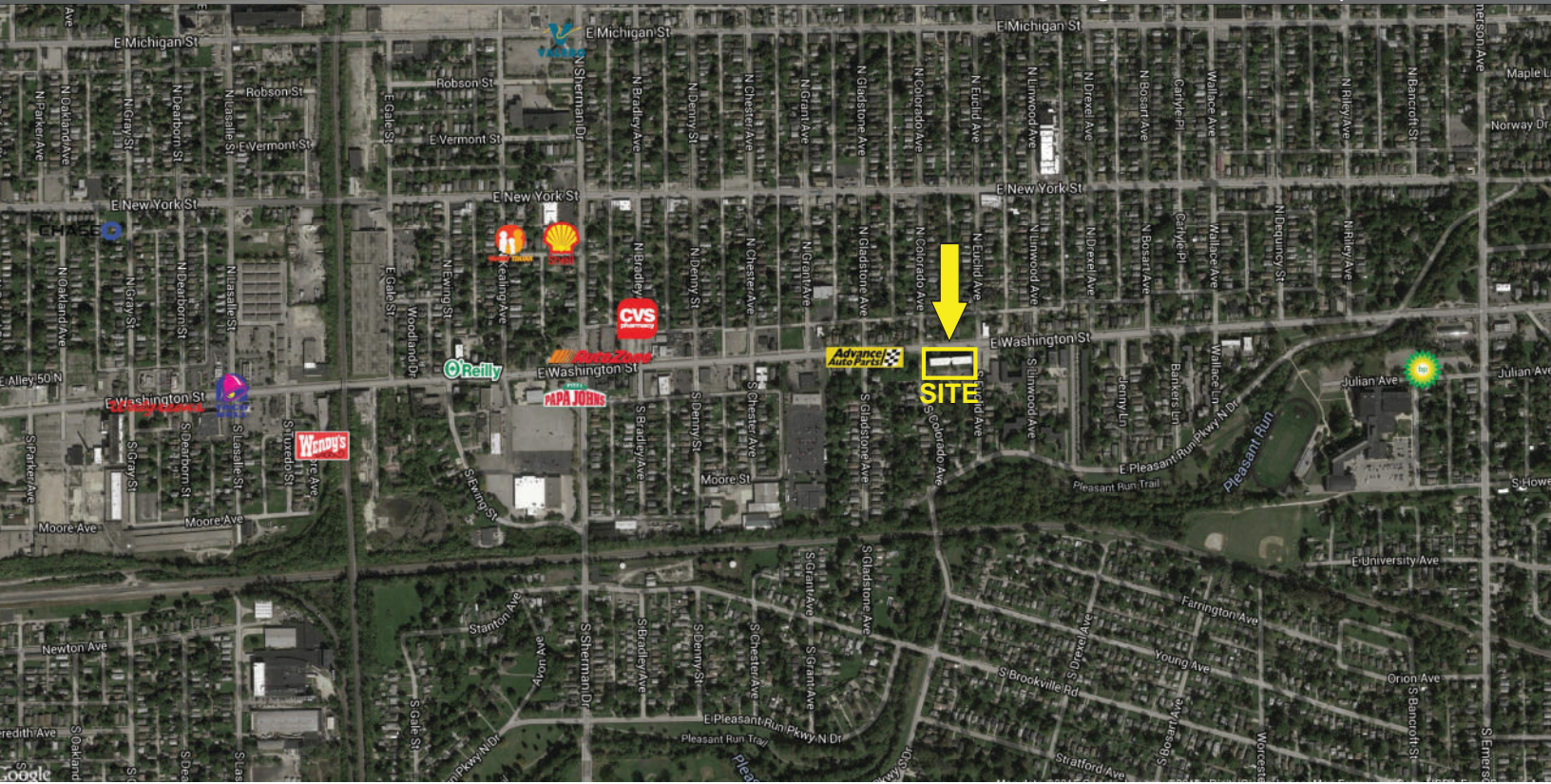


Retail Space Available For Lease - Irvington Shops

1,400 SF Space Available

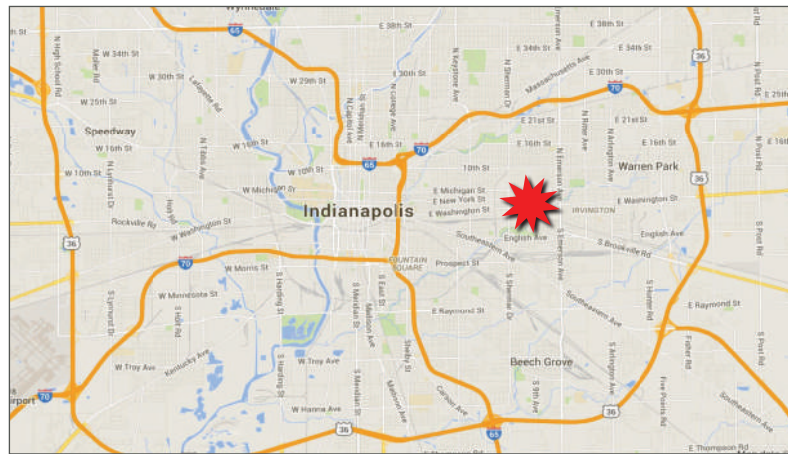
4,350 SF Restaurant Space Available

4350-5609 E. Washington Street, Indianapolis, IN 46219



Property Highlights:

- Excellent Neighborhood location
- Located within the Irvington Historic District, a historic suburb
- Excellent visibility and accessibility along East Washington St
- Located minutes from downtown Indianapolis
- Dedicated Parking Lot



Demographics	1 mile	3 mile	5 mile
Population	17,966	96,975	236,183
Households	7,358	38,969	96,495
Avg. Household Income	\$38,202	\$38,280	\$40,523



For more information contact:
 Paul Rogozinski
 317-789-8164
 progozinski@veritasrealty.com



930 E 66th St - Indianapolis, IN 46220 - ph. (317) 472-1800 - fax (317) 472-1802 - www.veritasrealty.com

Retail Space Available For Lease - Irvington Shops

1,400 SF Space Available

4,350 SF Restaurant Space Available

4350-5609 E. Washington Street, Indianapolis, IN 46219



E. Washington Street

Tenant Roster

Suite	Tenant	Size
5609	George Thomas Florist	3,700 SF
5607	Re Tulled	2,250 SF
5603	AVAILABLE	1,400 SF
5545	Day Ja Voo	1,625 SF
5543	AVAILABLE	4,350 SF
5541	Geneva Hair Salon	2,520 SF
5539	Chef Dan	1,600 SF
5537	Chef Dan	1,600 SF
5535	Emporium Ice Cream	1,600 SF

For more information contact:

Paul Rogozinski

317-789-8164

progozinski@veritasrealty.com



**VERITAS
REALTY**

930 E 66th St - Indianapolis, IN 46220 - ph. (317) 472-1800 - fax (317) 472-1802 - www.veritasrealty.com