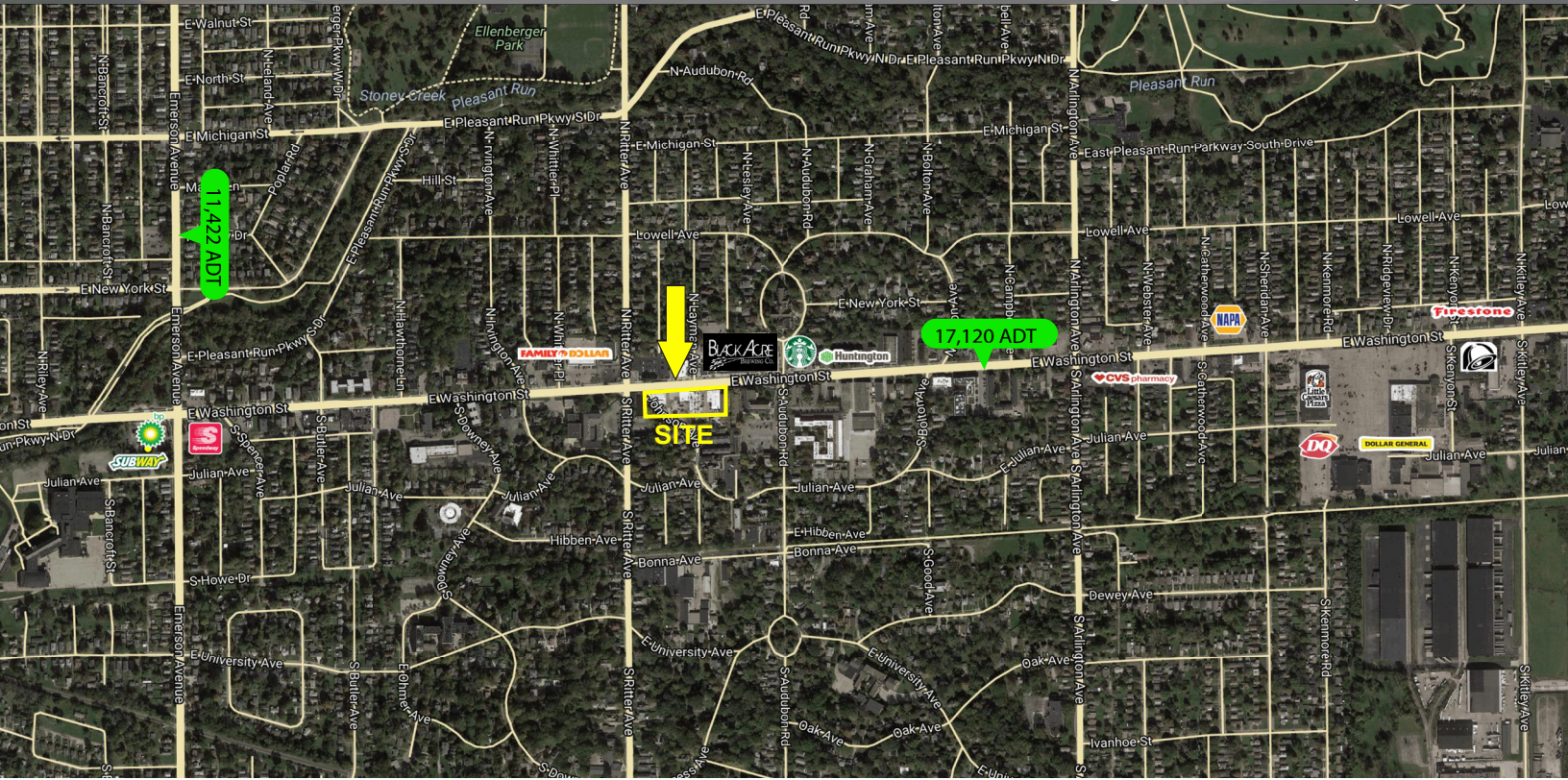


Retail Space Available For Lease - Irvington Shops

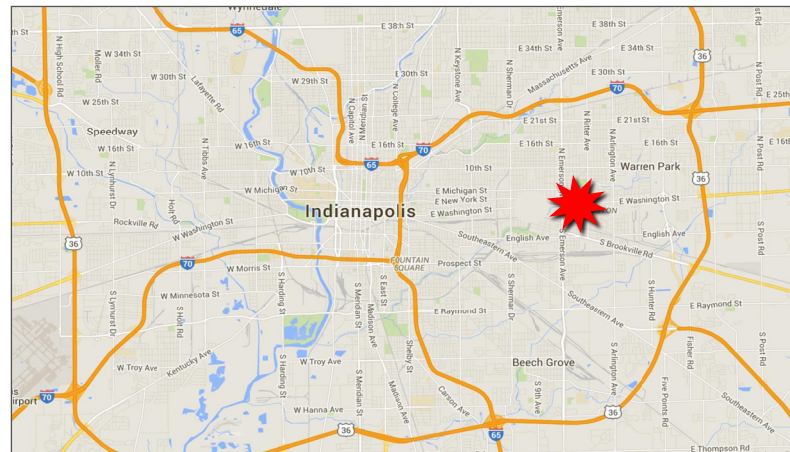
100% Occupied

5535-5609 E. Washington Street, Indianapolis, IN 46219



Property Highlights:

- Excellent Neighborhood location
- Located within the Irvington Historic District, a historic suburb
- Excellent visibility and accessibility along East Washington St
- Located minutes from downtown Indianapolis
- Dedicated Parking Lot



Demographics	1 mile	3 mile	5 mile
Population	15,692	\$102,198	241,883
Households	7,669	42,446	98,631
Avg. Household Income	\$76,038	\$47,808	\$47,075



For more information contact:
 Paul Rogozinski
 317-789-8164
 progozinski@veritasrealty.com

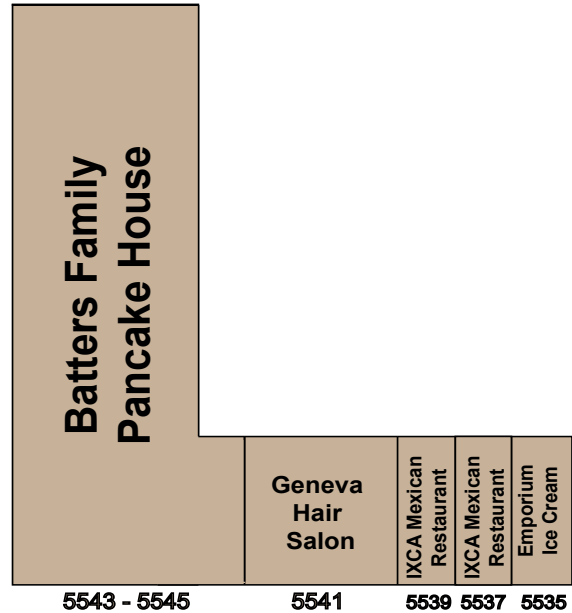
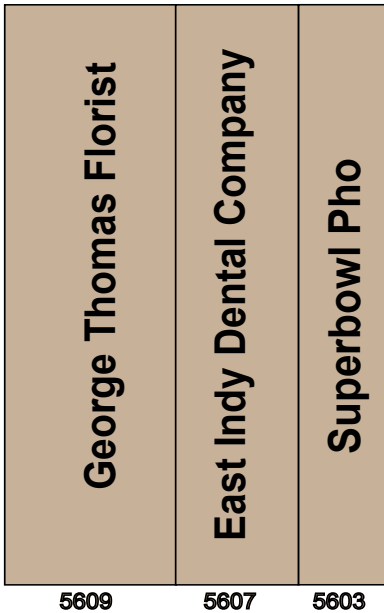


6440 Westfield Blvd., Indianapolis, IN 46220 | ph. (317) 472-1800 - fax (317) 472-1802 | VeritasRealty.com



Retail Space Available For Lease - Irvington Shops 100% Occupied

5535-5609 E. Washington Street, Indianapolis, IN 46219



E. Washington Street

Tenant Roster

Suite	Tenant	Size
5609	George Thomas Florist	3,700 SF
5607	East Indy Dental Company	2,250 SF
5603	Superbowl Pho	1,400 SF
5543-5545	Batters Family Pancake House	4,145 SF
5541	Geneva Hair Salon	4,350 SF
5539	IXCA Mexican Restaurant	1,600 SF
5537	IXCA Mexican Restaurant	1,600 SF
5535	Emporium Ice Cream	1,600 SF

For more information contact:

Paul Rogozinski

317-789-8164

progozinski@veritasrealty.com



**VERITAS
REALTY**

