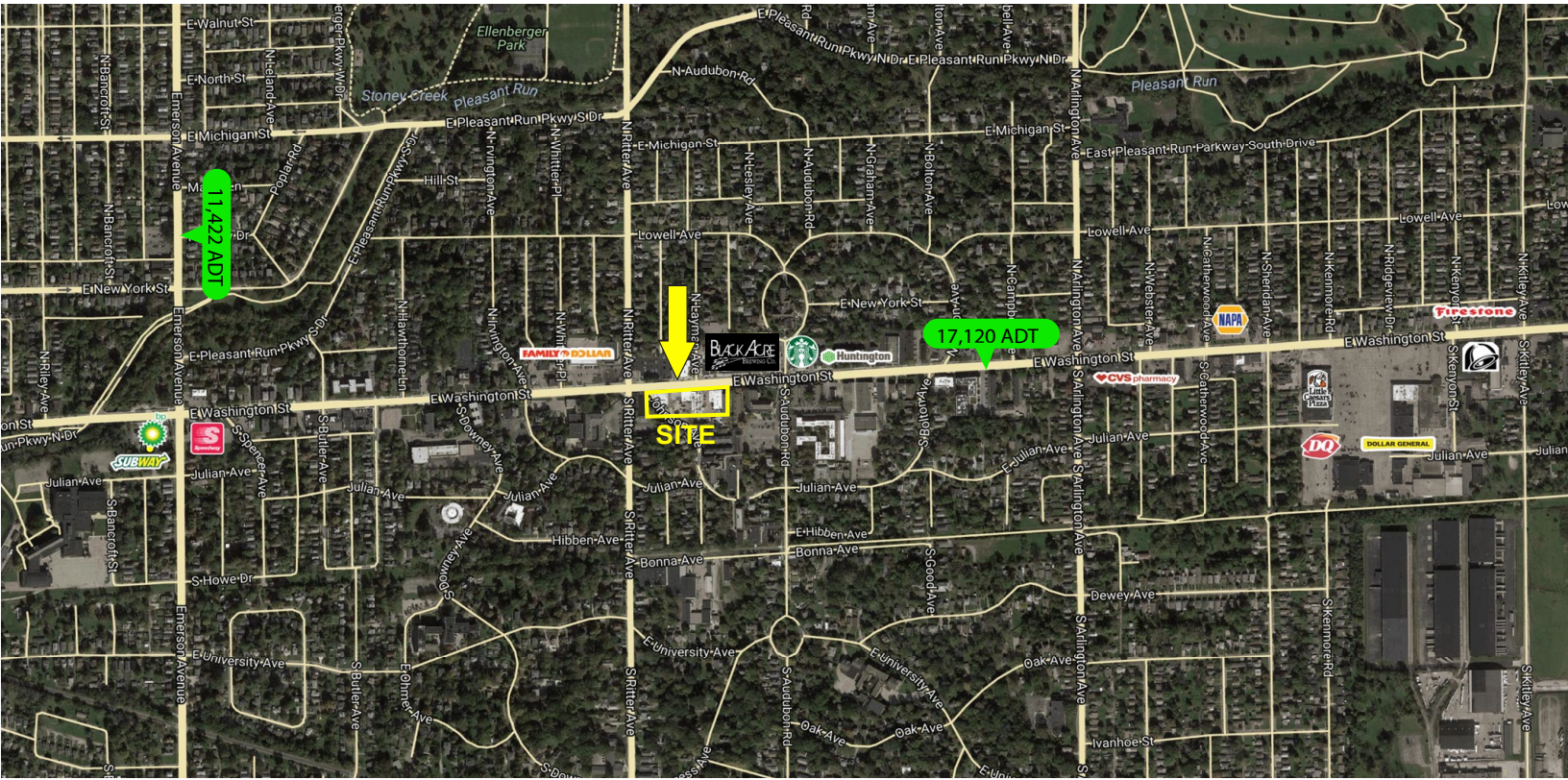


Irvington Shops

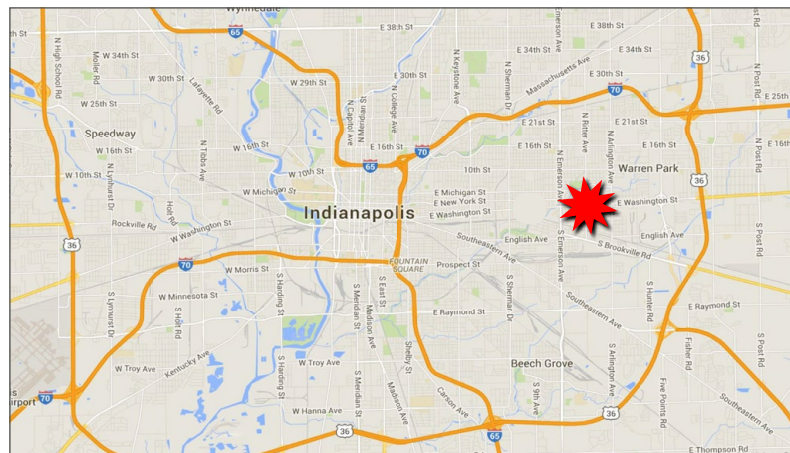
2,520 - 3,200 SF Available

5535-5609 E Washington Street, Indianapolis, IN 46219



Property Highlights:

- Two former restaurant spaces available
- Located within the Irvington Historic District, a historic suburb
- Excellent visibility and accessibility along East Washington St
- Located minutes from downtown Indianapolis
- Dedicated Parking Lot



Demographics	1 mile	3 mile	5 mile
Population	14,704	82,080	239,184
Households	6,657	33,326	97,623
Avg. Household Income	\$61,818	\$48,827	\$55,402

FOR MORE INFORMATION
PLEASE CONTACT:

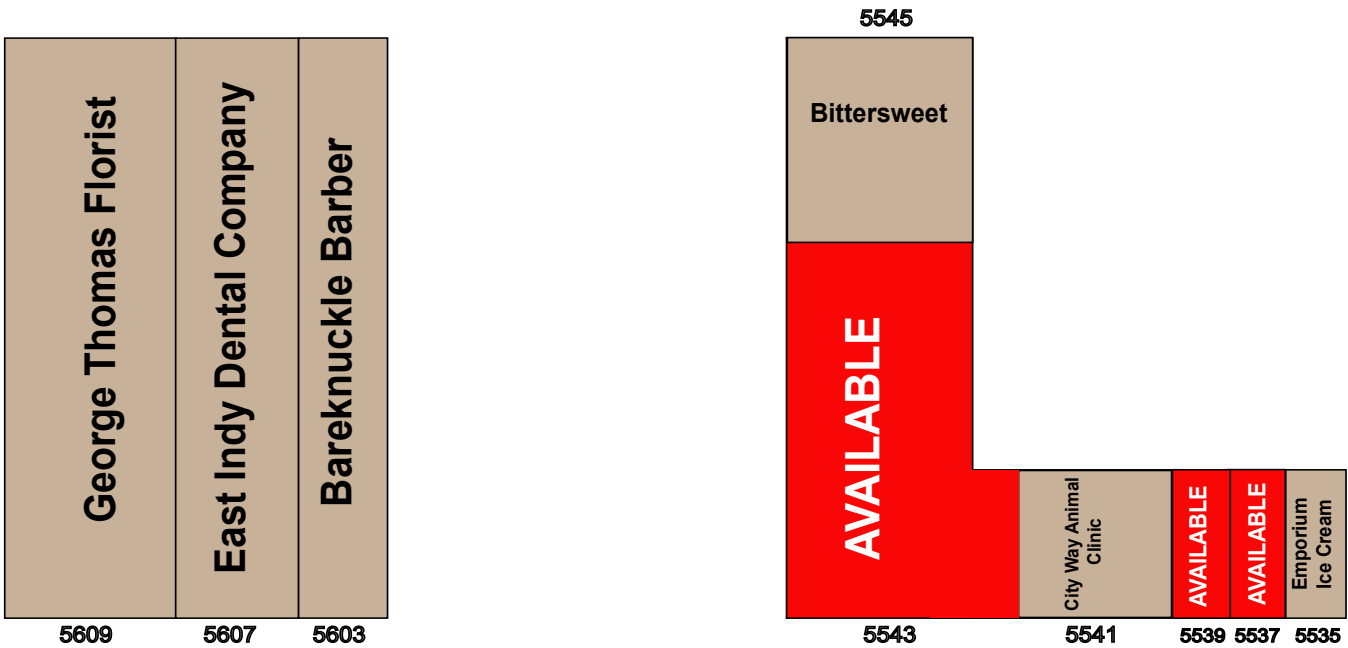
Paul Rogozinski
T: 317-789-8164
E: PRogozinski@VeritasRealty.com



Irvington Shops

2,520 - 3,200 SF Available

5535-5609 E Washington Street, Indianapolis, IN 46219



E. Washington Street

Tenant Roster

Suite	Tenant	Size
5609	George Thomas Florist	3,700 SF
5607	East Indy Dental Company	2,250 SF
5603	Bareknuckle Barber	1,400 SF
5545	Bittersweet	1,625 SF
5543	AVAILABLE	2,520 SF
5541	City Way Animal Clinic	4,350 SF
5539	AVAILABLE	1,600 SF
5537	AVAILABLE	1,600 SF
5535	Emporium Ice Cream	1,600 SF

Information within this brochure has been obtained from sources believed reliable, but we make no representations or warranties, expressed or implied, as to the accuracy of the information. Prospective tenant and tenant representatives must verify the information and bears all risk for any inaccuracies as it relates to property and market information.

FOR MORE INFORMATION
PLEASE CONTACT:

Paul Rogozinski
T: 317-789-8164
E: PRogozinski@VeritasRealty.com

