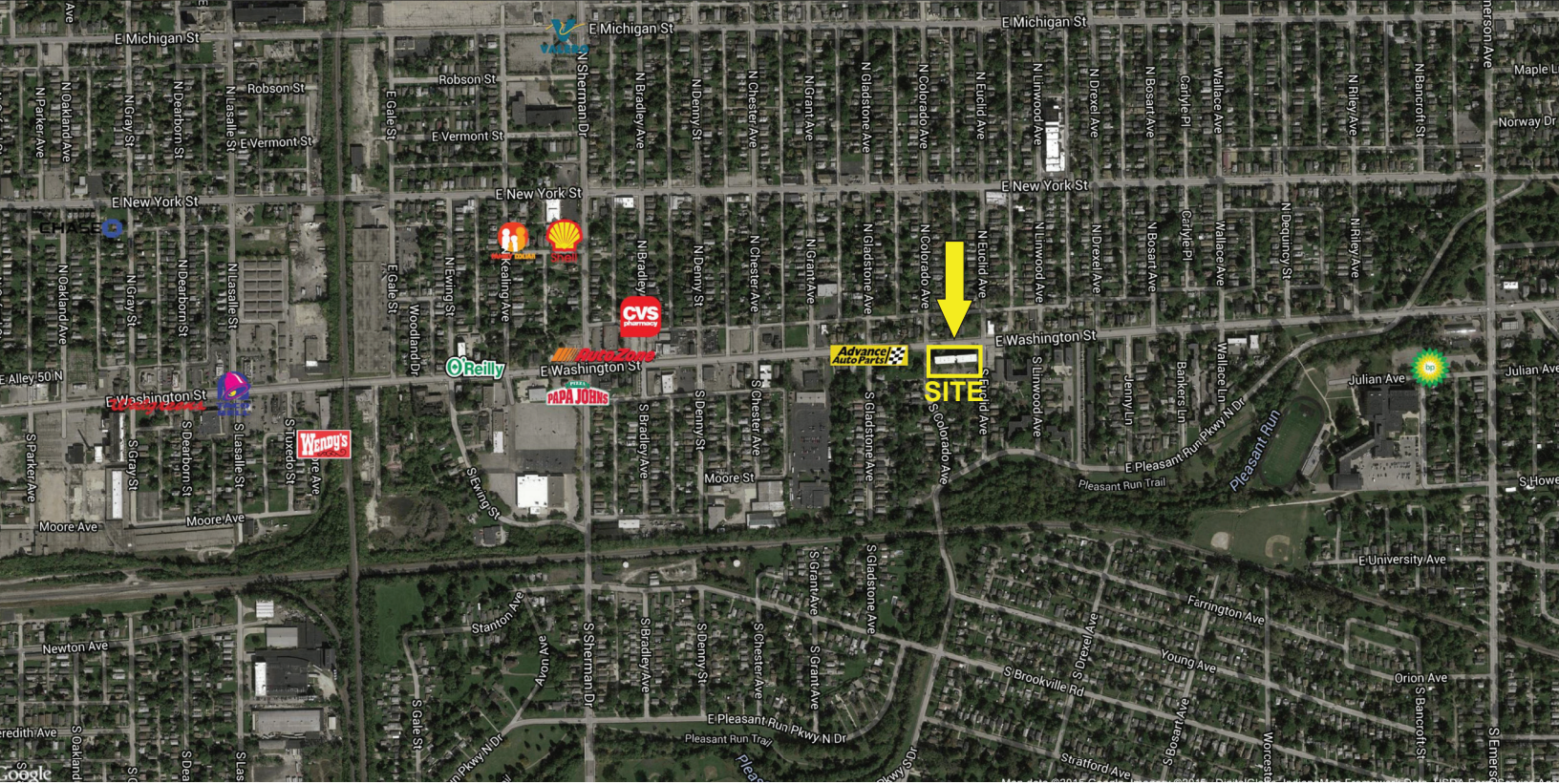


Retail Space Available For Lease - Irvington Shops

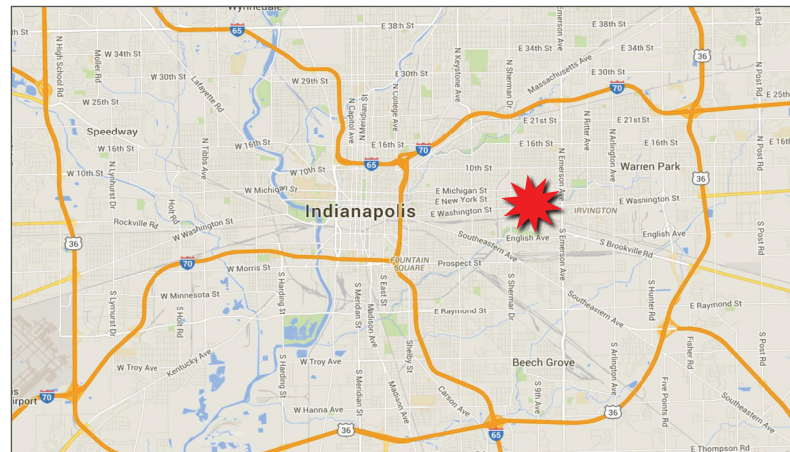
1,600-2,250 SF Available

4350-5609 E. Washington Street, Indianapolis, IN 46219



Property Highlights:

- Excellent Neighborhood location
- Located within the Irvington Historic District, a historic suburb
- Excellent visibility and accessibility along East Washington St
- Located minutes from downtown Indianapolis
- Dedicated Parking Lot



Demographics	1 mile	3 mile	5 mile
Population	18,349	97,997	237,558
Households	7,632	40,033	98,299
Avg. Household Income	\$40,874	\$45,680	\$47,710



VERITAS REALTY

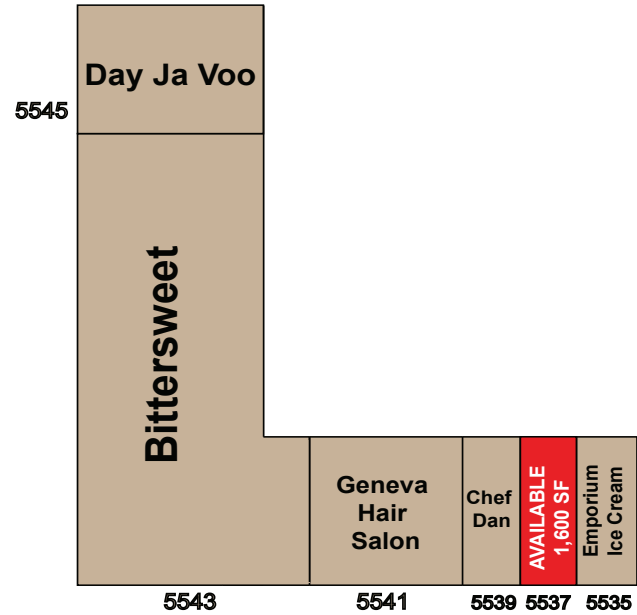
For more information contact:
 Paul Rogozinski
 317-789-8164
 progoszinski@veritasrealty.com



Retail Space Available For Lease - Irvington Shops

1,600-2,250 SF Available

4350-5609 E. Washington Street, Indianapolis, IN 46219



E. Washington Street

Tenant Roster

Suite	Tenant	Size
5609	George Thomas Florist	3,700 SF
5607	AVAILABLE	2,250 SF
5603	Taste of Caribbean	1,400 SF
5545	Day Ja Voo	1,625 SF
5543	Bittersweet	2,520 SF
5541	Geneva Hair Salon	4,350 SF
5539	Chef Dan	1,600 SF
5537	AVAILABLE	1,600 SF
5535	Emporium Ice Cream	1,600 SF

For more information contact:

Paul Rogozinski

317-789-8164

progozinski@veritasrealty.com



VERITAS
REALTY

