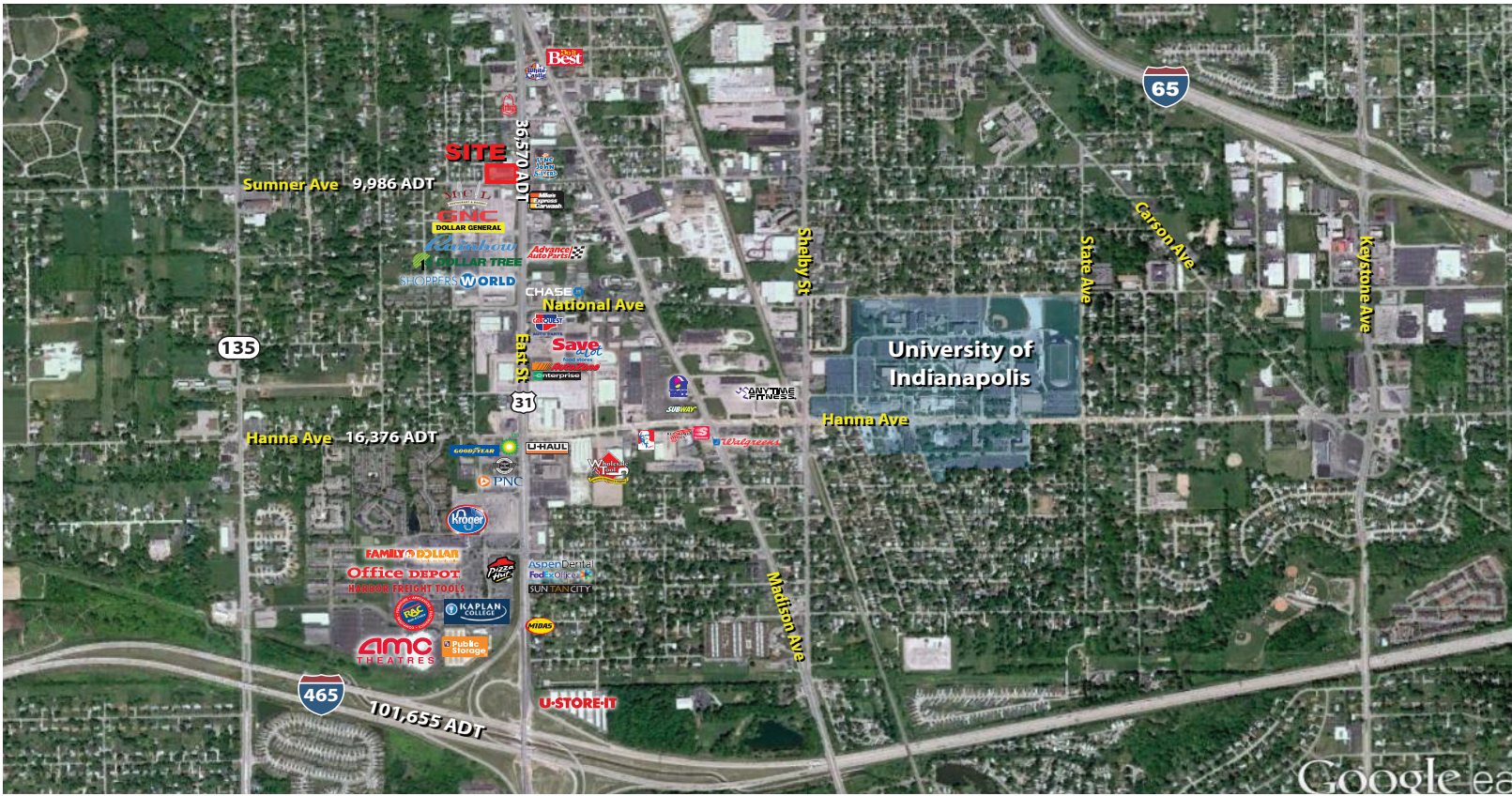


# Prime Retail Space Available

## PLS Sumner Center

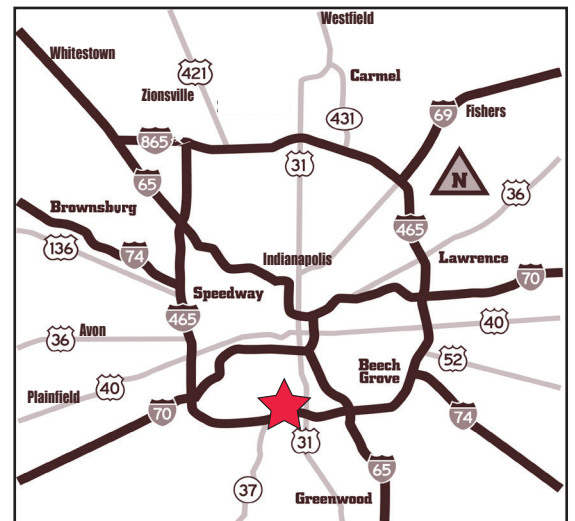
1,000 - 2,100 SF

444 East Sumner Avenue, Indianapolis, IN 46227



### Property Highlights:

- Dynamic trade area consisting of strong national retailers, high occupancy rates, & high retail sales volumes
- Ample parking & pylon signage
- Visible and easily accessible to U.S. 31 / East Street (36,570 cars per day) & Sumner Avenue (9,986 cars per day).
- Close proximity to I-465 interchange
- Located within 10 minutes from downtown Indianapolis
- Signalized intersection with access from both S East St & E Sumner Ave



Demographics	1 mile	3 mile	5 mile
Estimated Population	11,587	72,528	218,297
Estimated Households	4,217	28,184	87,238
Est. Avg. HH Income	\$49,099	\$52,211	\$60,359

FOR MORE INFORMATION  
PLEASE CONTACT:

**SETH BIGGERSTAFF**  
T: 317-472-1800  
E: Seth@VeritasRealty.com

**ANDREW DEMAREE**  
T: 317-472-1800  
E: ADemaree@VeritasRealty.com

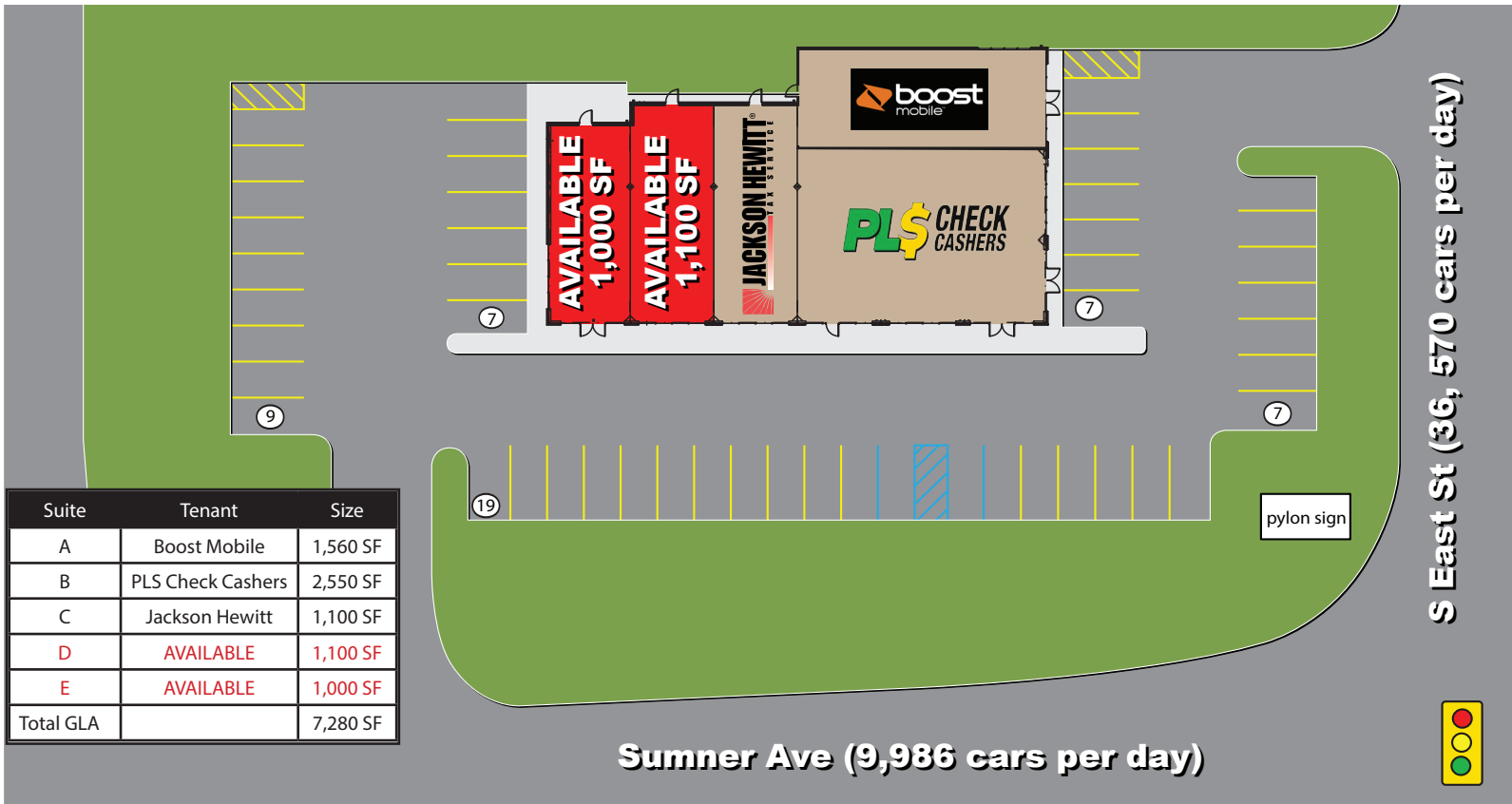


# Prime Retail Space Available

## PLS Sumner Center

### 1,000 - 2,100 SF

444 East Sumner Avenue, Indianapolis, IN 46227



FOR MORE INFORMATION  
PLEASE CONTACT:

**SETH BIGGERSTAFF**  
T: 317-472-1800  
E: Seth@VeritasRealty.com

**ANDREW DEMAREE**  
T: 317-472-1800  
E: ADemaree@VeritasRealty.com

