

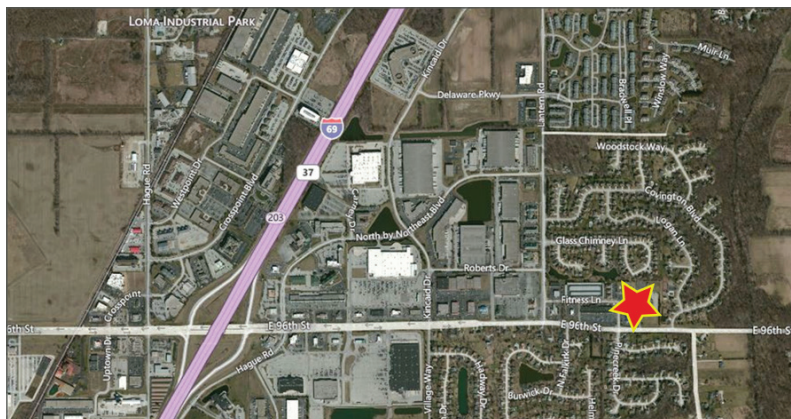
# Pine Creek Shoppes Fully Occupied

8958 E. 96th Street, Fishers, IN 46037



## Property Highlights:

- Located just east of Interstate 69 (110,486 ADT)
- Highly visible and easily accessible to E. 96th St. (34,697 ADT)
- Dynamic retail trade area with strong national retailers and populated by an affluent demographic base
- Area retailers include Wal-Mart Supercenter, Meijer, Kohl's, Fry's Electronics, Staples, Regal Cinemas, Kittle's Furniture, as well as large employers that include Roche and Sallie Mae



Demographics	1 mile	3 mile	5 mile
Estimated Population	5,938	65,709	169,665
Est. Avg. HH Income	\$104,896	\$108,961	\$115,802

FOR MORE INFORMATION  
PLEASE CONTACT:

**Paul Rogozinski**

T: 317-789-8164

E: PRogozinski@VeritasRealty.com

**Seth Biggerstaff**

T: 317-472-1800

E: Seth@VeritasRealty.com



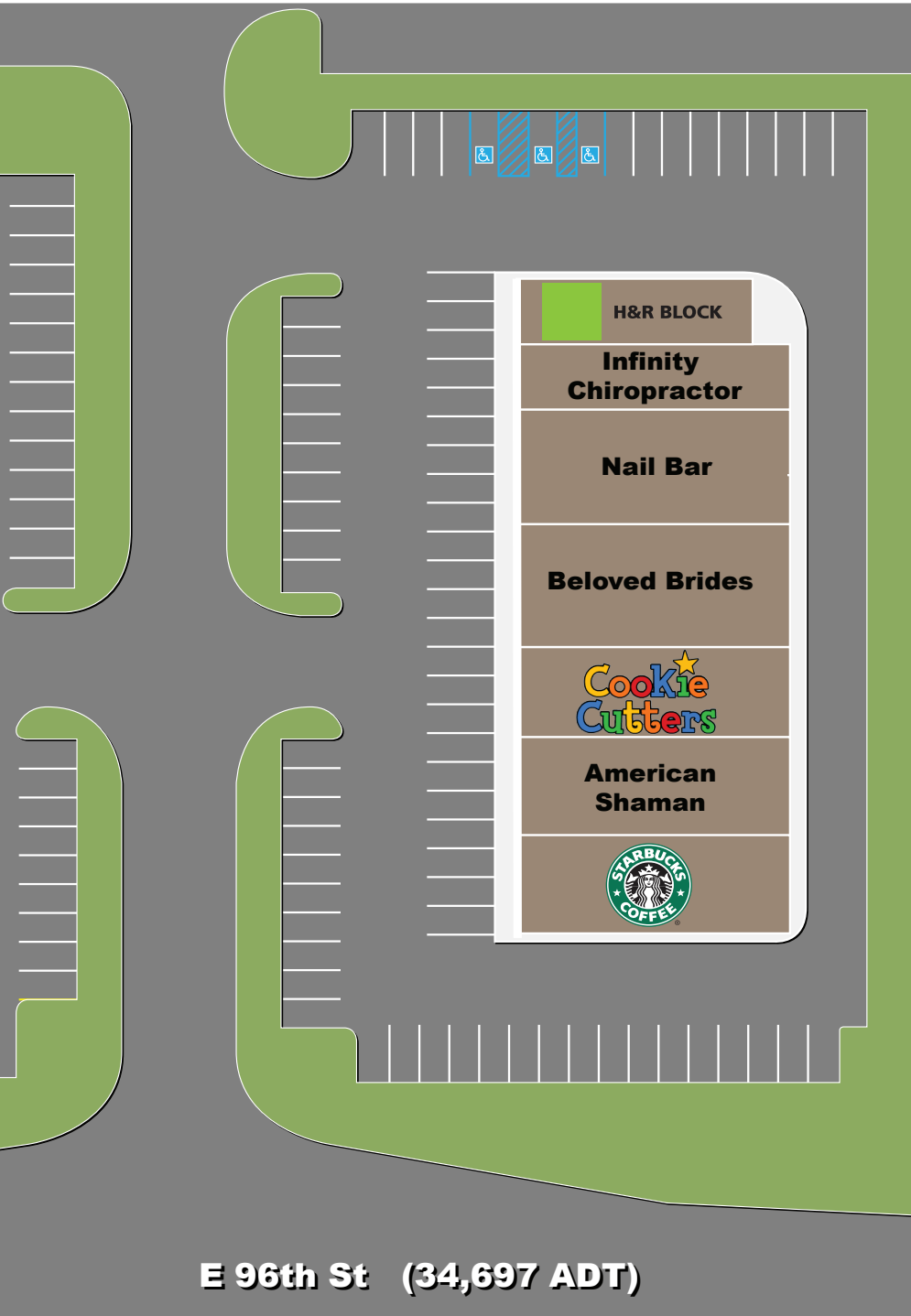
# Pine Creek Shoppes

## Fully Occupied

8958 E. 96th Street, Fishers, IN 46037

### TENANT ROSTER

Suite	Tenant	Size
8958	Starbucks	2,400 SF
8962	American Shaman	2,400 SF
8964	Cookie Cutters	2,200 SF
8966	Beloved Brides	3,000 SF
8970-8972	Nail Bar	2,800 SF
8974	Infinity Chiropractor	1,600 SF
8976	H&R Block	1,400 SF
<b>Total GLA</b>		<b>15,800 SF</b>



FOR MORE INFORMATION  
PLEASE CONTACT:

Paul Rogozinski

T: 317-789-8164

E: PRogozinski@VeritasRealty.com

Seth Biggerstaff

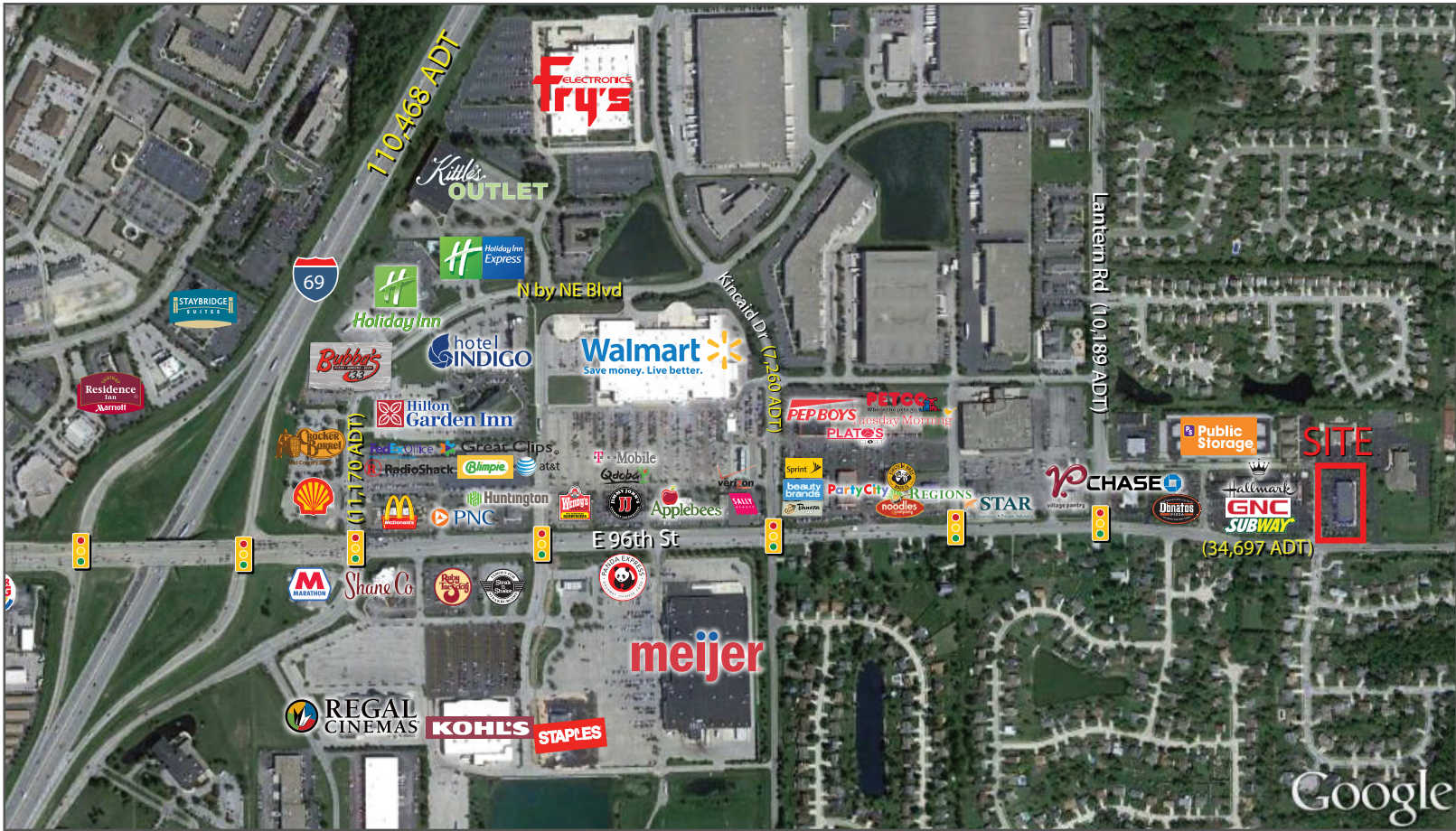
T: 317-472-1800

E: Seth@VeritasRealty.com



# Pine Creek Shoppes Fully Occupied

8958 E. 96th Street, Fishers, IN 46037



FOR MORE INFORMATION  
PLEASE CONTACT:

Paul Rogozinski

T: 317-789-8164

E: PRogozinski@VeritasRealty.com

Seth Biggerstaff

T: 317-472-1800

E: Seth@VeritasRealty.com

