

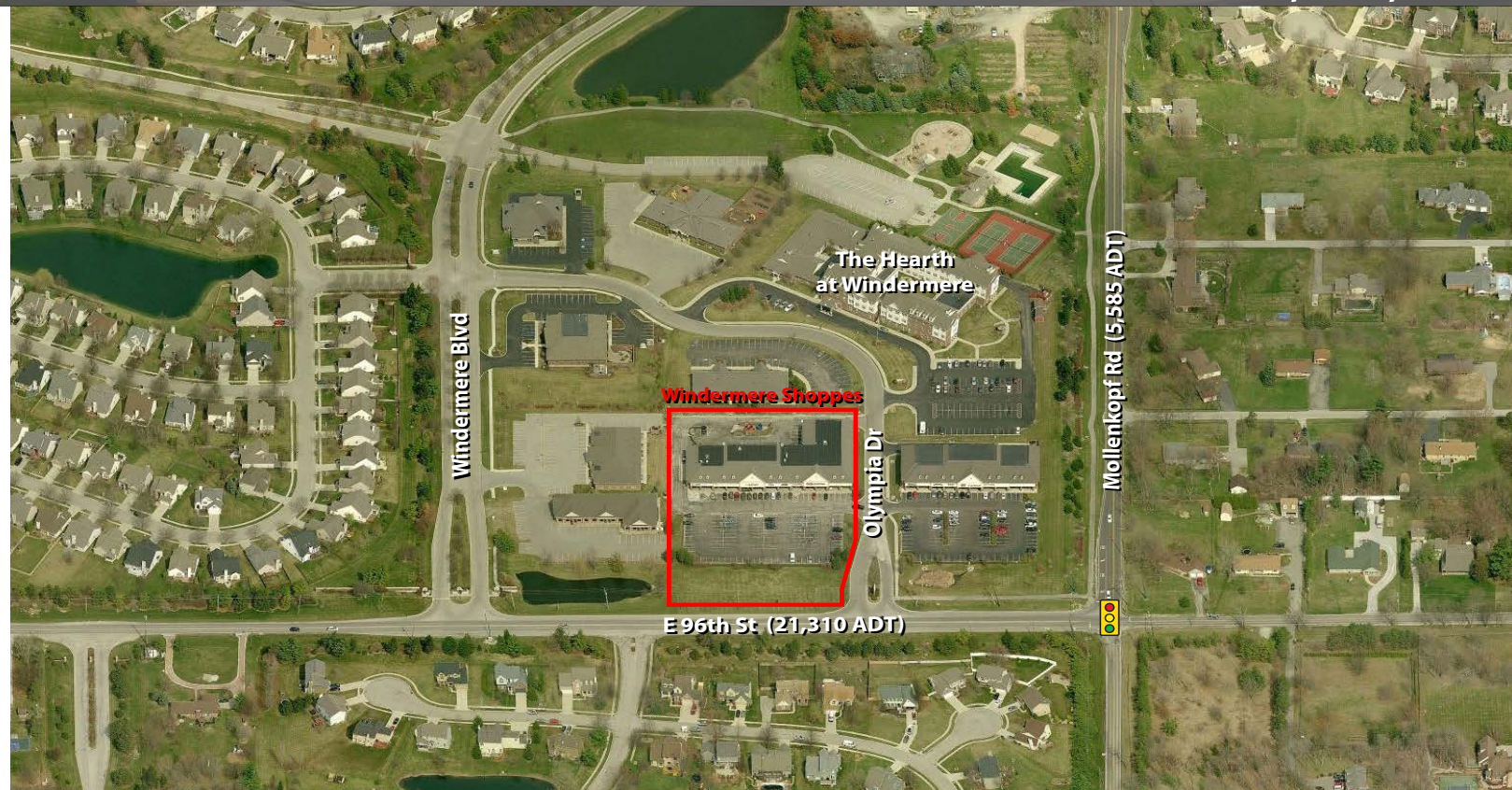
Available For Lease

Windermere Shoppes

Former Restaurant & Dentist Suites Available

1,600 SF

10562 E 96th St, Fishers, IN 46038



Property Highlights:

- 1,600 SF available for lease
- Center is ideally located in affluent and densely populated area in Fishers
- Join CVS Pharmacy, Dairy Queen, Papa John's, and more at this excellent neighborhood location
- Offering ample parking and outstanding visibility from 96th Street
- Great opportunity for medical, office or retail businesses



Demographics	1 mile	3 mile	5 mile
Estimated Population	7,716	59,416	160,535
Est. Avg. HH Income	\$137,924	\$112,002	\$97,465



For more information contact:
Paul Rogozinski
317-789-8164
progozinski@veritasrealty.com

A MEMBER OF
CHAINLINKS
RETAIL ADVISORS

6440 Westfield Blvd., Indianapolis, IN 46220 | ph. (317) 472-1800 - fax (317) 472-1802 | VeritasRealty.com

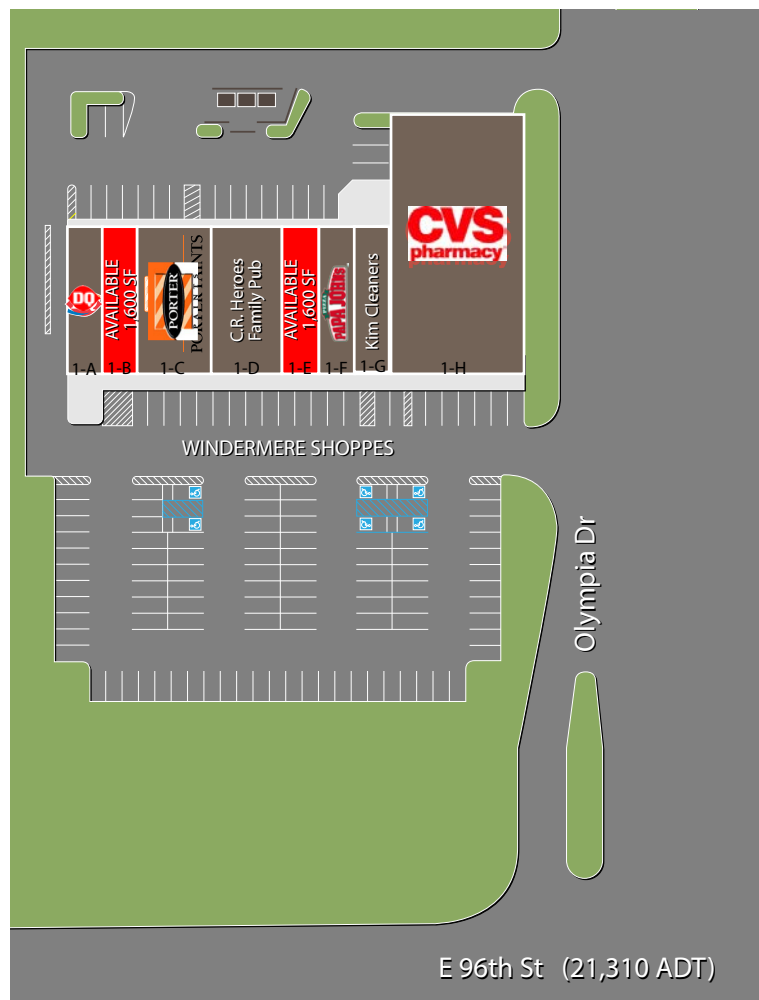
Available For Lease Windermere Shoppes

Former Restaurant & Dentist Suites Available

1,600 SF

10562 E 96th St, Fishers, IN 46038

Windermere Shoppes		
Suite	Tenant	Size
1-A	DairyQueen	1,600 SF
1-B	AVAILABLE (former dentist office)	1,600 SF
1-C	Porter Paints	3,200 SF
1-D	C.R. Heroes Family Pub	3,200 SF
1-E	AVAILABLE (former restaurant)	1,600 SF
1-F	Papa John's	1,600 SF
1-G	Kim Cleaners	1,600 SF
1-H	CVS Pharmacy	10,722 SF
Total GLA		25,122 SF



For more information contact:
Paul Rogozinski
317-789-8164
progozinski@veritasrealty.com

6440 Westfield Blvd., Indianapolis, IN 46220 | ph. (317) 472-1800 - fax (317) 472-1802 | VeritasRealty.com



VERITAS
REALTY

A MEMBER OF
CHAINLINKS
RETAIL ADVISORS