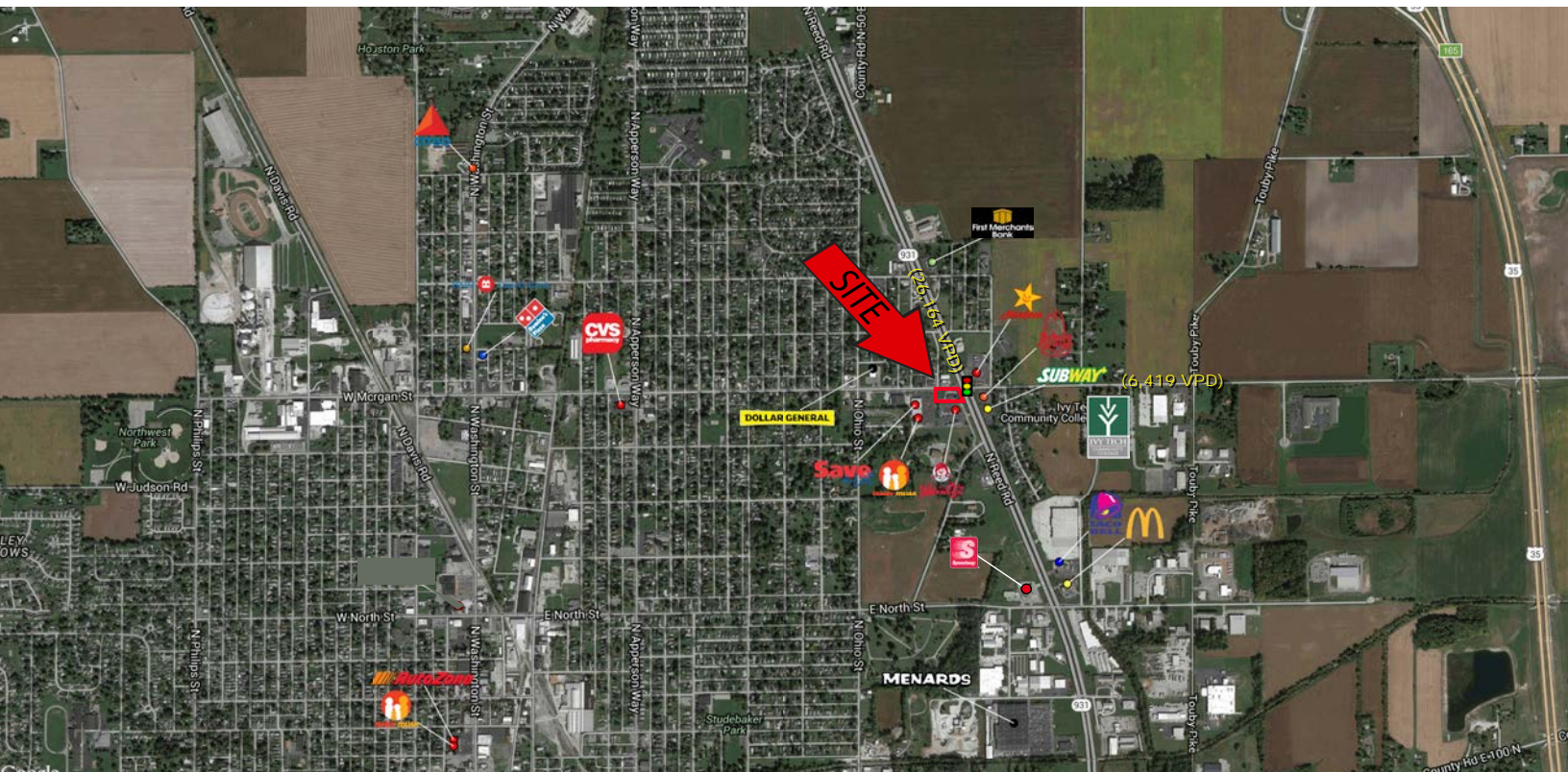


Retail Space Available

Shoppes at 931 & Morgan

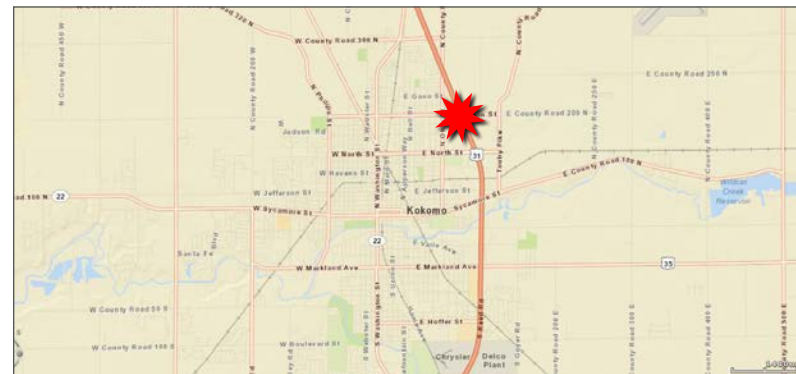
1,620 SF

1425 E Morgan St, Kokomo, IN 46901



Property Highlights:

- 1,620 SF available for lease with ample parking and large pylon sign
- Highly visible property located at the SW corner of SR 931 and Morgan St
- Hard corner site that is accessible and exposed to over 32,500 vehicles per day
- Property positioned as an outlet in front of Save-A-Lot and Family Dollar
- Area retailers include: Wendy's, Arby's, Hardee's, Subway, First Farmers Bank, and more



Demographics	3 mile	5 mile	10 mile
Estimated Population	32,162	56,623	88,639
Est. Avg. HH Income	\$51,381	\$61,135	\$70,979
Traffic Counts			
SR 931 / N Reed Rd	26,164 ADT		
E Morgan St	6,419 ADT		

FOR MORE INFORMATION
PLEASE CONTACT:

Seth Biggerstaff

T: 317-472-1800

E: Seth@VeritasRealty.com

Amy Tharp

T: 317-472-1800

E: Amy@VeritasRealty.com

Andrew Demaree

T: 317-472-1800

E: ADemaree@VeritasRealty.com



Retail Space Available

Shoppes at 931 & Morgan

1,620 SF

1425 E Morgan St, Kokomo, IN 46901



FOR MORE INFORMATION
PLEASE CONTACT:

Seth Biggerstaff
T: 317-472-1800
E: Seth@VeritasRealty.com

Amy Tharp
T: 317-472-1800
E: Amy@VeritasRealty.com

Andrew Demaree
T: 317-472-1800
E: ADemaree@VeritasRealty.com

VR VERITAS REALTY
A MEMBER OF
CHAINLINKS
RETAIL ADVISORS

Retail Space Available

Shoppes at 931 & Morgan

1,620 SF

1425 E Morgan St, Kokomo, IN 46901



Site Plan



FOR MORE INFORMATION
PLEASE CONTACT:

Seth Biggerstaff

T: 317-472-1800

E: Seth@VeritasRealty.com

Amy Tharp

T: 317-472-1800

E: Amy@VeritasRealty.com

Andrew Demaree

T: 317-472-1800

E: ADemaree@VeritasRealty.com

