

# KOKOMO TOWN CENTER

1700 East Boulevard Street, Kokomo, IN 46902

Project Overview

Site Plan

Aerial (Market)



## Property Highlights:

- Kokomo Town Center is a redevelopment at SR-931 & East Boulevard, in the heart of the retail district of Kokomo, IN.
- 2,000 parking spaces, 5 means of ingress & egress at 2 signalized intersections
- National Tenants include: Buffalo Wild Wings, AMC Showplace 12, Chuck E. Cheese's, Panera Bread, T-Mobile, Cosmo Prof, and Discount Tire.
- Kokomo is known as the "City of Firsts" thanks to its rich automotive heritage & history of technological discoveries.
- In 2018, U.S. Department of Labor named the Kokomo MSA as the 3rd largest employment gain in the U.S. over the last 10 years.
- Nearby employers include Chrysler (9,706+ employees), General Motors (600 employees), Community Health (1,058 employees), St. Vincent Hospital (850 employees) Haynes International (850 employees), Delphi (600 employees), Aptiv (600 employees).

Demographics	5 Mile	10 Mile	20 Mile
Population	54,510	84,242	144,195
Households	23,254	35,298	57,629
Avg. HH Income	\$62,220	\$67,175	\$69,783

## Major Tenants:



42,680 SF

62,619 SF

VPD: 35,486  
Avg HH Income: \$66,392  
Retail Sale Potential: \$1.4 Billion

FOR MORE INFORMATION  
PLEASE CONTACT:

Patricia Tesluk  
T: 317-789-8181  
E: PTesluk@ccim.net



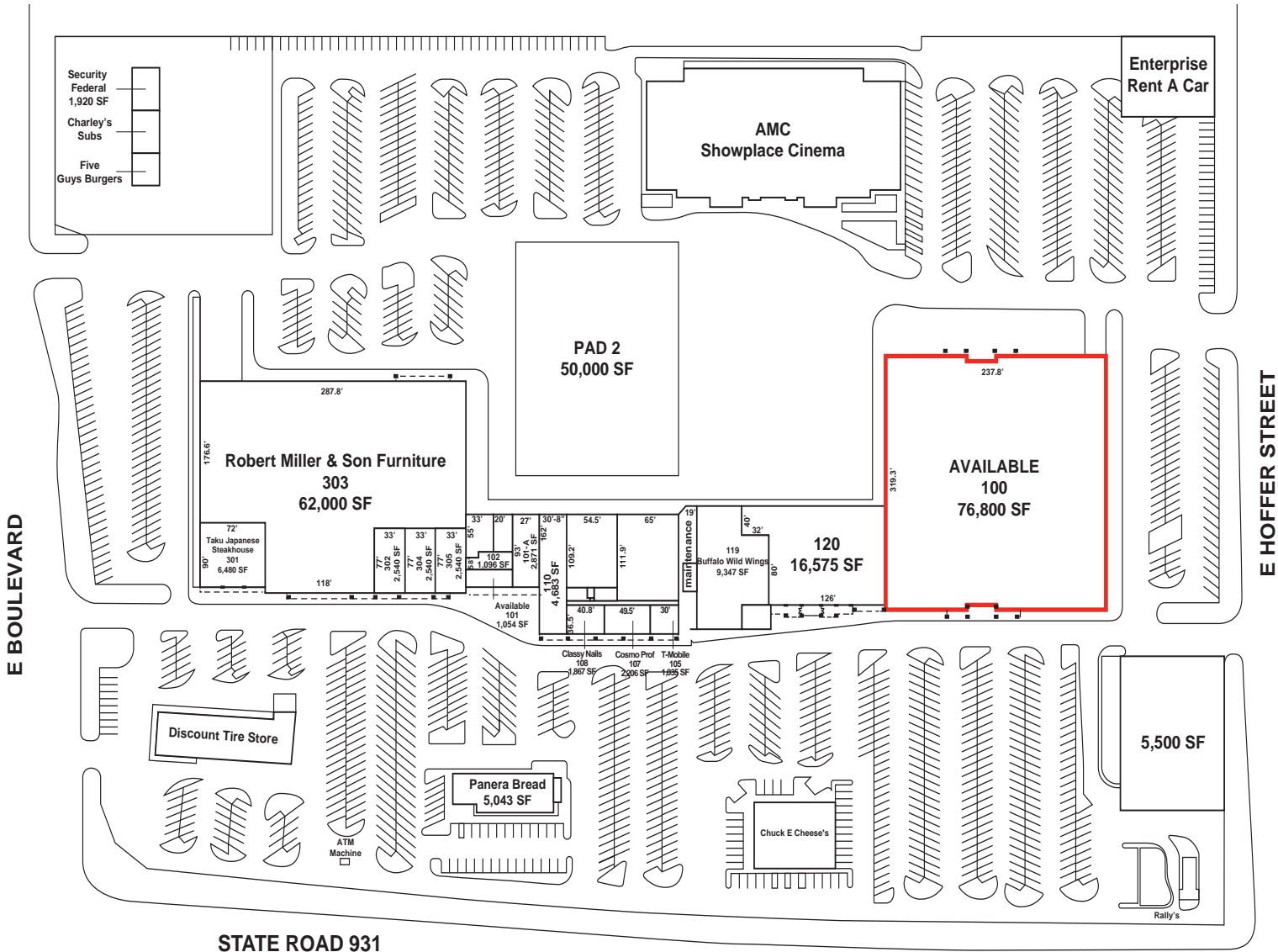
# KOKOMO TOWN CENTER

1700 East Boulevard Street, Kokomo, IN 46902

Project Overview

Site Plan

Aerial (Market)



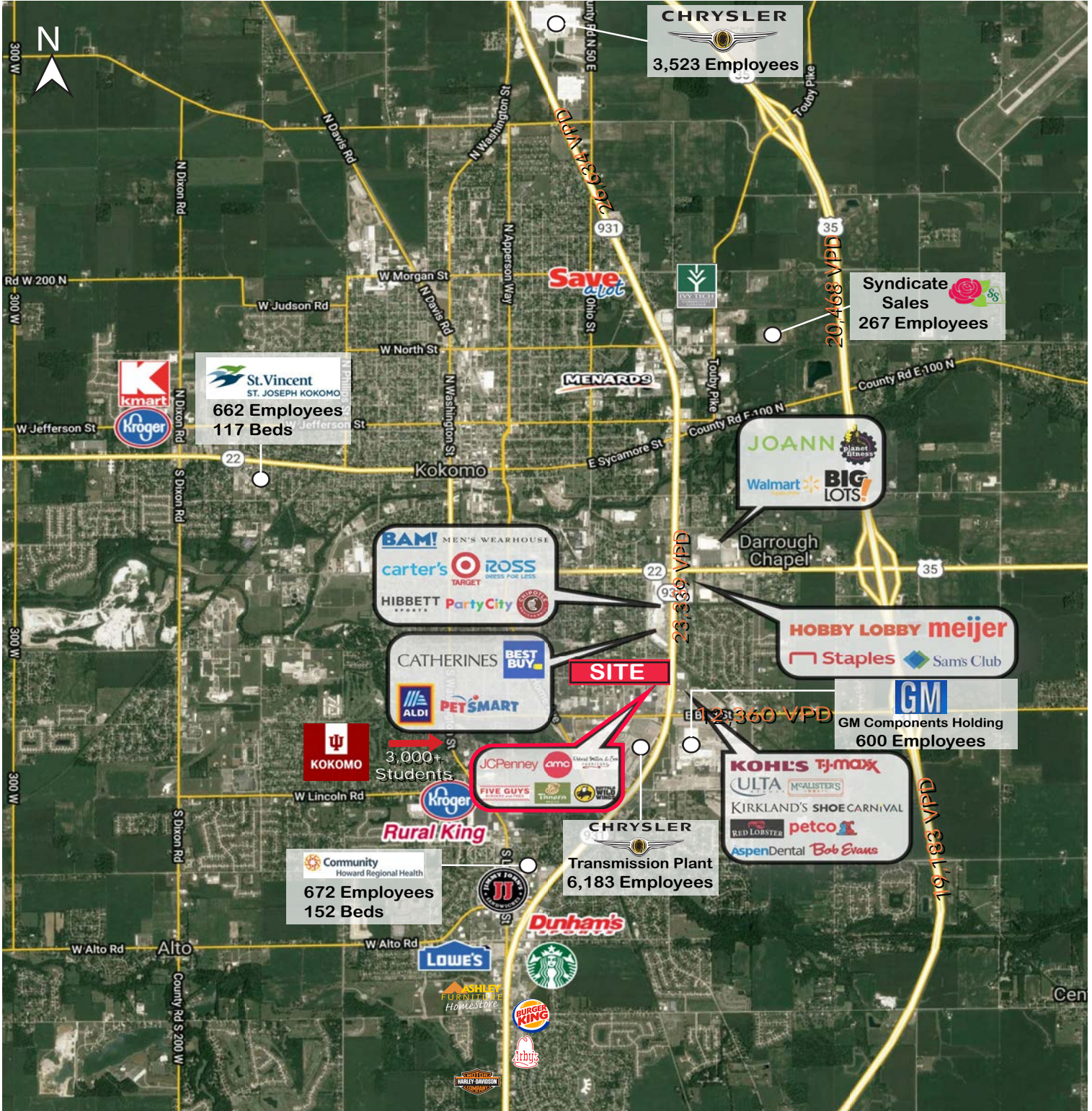
# KOKOMO TOWN CENTER

1700 East Boulevard Street, Kokomo, IN 46902

Project Overview

Site Plan

Aerial (Market)



Information within this brochure has been obtained from sources believed reliable, but we make no representations or warranties, expressed or implied, as to the accuracy of the information. Prospective tenant and tenant representatives must verify the information and bears all risk for any inaccuracies as it relates to property and market information.

**FOR MORE INFORMATION  
PLEASE CONTACT:**

**Patricia Tesluk**  
T: 317-789-8181  
E: PTesluk@ccim.net

