

Fishers Crossing Shoppes

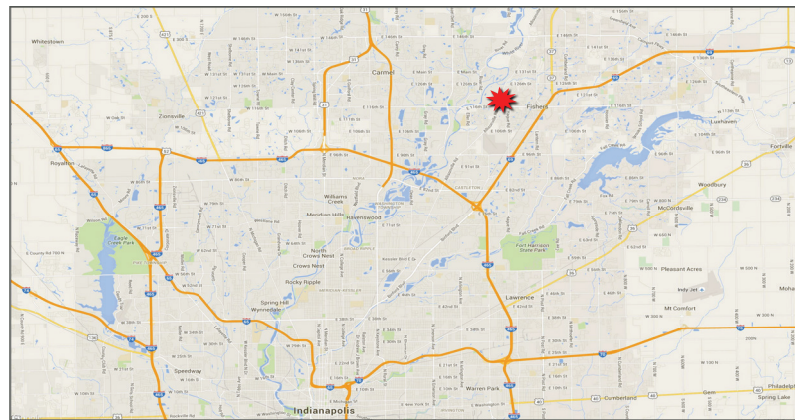
100% Occupied

11840 Allisonville Road, Fishers, IN 46038



Property Highlights:

- Located at the northwest quadrant of Allisonville Rd & 116th St
- Excellent visibility in a dense and affluent demographic area
- Abundant daytime population and strong traffic counts
- Join McNamara Florist, Mark Pi's, and Dairy Queen
- GLA: 23,200 SF



| Demographics | 1 mile | 3 mile | 5 mile |
|----------------------|----------|-----------|-----------|
| Estimated Population | 8,332 | 59,585 | 161,106 |
| Est. Avg. HH Income | \$88,465 | \$103,773 | \$100,787 |



For more information contact:
Paul Rogozinski
317-789-8164
progozinski@veritasrealty.com

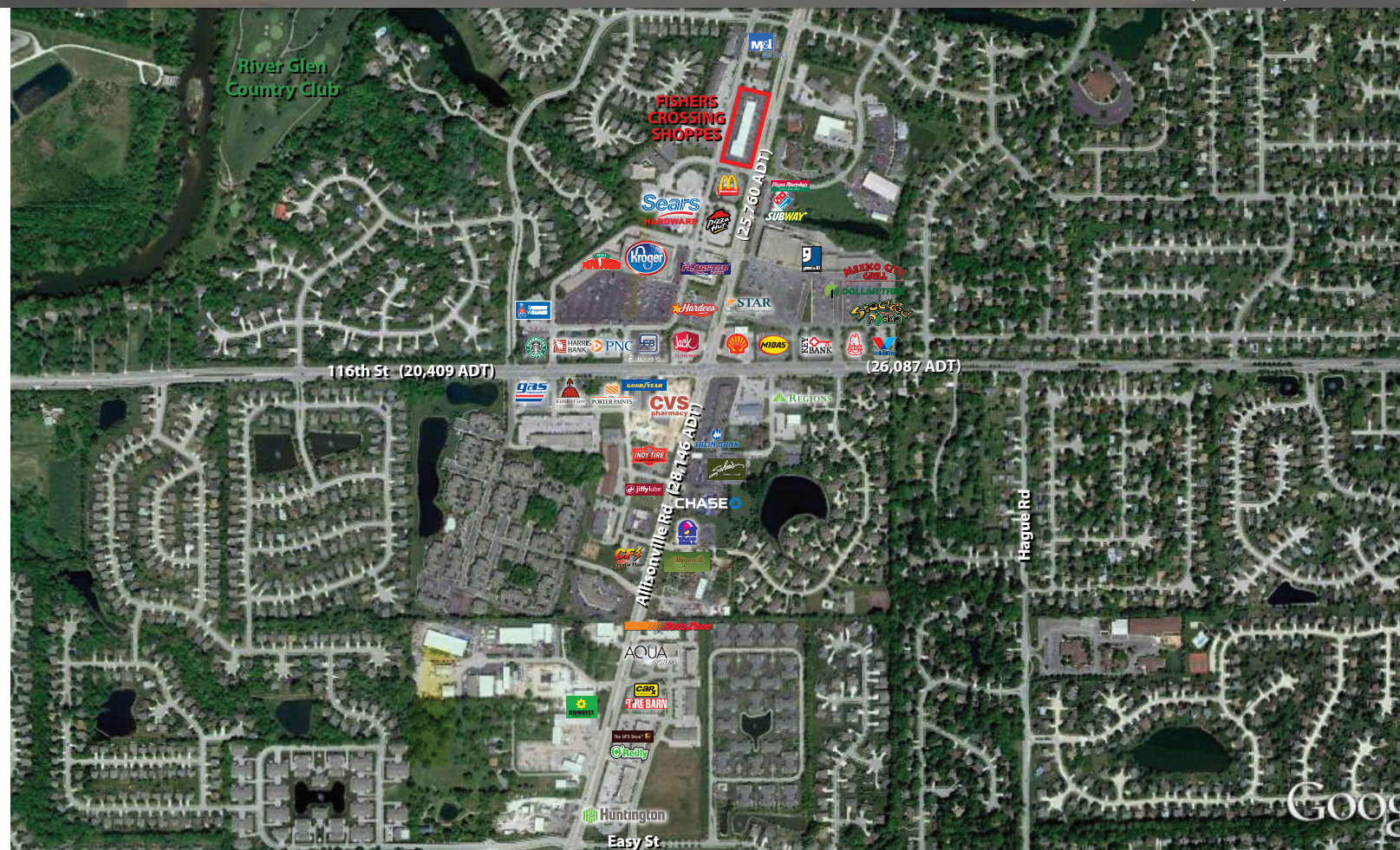
Andrew Demaree
317-472-1800
ademaree@veritasrealty.com



Fishers Crossing Shoppes

100% Occupied

11840 Allisonville Road, Fishers, IN 46038



**VERITAS
REALTY**

For more information contact:
Paul Rogozinski
 317-789-8164
 progozinski@veritasrealty.com

Andrew Demaree
 317-472-1800
 ademaree@veritasrealty.com



6440 Westfield Blvd., Indianapolis, IN 46220 | ph. (317) 472-1800 - fax (317) 472-1802 | VeritasRealty.com

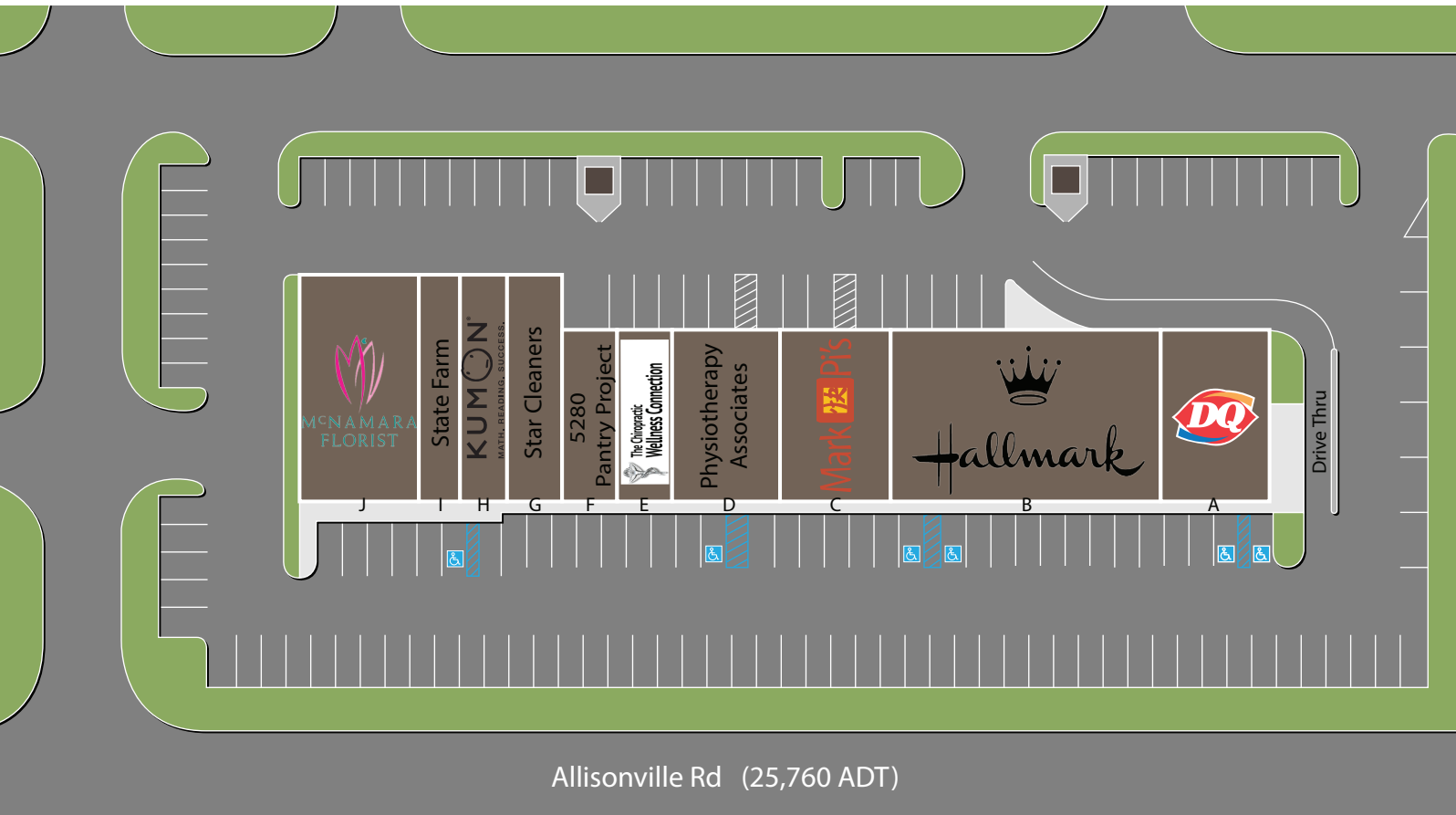
Fishers Crossing Shoppes

100% Occupied

11840 Allisonville Road, Fishers, IN 46038

Site Plan

| Suite | Tenant | Size |
|------------------|---|------------------|
| A | Dairy Queen | 2,400 SF |
| B | Hallmark | 2,400-6,000 SF |
| C | Mark Pi's | 2,400 SF |
| D | Physiotherapy Associates | 2,400 SF |
| E | The Chiropractic Wellness Connection of Fishers | 1,200 SF |
| F | 5280 Pantry Project | 1,200 SF |
| G | Star Cleaners | 1,600 SF |
| H | Kumon | 1,415 SF |
| I | State Farm | 1,385 SF |
| J | McNamara Florist | 3,200 SF |
| Total GLA | | 23,200 SF |



For more information contact:

Paul Rogozinski

317-789-8164

progozinski@veritasrealty.com

Andrew Demaree

317-472-1800

ademaree@veritasrealty.com

