

# Fishers Crossing Shoppes

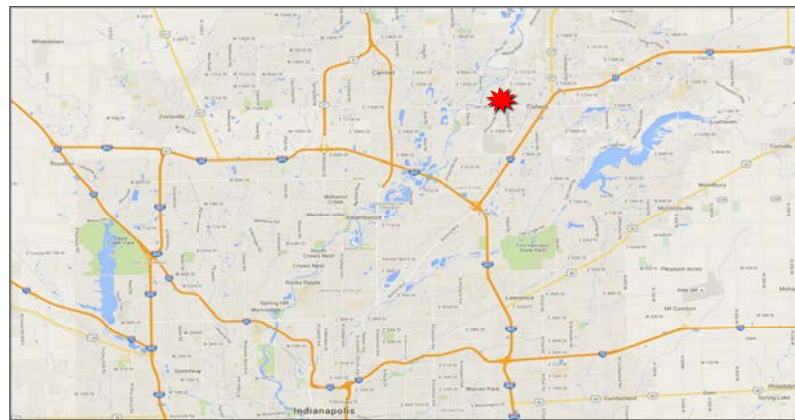
## 1,200 SF AVAILABLE

11840 Allisonville Road, Fishers, IN 46038



### Property Highlights:

- Located at the northwest quadrant of Allisonville Rd & 116th St
- Excellent visibility in a dense and affluent demographic area
- Abundant daytime population and strong traffic counts
- Join McNamara Florist, Mark Pi's, and Dairy Queen
- GLA: 23,200 SF



Demographics	1 mile	3 mile	5 mile
Estimated Population	8,332	59,585	161,106
Est. Avg. HH Income	\$88,465	\$103,773	\$100,787



For more information contact:  
**Paul Rogozinski**  
317-789-8164  
progozinski@veritasrealty.com

**Kyle Hughes**  
317-472-1800  
khughes@veritasrealty.com

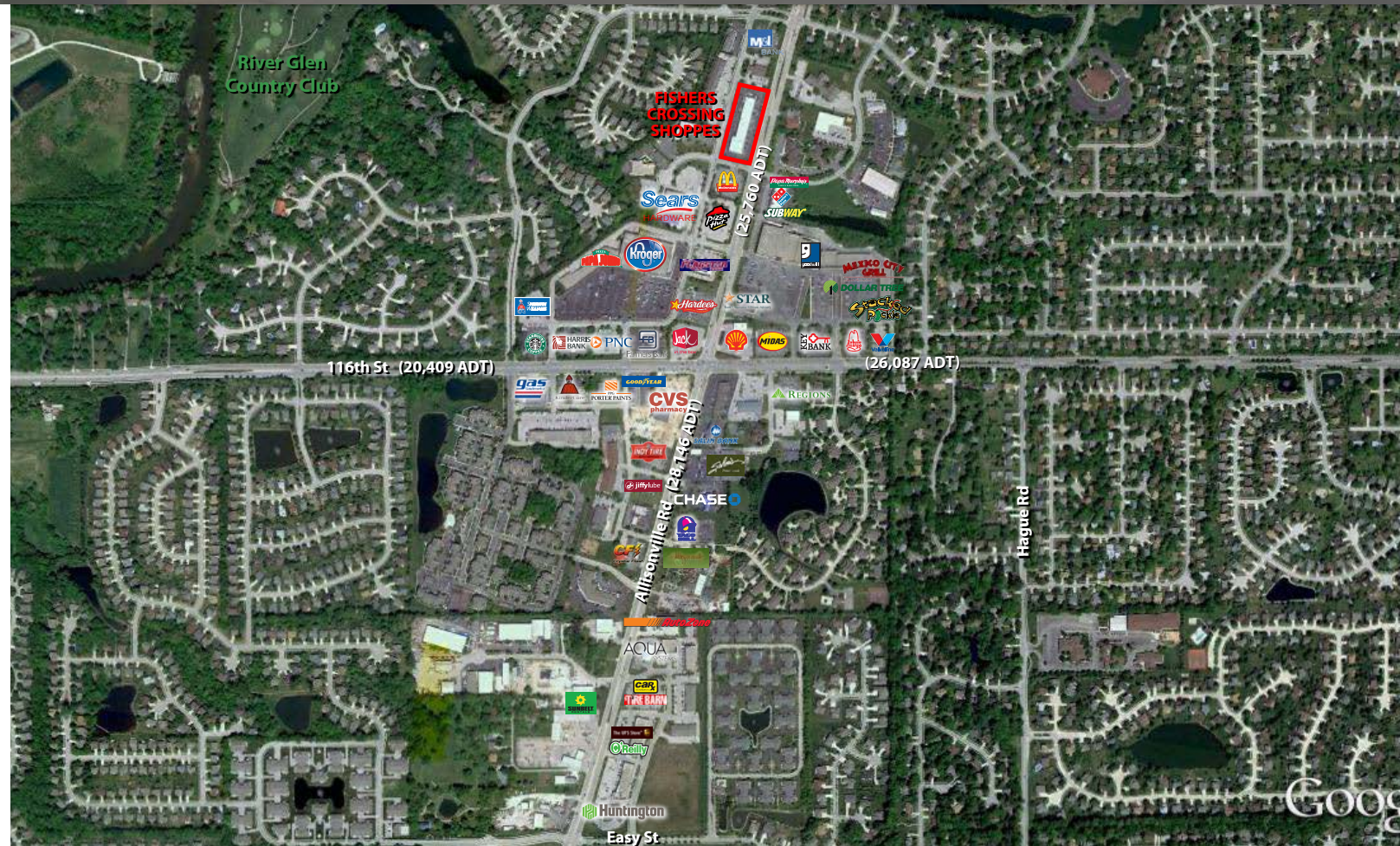




# Fishers Crossing Shoppes

1,200 SF AVAILABLE

11840 Allisonville Road, Fishers, IN 46038



**VERITAS  
REALTY**

For more information contact:  
**Paul Rogozinski**  
317-789-8164  
progozinski@veritasrealty.com

**Kyle Hughes**  
317-472-1800  
khughes@veritasrealty.com



6440 Westfield Blvd., Indianapolis, IN 46220 | ph. (317) 472-1800 - fax (317) 472-1802 | VeritasRealty.com



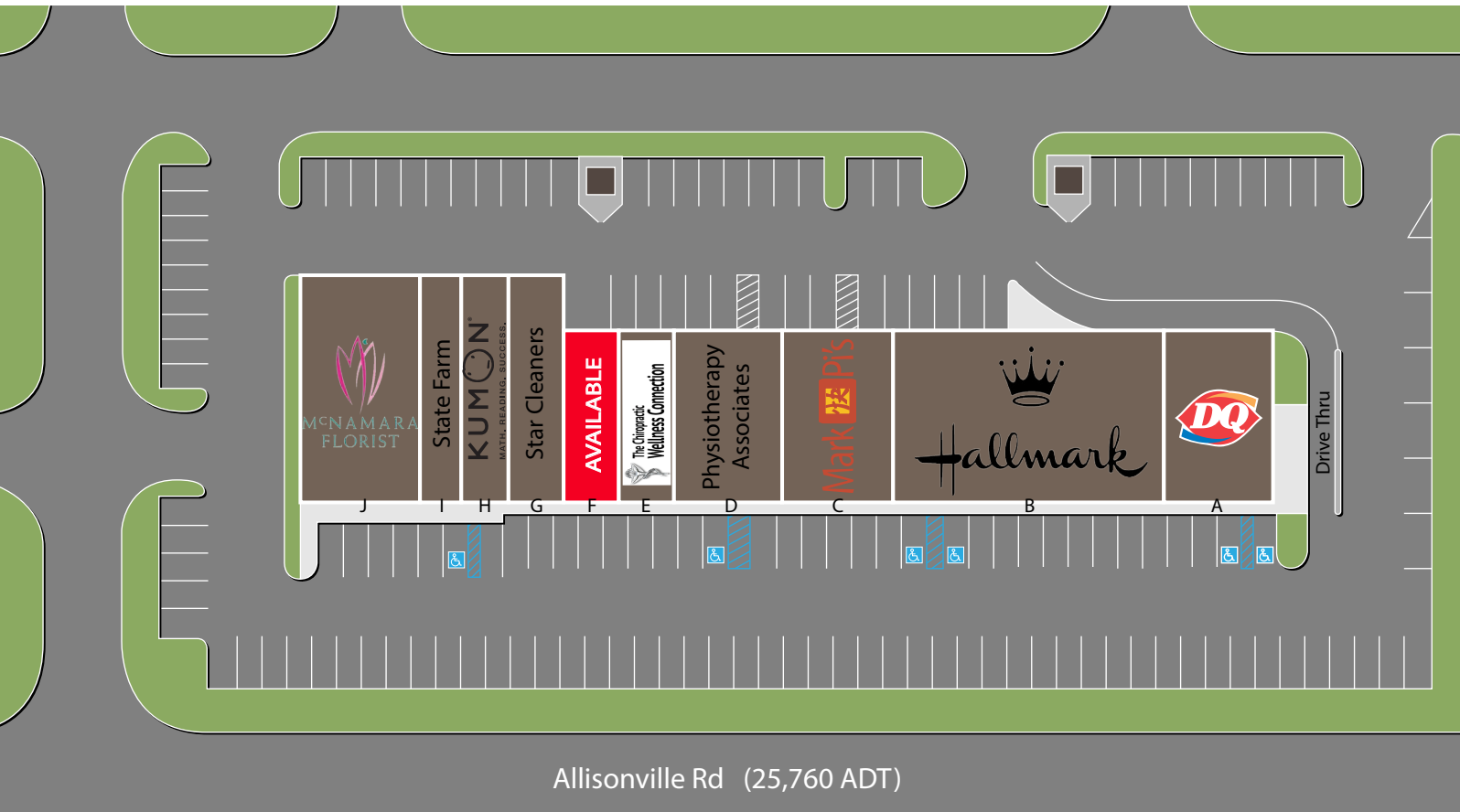
# Fishers Crossing Shoppes

## 1,200 SF AVAILABLE

11840 Allisonville Road, Fishers, IN 46038

### Site Plan

Suite	Tenant	Size
A	Dairy Queen	2,400 SF
B	Hallmark	2,400-6,000 SF
C	Mark Pi's	2,400 SF
D	Physiotherapy Associates	2,400 SF
E	The Chiropractic Wellness Connection of Fishers	1,200 SF
F	<b>AVAILABLE</b>	<b>1,200 SF</b>
G	Star Cleaners	1,600 SF
H	Kumon	1,415 SF
I	State Farm	1,385 SF
J	McNamara Florist	3,200 SF
<b>Total GLA</b>		<b>23,200 SF</b>



For more information contact:

**Paul Rogozinski**

317-789-8164

progozinski@veritasrealty.com

**Kyle Hughes**

317-472-1800

khughes@veritasrealty.com



**VERITAS  
REALTY**



6440 Westfield Blvd., Indianapolis, IN 46220 | ph. (317) 472-1800 - fax (317) 472-1802 | VeritasRealty.com