

Fishers Crossing Shoppes

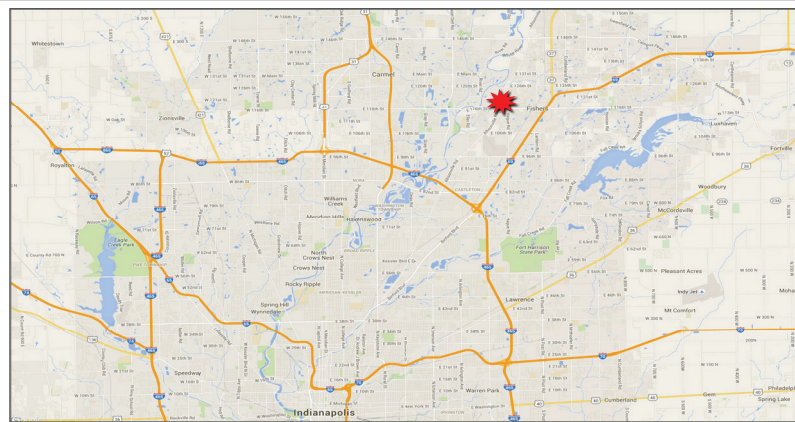
2,400 SF AVAILABLE

11840 Allisonville Road, Fishers, IN 46038



Property Highlights:

- Located at the northwest quadrant of Allisonville Rd & 116th St
- Excellent visibility in a dense and affluent demographic area
- Abundant daytime population and strong traffic counts
- Join McNamara Florist, Mark Pi's, and Dairy Queen
- GLA: 23,200 SF



Demographics	1 mile	3 mile	5 mile
Estimated Population	8,332	59,585	161,106
Est. Avg. HH Income	\$88,465	\$103,773	\$100,787



For more information contact:
Paul Rogozinski
 317-789-8164
progozinski@veritasrealty.com

Kyle Hughes
 317-472-1800
khughes@veritasrealty.com



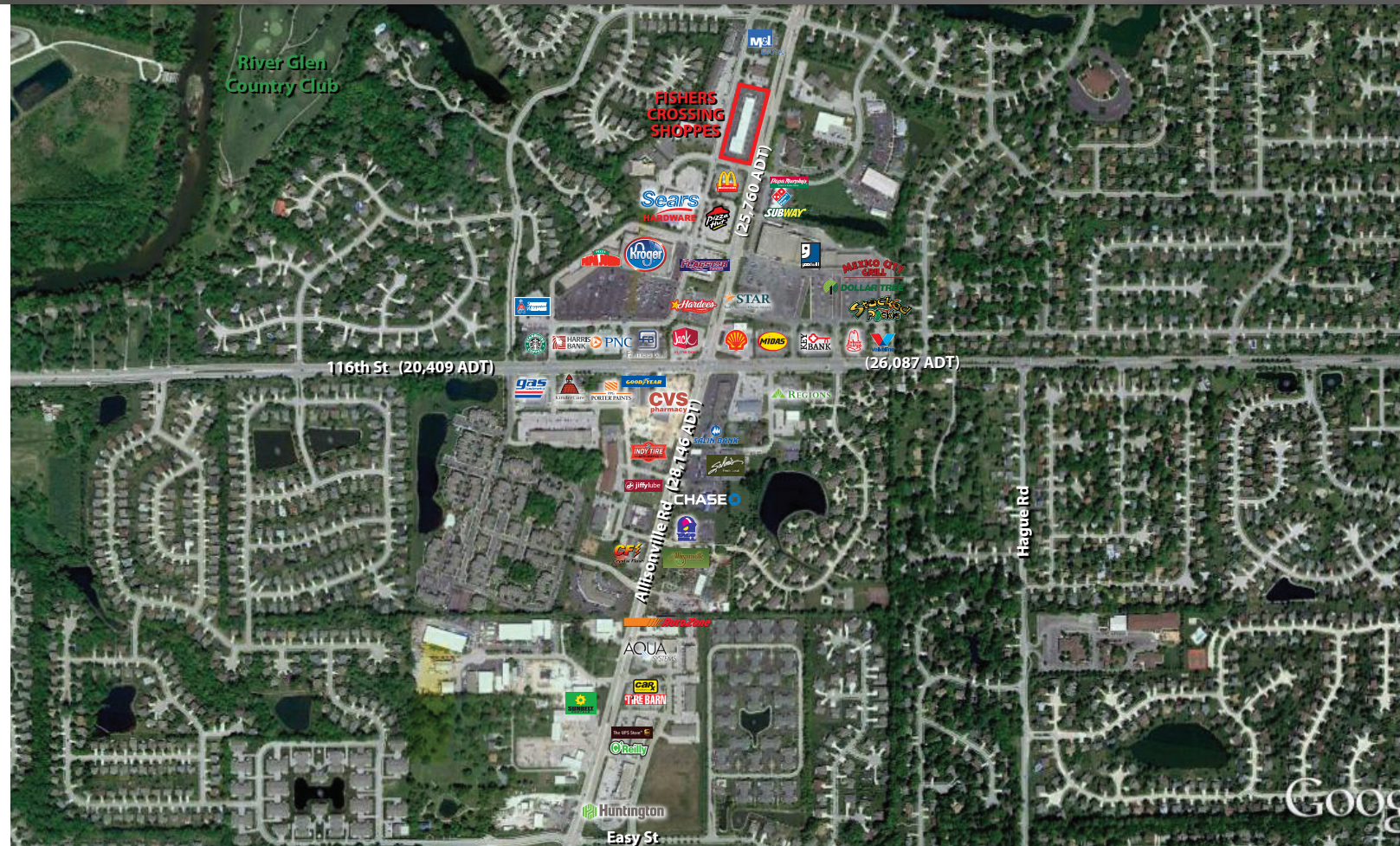
930 E 66th St - Indianapolis, IN 46220 - ph. (317) 472-1800 - fax (317) 472-1802 - www.veritasrealty.com

**VERITAS
 REALTY**

Fishers Crossing Shoppes

2,400 SF AVAILABLE

11840 Allisonville Road, Fishers, IN 46038



**VERITAS
REALTY**

For more information contact:
Paul Rogozinski
 317-789-8164
 progozinski@veritasrealty.com

Kyle Hughes
 317-472-1800
 khughes@veritasrealty.com



930 E 66th St - Indianapolis, IN 46220 - ph. (317) 472-1800 - fax (317) 472-1802 - www.veritasrealty.com

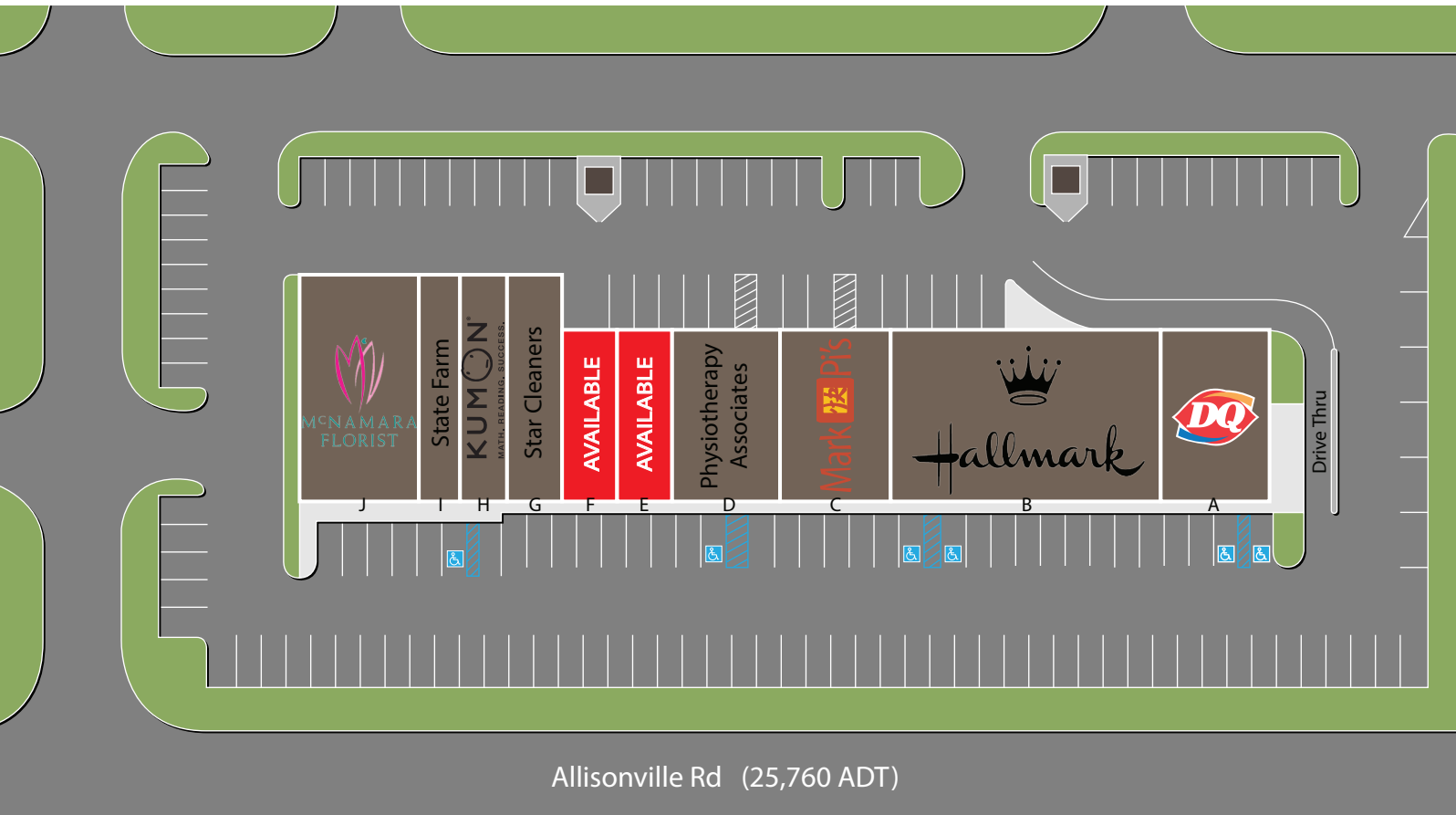
Fishers Crossing Shoppes

2,400 SF AVAILABLE

11840 Allisonville Road, Fishers, IN 46038

Site Plan

Suite	Tenant	Size
A	Dairy Queen	2,400 SF
B	Hallmark	2,400-6,000 SF
C	Mark Pi's	2,400 SF
D	Physiotherapy Associates	2,400 SF
E	AVAILABLE	1,200 SF
F	AVAILABLE	1,200 SF
G	Star Cleaners	1,600 SF
H	Kumon	1,415 SF
I	State Farm	1,385 SF
J	McNamara Florist	3,200 SF
Total GLA		23,200 SF



VERITAS REALTY

For more information contact:

Paul Rogozinski

317-789-8164

progozinski@veritasrealty.com

Kyle Hughes

317-472-1800

khughes@veritasrealty.com



930 E 66th St - Indianapolis, IN 46220 - ph. (317) 472-1800 - fax (317) 472-1802 - www.veritasrealty.com