

FISHERS CROSSING SHOPPES

FULLY LEASED




VERITAS
REALTY

11840 Allisonville Rd., Fishers, IN 46038



PROPERTY HIGHLIGHTS:

- Fully Leased
- Located at the Northwest quadrant of Allisonville Rd & 116th St
- Excellent visibility in a densely populated and affluent demographic area
- Abundant parking and strong daytime population
- Join McNamara Florist, Mark Pi's and Dairy Queen
- GLA: 23,200 SF

DEMOGRAPHICS	 1 MILE	 3 MILE	 5 MILE
Population:	8,787	63,276	175,613
Households:	3,664	25,157	69,472
Daytime Pop:	5,966	52,656	147,251
Avg. HH Income:	\$111,804	\$127,388	\$124,372

CONTACT: **Paul Rogozinski**

T: 317-789-8164

E: Progozinski@VeritasRealty.com

Andrew Demaree

T: 317-472-1800

E: Ademaree@VeritasRealty.com

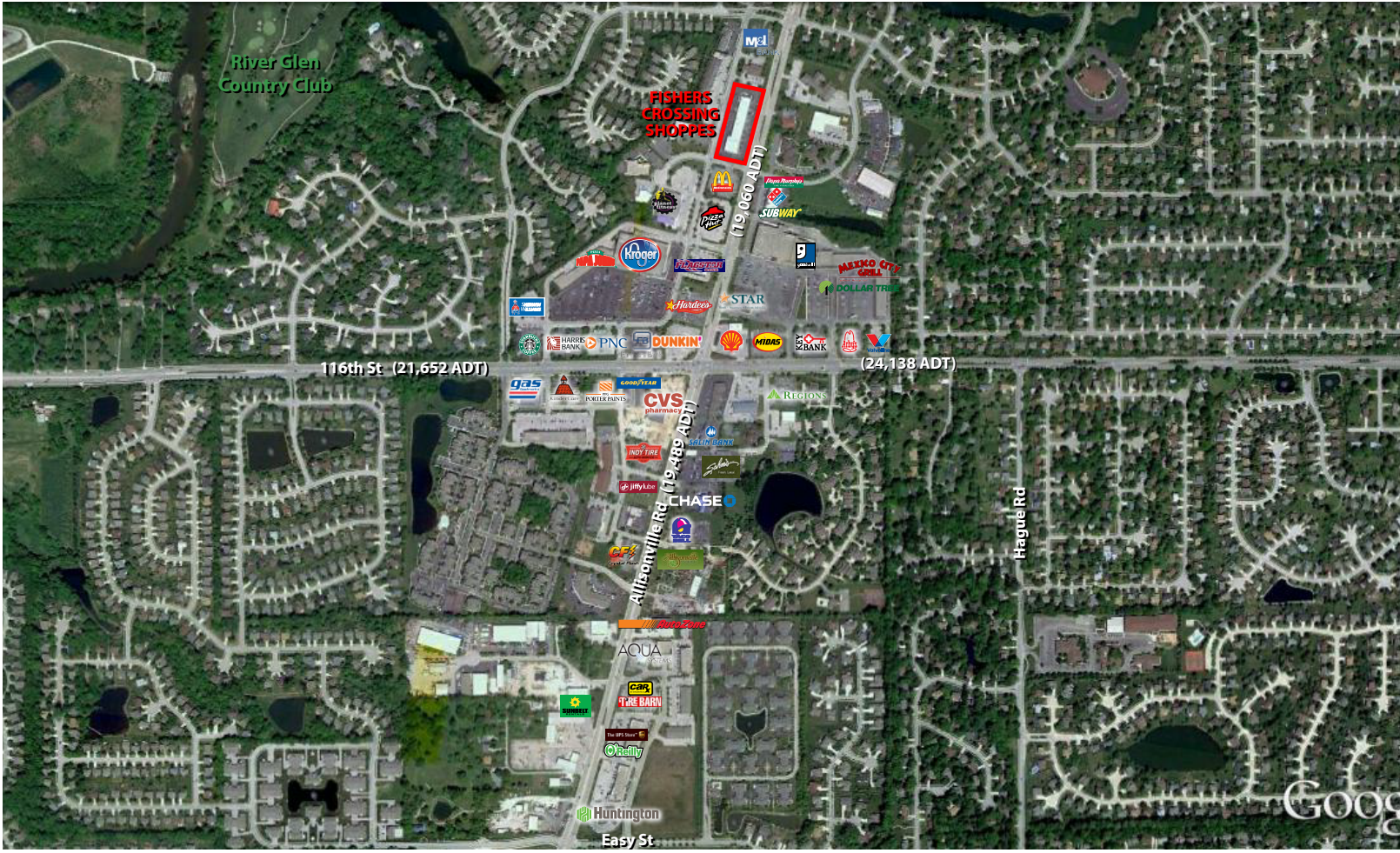
100%
LEASED

www.VeritasRealty.com

FISHERS CROSSING SHOPPES

FULLY LEASED

AERIAL
SITE



FISHERS CROSSING SHOPPES

FULLY LEASED

SITE
PLAN

Site Plan

Suite	Tenant	Size
A	Dairy Queen	2,400 SF
B	Hallmark	2,400-6,000 SF
C	Mark Pl's	2,400 SF
D	Physiotherapy Associates	2,400 SF
E	The Chiropractic Wellness Connection of Fishers	1,200 SF
F	The Food Florist	1,200 SF
G	Star Cleaners	1,600 SF
H	Kumon	1,415 SF
I	State Farm	1,385 SF
J	McNamara Florist	3,200 SF
Total GLA		23,200 SF



CHAINLINKS
RETAIL ADVISORS

Information within this brochure has been obtained from sources believed reliable, but we make no representations or warranties, expressed or implied, as to the accuracy of the information. Prospective tenant and tenant representatives must verify the information and bears all risk for any inaccuracies as it relates to property and market information.

CONTACT:

Paul Rogozinski

T: 317-789-8164

E: Progozinski@VeritasRealty.com

Andrew Demaree

T: 317-472-1800

E: Ademaree@VeritasRealty.com

VERITAS
REALTY

www.VeritasRealty.com