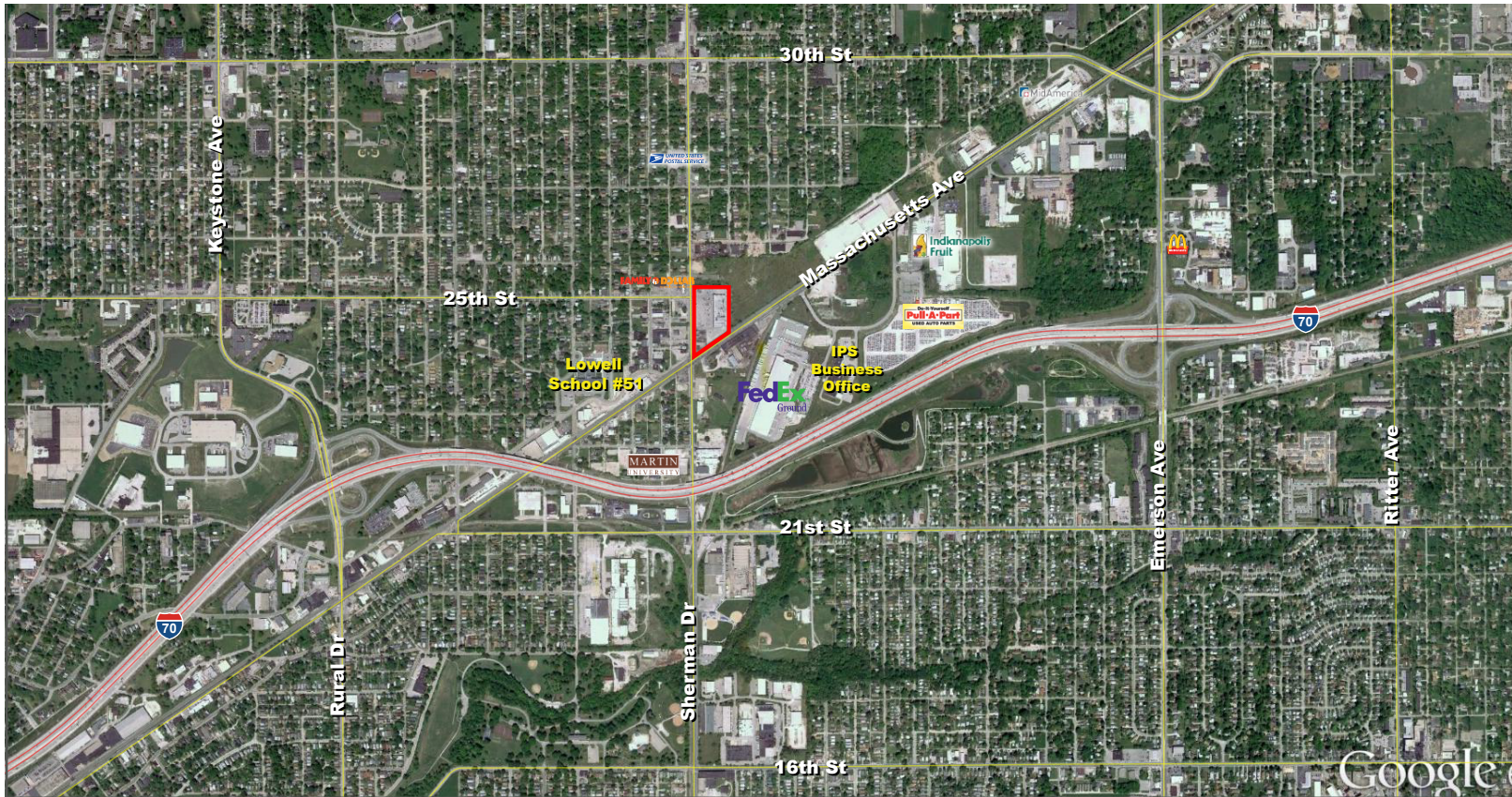


# Retail Space Available For Lease

## Brightwood Plaza

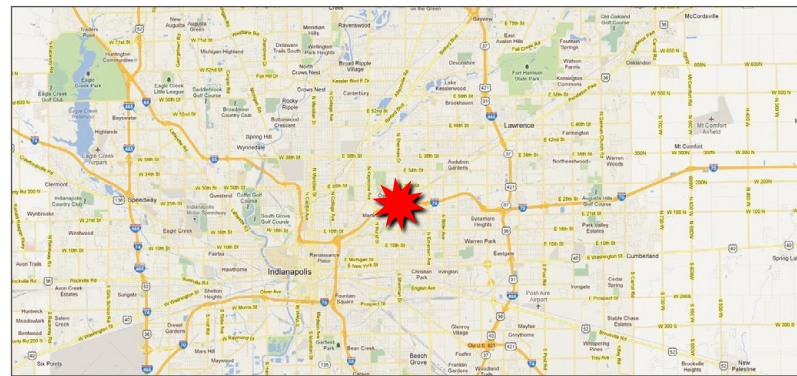
5,600 - 7,500 SF

2435 N Sherman Dr, Indianapolis, IN 46218



### Property Highlights:

- Safeway Grocery anchored center located in a densely populated area of Indianapolis
- 5,600 - 7,500 SF retail space for lease
- Highly visible location situated at the NEC of N. Sherman Dr. and Massachusetts Ave
- Co-tenants include PNC Bank and Safeway Grocery



Demographics	1 mile	3 mile	5 mile
Estimated Population	15,194	114,125	256,545
Est. Avg. HH Income	\$42,307	\$56,940	\$61,214
Traffic Counts			
Sherman Dr	15,321 ADT		
Massachusetts Ave	10,494 ADT		

FOR MORE INFORMATION Paul Rogozinski

PLEASE CONTACT: T: 317-789-8164

E: PRogozinski@VeritasRealty.com



A MEMBER OF  
**CHAINLINKS**  
RETAIL ADVISORS

# Retail Space Available For Lease

## Brightwood Plaza

5,600 - 7,500 SF

2435 N Sherman Dr, Indianapolis, IN 46218

### Site Plan

Suite	Tenant	Size
1/2	Safeway	20,450 SF
3	Metro PCS	700 SF
4/5/6	AVAILABLE	5,600 SF
7	Queen Thingz Collections	800 SF
8	Luxe Hair Extensions	800 SF
9a	Safeway	3,400 SF
9	AVAILABLE	7,500 SF
10	PNC	1,650 SF
<b>Total GLA</b>		<b>40,900 SF</b>



Information within this brochure has been obtained from sources believed reliable, but we make no representations or warranties, expressed or implied, as to the accuracy of the information. Prospective tenant and tenant representatives must verify the information and bears all risk for any inaccuracies as it relates to property and market information.

**FOR MORE INFORMATION** Paul Rogozinski  
**PLEASE CONTACT:** T: 317-789-8164  
 E: PRogozinski@VeritasRealty.com

