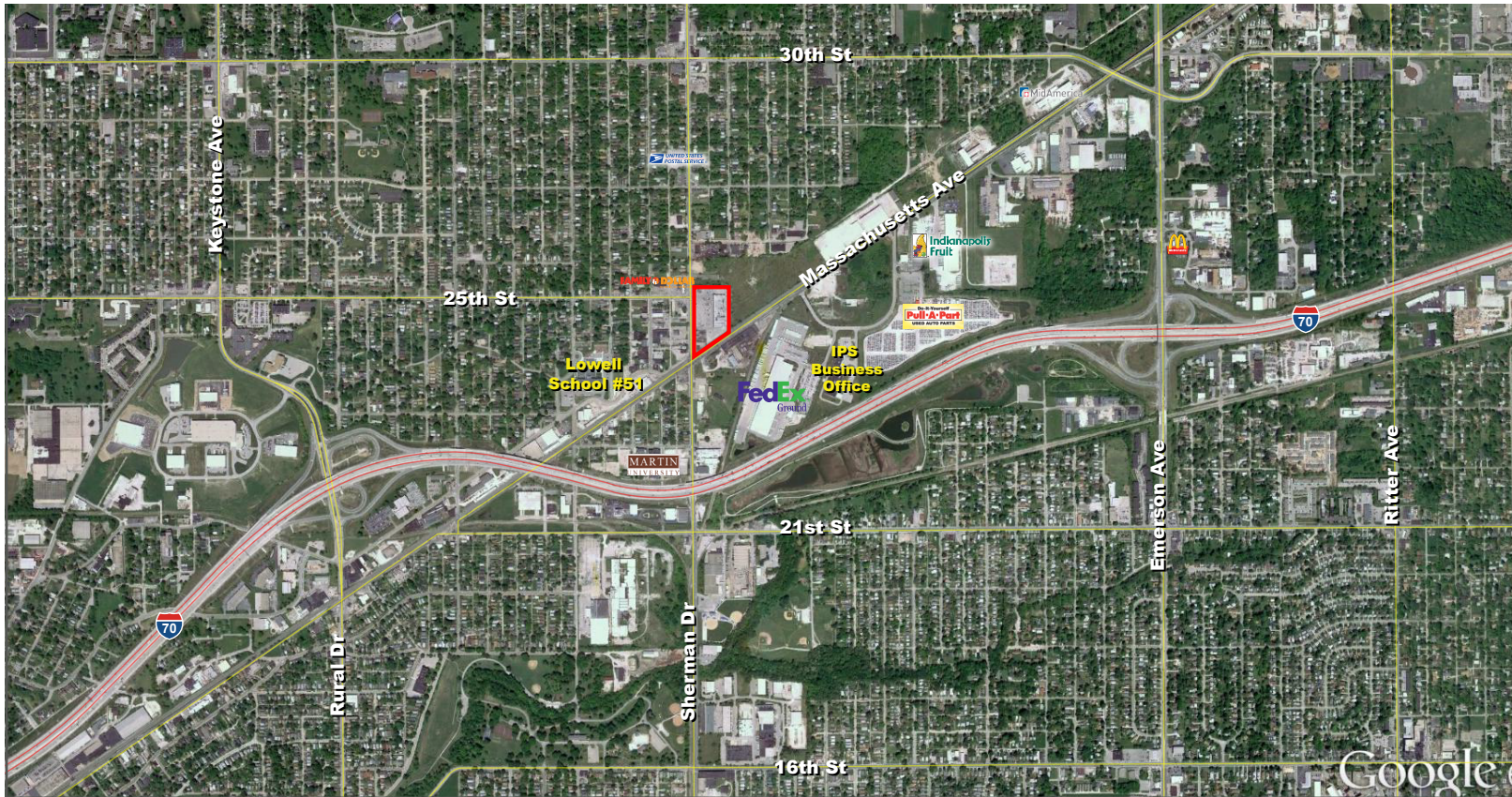


Retail Space Available For Lease

Brightwood Plaza

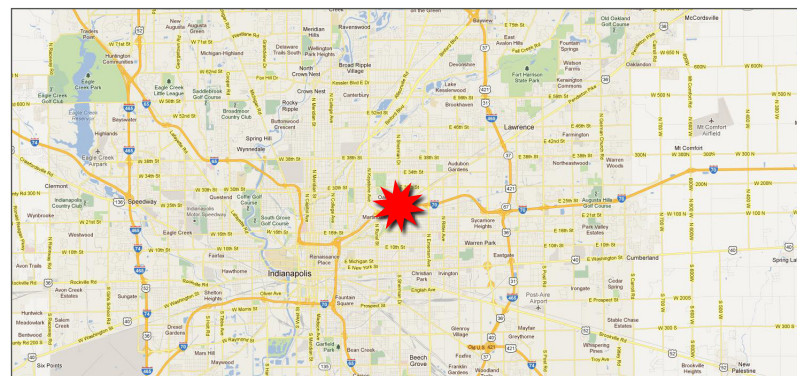
700 - 7,500 SF

2435 N Sherman Dr, Indianapolis, IN 46218



Property Highlights:

- Safeway Grocery anchored center located in a densely populated area of Indianapolis
- 3,400 SF available warehouse space & 7,500 SF retail space for lease
- Highly visible location situated at the NEC of N. Sherman Dr. and Massachusetts Ave
- Co-tenants include PNC Bank and Safeway Grocery



| Demographics | 1 mile | 3 mile | 5 mile |
|----------------------|------------|----------|----------|
| Estimated Population | 8,117 | 105,259 | 262,001 |
| Est. Avg. HH Income | \$36,508 | \$50,502 | \$61,649 |
| Traffic Counts | | | |
| Sherman Dr | 15,321 ADT | | |
| Massachusetts Ave | 10,494 ADT | | |

FOR MORE INFORMATION
PLEASE CONTACT:

Paul Rogozinski
T: 317-789-8164
E: PRogozinski@VeritasRealty.com



A MEMBER OF
CHAINLINKS
RETAIL ADVISORS

Retail Space Available For Lease

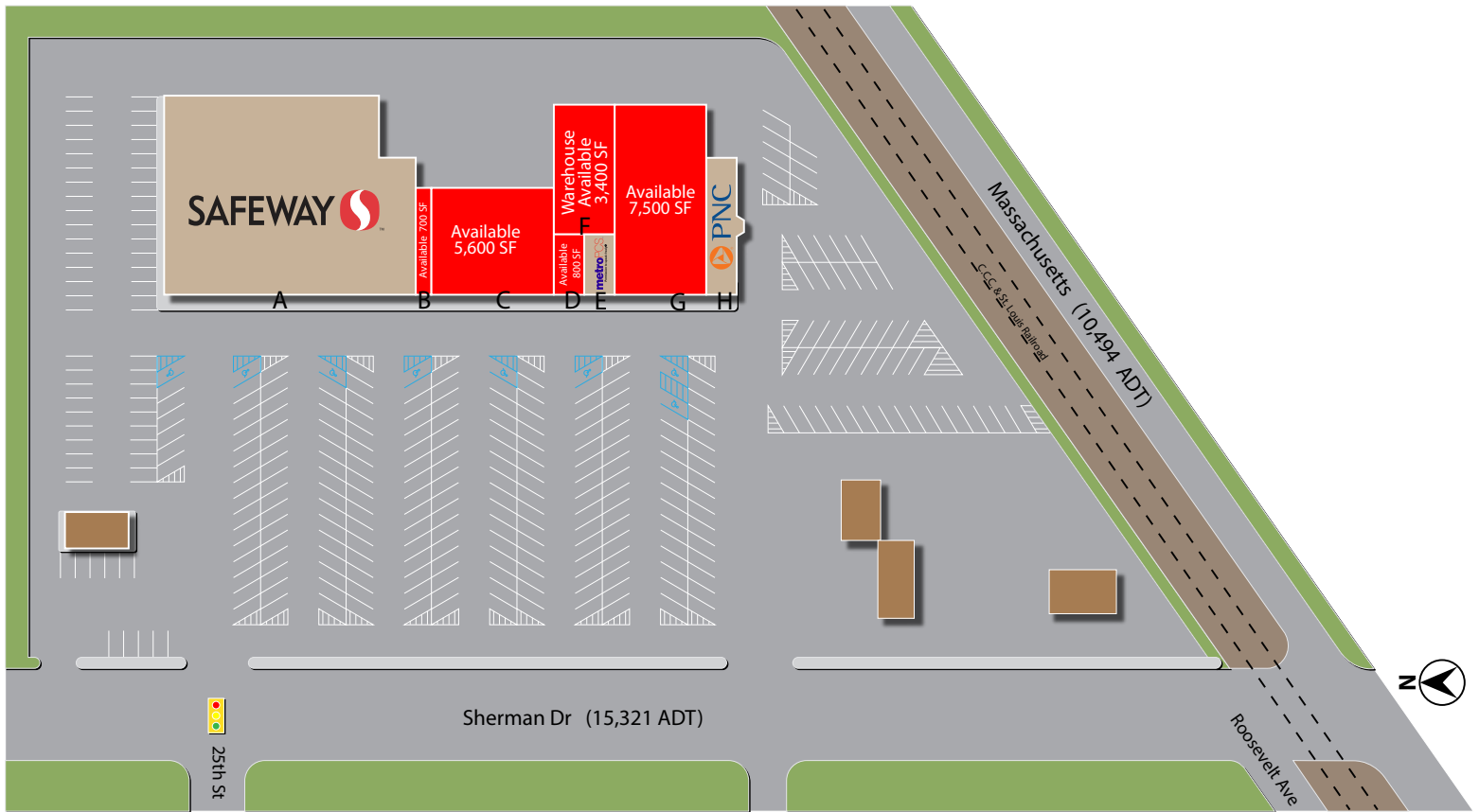
Brightwood Plaza

700 - 7,500 SF

2435 N Sherman Dr, Indianapolis, IN 46218

Site Plan

| Suite | Tenant | Size |
|------------------|-----------|------------------|
| A | Safeway | 20,450 SF |
| B | AVAILABLE | 700 SF |
| C | AVAILABLE | 5,600 SF |
| D | AVAILABLE | 800 SF |
| E | Metro PCS | 1,600 SF |
| F | WAREHOUSE | 3,400 SF |
| G | AVAILABLE | 7,500 SF |
| H | PNC | 1,650 SF |
| Total GLA | | 41,700 SF |



Information within this brochure has been obtained from sources believed reliable, but we make no representations or warranties, expressed or implied, as to the accuracy of the information. Prospective tenant and tenant representatives must verify the information and bears all risk for any inaccuracies as it relates to property and market information.

FOR MORE INFORMATION Paul Rogozinski
PLEASE CONTACT: T: 317-789-8164
 E: PRogozinski@VeritasRealty.com

