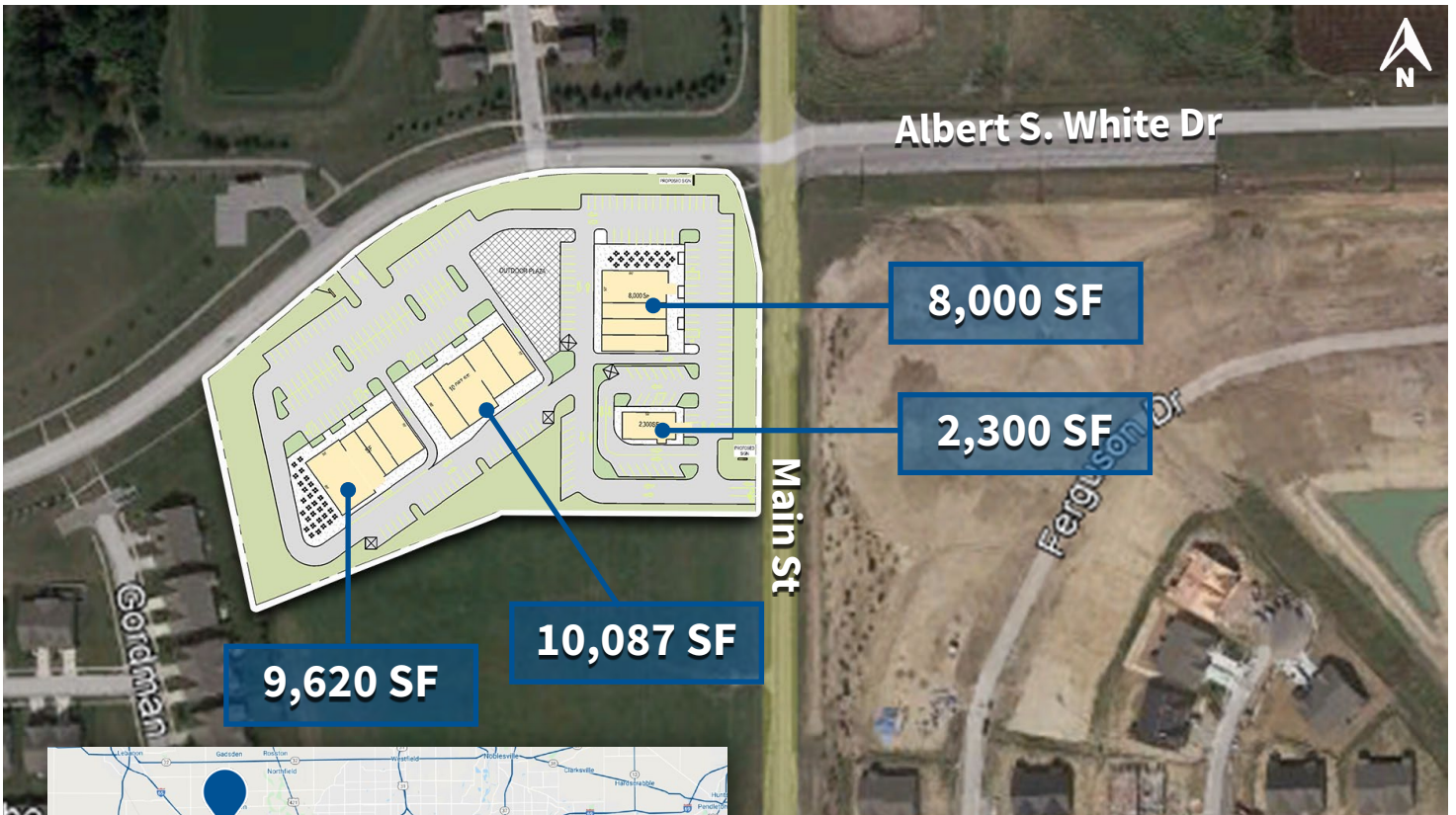


SHOPPES AT WALKER FARMS

NEW RETAIL & MEDICAL DEVELOPMENT | LATE 2022

VERITAS
REALTY

4002 S. Main Street, Whitestown, IN 46038



PROPERTY HIGHLIGHTS:

- New construction retail, medical & restaurant development coming late 2022
- Perfectly situated at the hard corner (SWC) of Main St & Albert S. White Dr. in Whitestown
- Strong neighborhood location in underserved Whitestown trade-area
- Drive-thru and large patio opportunities available
- Located on the Ronald Reagan Parkway Expansion connecting 146th Street to SR-267
- Whitestown has been named the fastest growing municipality in the state for 8+ years

DEMOGRAPHICS



3 MILE



5 MILE



15 Min Drive-time

Population:	16,284	36,318	50,472
Avg. HH Income:	\$143,842	\$161,869	\$166,433
Pop Growth (2010-21):	+8%	+4.5%	+3.9%
Households:	5,742	12,899	18,002

CONTACT: **Andrew Demaree**
T: 317-472-1800
E: Ademaree@VeritasRealty.com

**FOR
LEASE**

www.VeritasRealty.com

SHOPPES AT WALKER FARMS

NEW RETAIL & MEDICAL DEVELOPMENT | LATE 2022

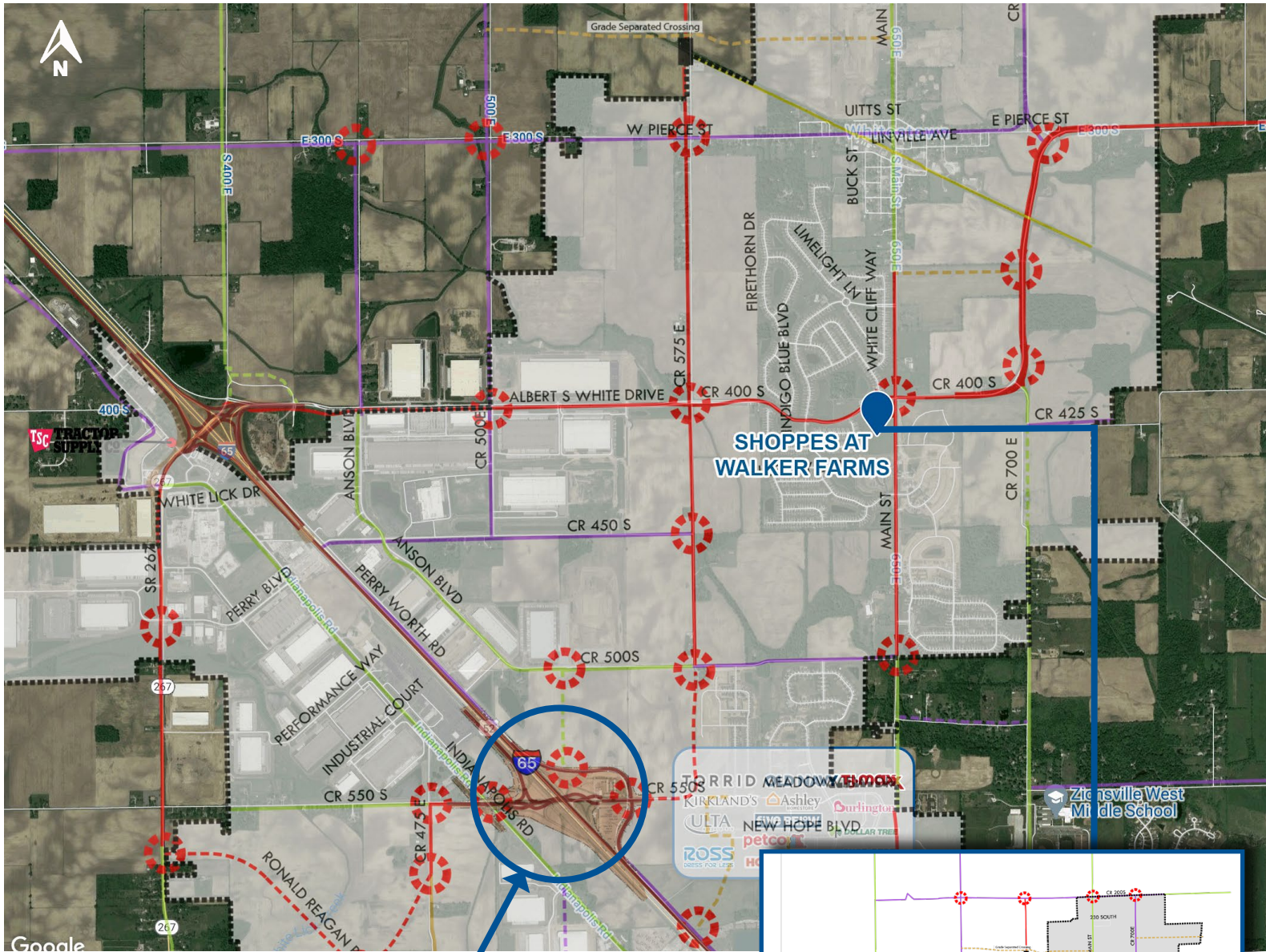
MARKET
AERIAL



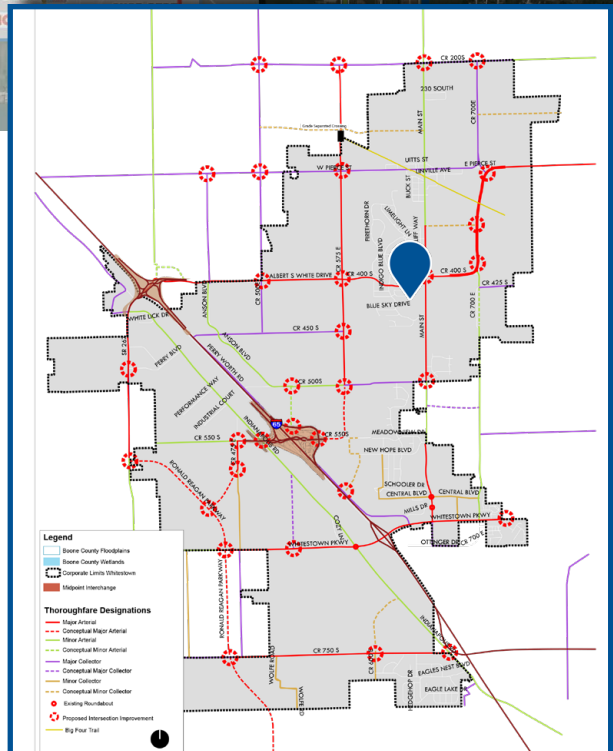
SHOPPES AT WALKER FARMS

NEW RETAIL & MEDICAL DEVELOPMENT | LATE 2022

TRAFFIC
AERIAL



CR 550 S Interchange Traffic Aerial - August 2022 Completion

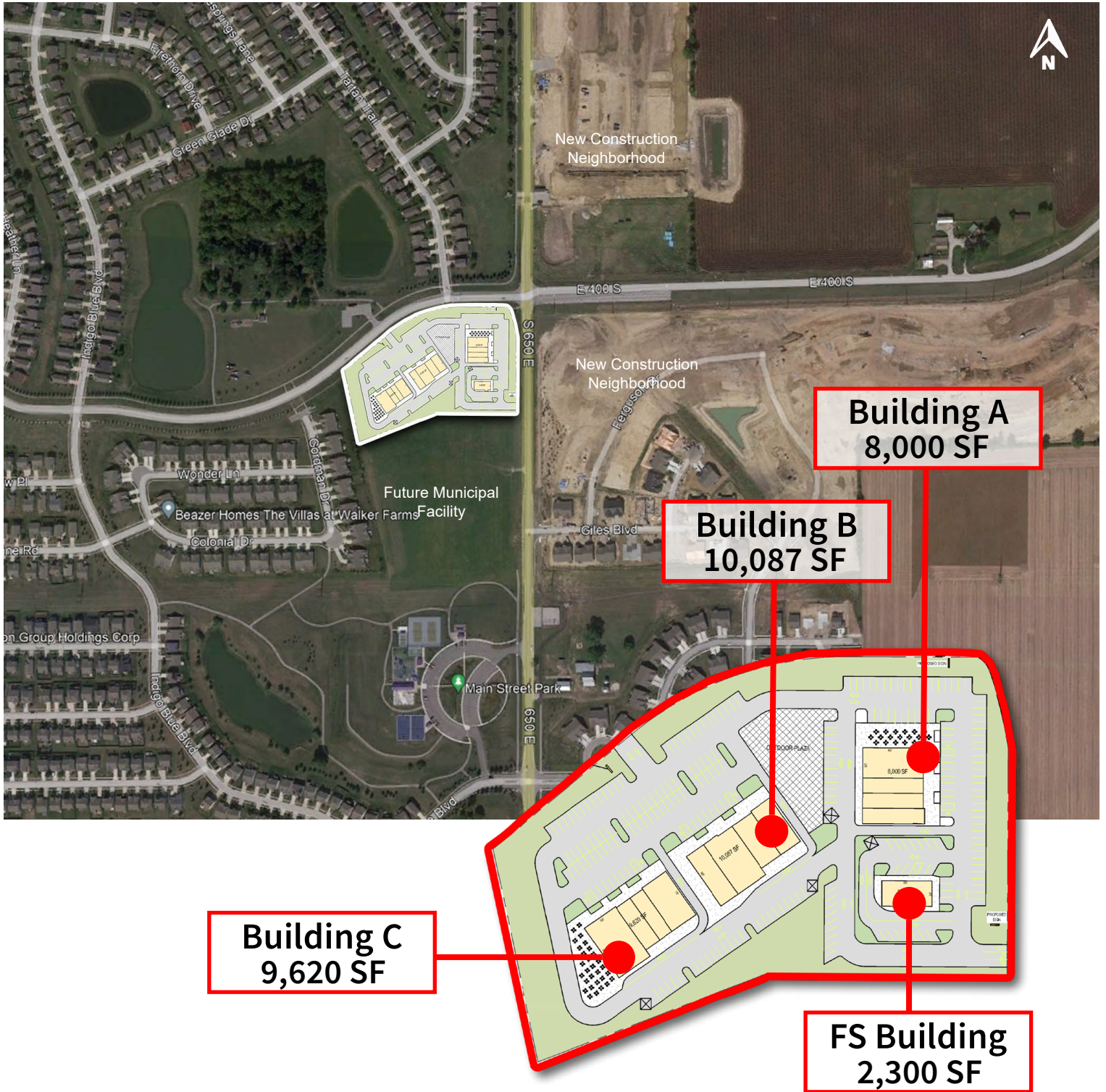


SHOPPES AT WALKER FARMS

NEW RETAIL & MEDICAL DEVELOPMENT | LATE 2022

SITE PLAN

4002 S. Main Street, Whitestown, IN 46038



Information within this brochure has been obtained from sources believed reliable, but we make no representations or warranties, expressed or implied, as to the accuracy of the information. Prospective tenant and tenant representatives must verify the information and bears all risk for any inaccuracies as it relates to property and market information.

CONTACT: **Andrew Demaree**
 T: 317-472-1800
 E: Ademaree@VeritasRealty.com

VERITAS
 REALTY
www.VeritasRealty.com